

PRC FLAR END SEC 24
 STA 1430+07.9, 28.0 RT
 STA 1430+15.2, 29.0 LT
 STA 1178+20.0, 123.0 RT

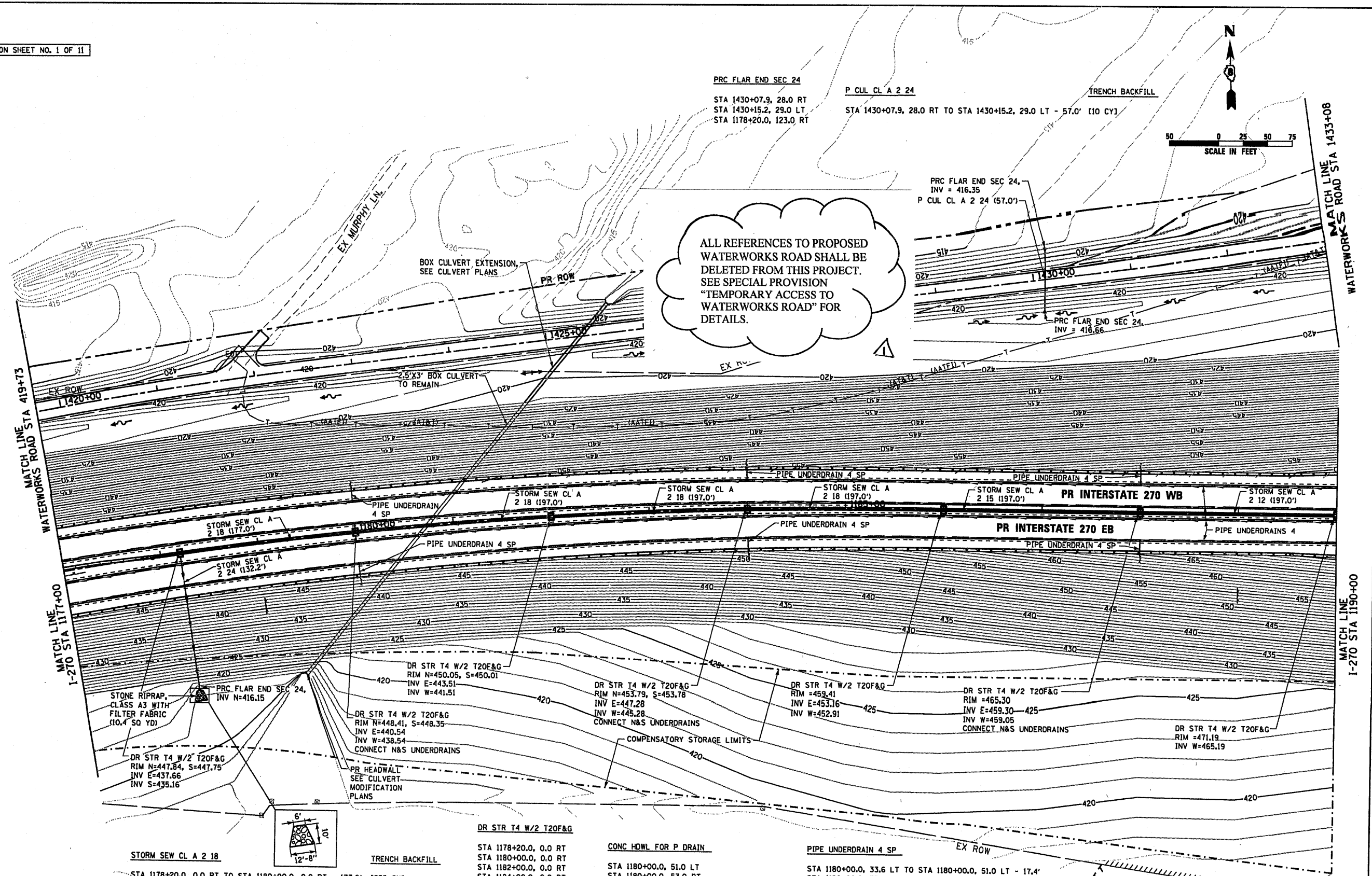
P CUL CL A 2 24
 STA 1430+07.9, 28.0 RT TO STA 1430+15.2, 29.0 LT - 57.0' [10 CY]

TRENCH BACKFILL

PRC FLAR END SEC 24,
 INV = 416.35
 P CUL CL A 2 24 (57.0')

PRC FLAR END SEC 24,
 INV = 418.66

ALL REFERENCES TO PROPOSED WATERWORKS ROAD SHALL BE DELETED FROM THIS PROJECT. SEE SPECIAL PROVISION "TEMPORARY ACCESS TO WATERWORKS ROAD" FOR DETAILS.



STONE RIPRAP CLASS A3 WITH FILTER FABRIC (10.4 SQ YD)
 DR STR T4 W/2 T20F&G
 RIM N=447.84, S=447.75
 INV E=437.66
 INV S=435.16

DR STR T4 W/2 T20F&G
 RIM N=448.41, S=448.35
 INV E=440.54
 INV W=438.54
 CONNECT N&S UNDERDRAINS

DR STR T4 W/2 T20F&G
 RIM N=453.79, S=453.78
 INV E=447.28
 INV W=445.28
 CONNECT N&S UNDERDRAINS

DR STR T4 W/2 T20F&G
 RIM =459.41
 INV E=453.16
 INV W=452.91

DR STR T4 W/2 T20F&G
 RIM =465.30
 INV E=459.30
 INV W=459.05
 CONNECT N&S UNDERDRAINS

DR STR T4 W/2 T20F&G
 RIM =471.19
 INV W=465.19

STORM SEW CL A 2 18
 STA 1178+20.0, 0.0 RT TO STA 1180+00.0, 0.0 RT - 177.0' [255 CY]
 STA 1180+00.0, 0.0 RT TO STA 1182+00.0, 0.0 RT - 197.0' [210 CY]
 STA 1182+00.0, 0.0 RT TO STA 1184+00.0, 0.0 RT - 197.0' [185 CY]
 STA 1184+00.0, 0.0 RT TO STA 1186+00.0, 0.0 RT - 197.0' [150 CY]

STORM SEW CL A 2 24
 STA 1178+20.0, 0.0 RT TO STA 1178+20.0, 123.0 RT - 123.0' [105 CY]

TRENCH BACKFILL

DR STR T4 W/2 T20F&G
 STA 1178+20.0, 0.0 RT
 STA 1180+00.0, 0.0 RT
 STA 1182+00.0, 0.0 RT
 STA 1184+00.0, 0.0 RT
 STA 1186+00.0, 0.0 RT
 STA 1188+00.0, 0.0 RT
 STA 1190+00.0, 0.0 RT

CONC HDWL FOR P DRAIN
 STA 1180+00.0, 51.0 LT
 STA 1180+00.0, 53.0 RT
 STA 1184+00.0, 49.0 LT
 STA 1184+00.0, 50.0 RT
 STA 1188+00.0, 49.0 LT
 STA 1188+00.0, 50.0 RT

TRENCH BACKFILL

PIPE UNDERDRAIN 4 SP
 STA 1180+00.0, 33.6 LT TO STA 1180+00.0, 51.0 LT - 17.4'
 STA 1180+00.0, 33.6 RT TO STA 1180+00.0, 53.0 RT - 19.4'
 STA 1184+00.0, 31.8 LT TO STA 1184+00.0, 49.0 LT - 17.2'
 STA 1184+00.0, 31.8 RT TO STA 1184+00.0, 50.0 RT - 18.2'
 STA 1188+00.0, 30.5 LT TO STA 1188+00.0, 49.0 LT - 18.5'
 STA 1188+00.0, 30.5 RT TO STA 1188+00.0, 50.0 RT - 19.5'

PIPE UNDERDRAINS 4
 STA 1177+00.0, 34.1 LT TO STA 1190+00.0, 29.5 LT - 1,305.7'
 STA 1177+00.0, 10.1 LT TO STA 1190+00.0, 5.5 LT - 1,301.4'
 STA 1177+00.0, 11.3 RT TO STA 1190+00.0, 5.5 RT - 1,298.4'
 STA 1177+00.0, 35.3 RT TO STA 1190+00.0, 29.5 RT - 1,294.0'

TRENCH BACKFILL

TRENCH BACKFILL

STORM SEW CL A 2 12
 STA 1188+00.0, 0.0 RT TO STA 1190+00.0, 0.0 RT - 197.0' [65 CY]

STORM SEW CL A 2 15
 STA 1186+00.0, 0.0 RT TO STA 1188+00.0, 0.0 RT - 197.0' [75 CY]

TRENCH BACKFILL

TRENCH BACKFILL

TRENCH BACKFILL

STATE OF ILLINOIS
 DEPARTMENT OF TRANSPORTATION

PROPOSED DRAINAGE PLAN
 INTERSTATE 270

| | | | |
|---------------------------|------------------------|----------------|----------------------|
| FILE NAME = | USER NAME = Edean | DESIGNED - JM | REVISED - 6/7/11 ADD |
| DB76A91-Sht-PrDrain03.dgn | | DRAWN - JM | REVISED - |
| | PLOT SCALE = 1/8" = 1' | CHECKED - MBL | REVISED - |
| | PLOT DATE = 3/18/11 | DATE - 3/18/11 | REVISED - |

SCALE: 1" = 50' SHEET NO. 3 OF 11 SHEETS STA. 1177+00 TO STA. 1190+00

| F.A.I. RTE. | SECTION | COUNTY | TOTAL SHEETS | SHEET NO. |
|--------------------|---------|---------|---------------------------|-----------|
| 270 | 60-1B-1 | MADISON | 712 | 263 |
| CONTRACT NO. 76A91 | | | ILLINOIS FED. AID PROJECT | |

KEY MAP

