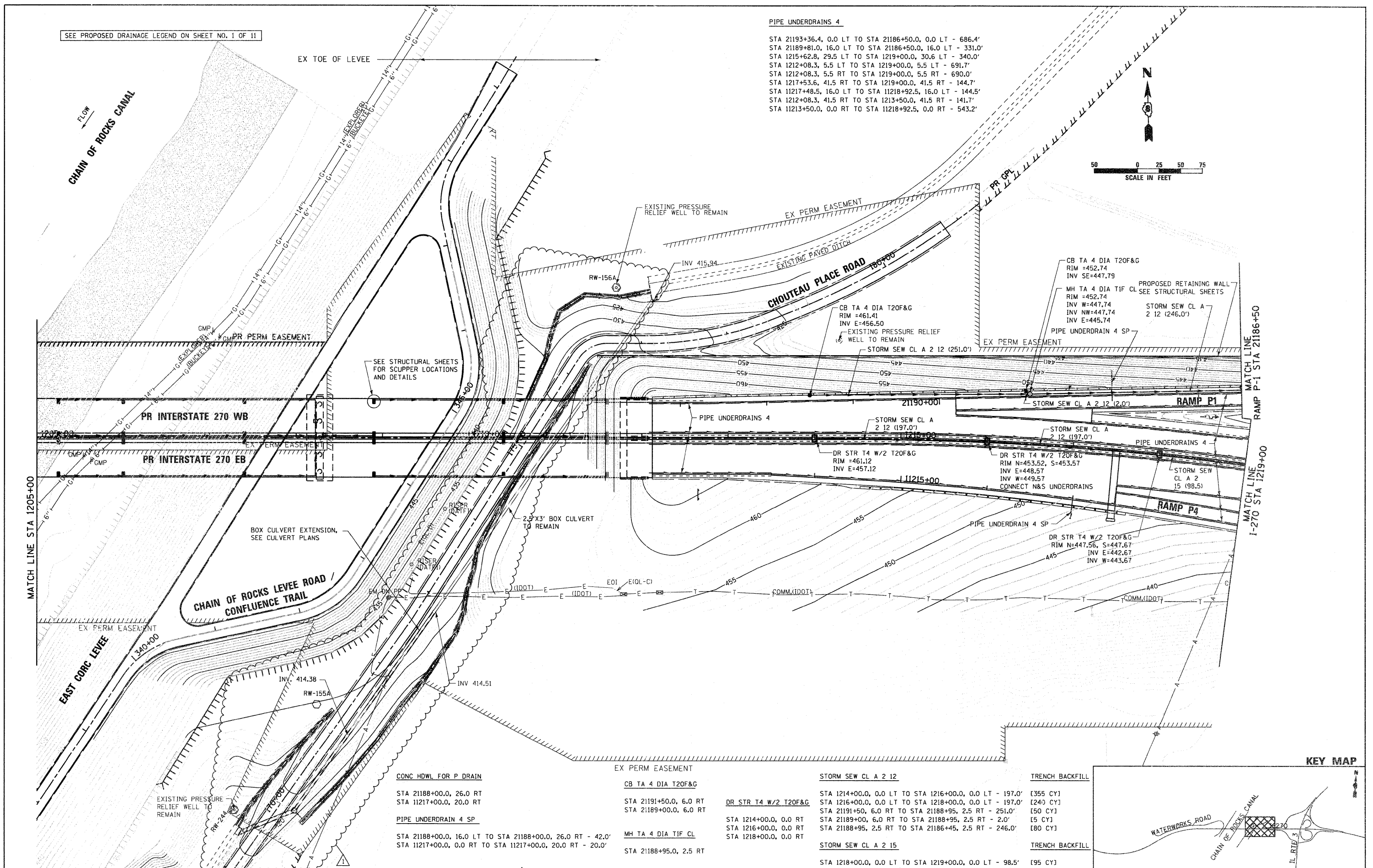
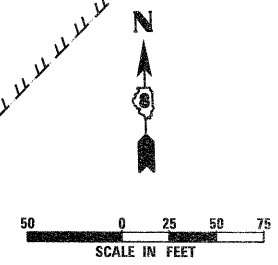


SEE PROPOSED DRAINAGE LEGEND ON SHEET NO. 1 OF 11

PIPE UNDERDRAINS 4

STA 21193+36.4, 0.0 LT TO STA 21186+50.0, 0.0 LT - 686.4'
 STA 21189+81.0, 16.0 LT TO STA 21186+50.0, 16.0 LT - 331.0'
 STA 1215+62.8, 29.5 LT TO STA 1219+00.0, 30.6 LT - 340.0'
 STA 1212+08.3, 5.5 LT TO STA 1219+00.0, 5.5 LT - 691.7'
 STA 1212+08.3, 5.5 RT TO STA 1219+00.0, 5.5 RT - 690.0'
 STA 1217+53.6, 41.5 RT TO STA 1219+00.0, 41.5 RT - 144.7'
 STA 11217+48.5, 16.0 LT TO STA 11218+92.5, 16.0 LT - 144.5'
 STA 1212+08.3, 41.5 RT TO STA 1213+50.0, 41.5 RT - 141.7'
 STA 11213+50.0, 0.0 RT TO STA 11218+92.5, 0.0 RT - 543.2'



CONC HDWL FOR P DRAIN
 STA 21188+00.0, 26.0 RT
 STA 11217+00.0, 20.0 RT

PIPE UNDERDRAIN 4 SP
 STA 21188+00.0, 16.0 LT TO STA 21188+00.0, 26.0 RT - 42.0'
 STA 11217+00.0, 0.0 RT TO STA 11217+00.0, 20.0 RT - 20.0'

CB TA 4 DIA T20F&G
 STA 21191+50.0, 6.0 RT
 STA 21189+00.0, 6.0 RT

MH TA 4 DIA T1F CL
 STA 21188+95.0, 2.5 RT

DR STR T4 W/2 T20F&G
 STA 1214+00.0, 0.0 RT
 STA 1216+00.0, 0.0 RT
 STA 1218+00.0, 0.0 RT

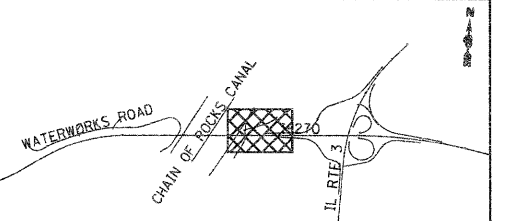
STORM SEW CL A 2 12
 STA 1214+00.0, 0.0 LT TO STA 1216+00.0, 0.0 LT - 197.0'
 STA 1216+00.0, 0.0 LT TO STA 1218+00.0, 0.0 LT - 197.0'
 STA 21191+50, 6.0 RT TO STA 21188+95, 2.5 RT - 251.0'
 STA 21189+00, 6.0 RT TO STA 21188+95, 2.5 RT - 2.0'
 STA 21188+95, 2.5 RT TO STA 21186+45, 2.5 RT - 246.0'

STORM SEW CL A 2 15
 STA 1218+00.0, 0.0 LT TO STA 1219+00.0, 0.0 LT - 98.5'

TRENCH BACKFILL
 [355 CY]
 [240 CY]
 [50 CY]
 [5 CY]
 [80 CY]

TRENCH BACKFILL
 [95 CY]

KEY MAP



FILE NAME = DB78A91-Sh1-Pr-Drain05.dgn	USER NAME = jmdlet	DESIGNED - JWM	REVISED - 6/7/11 ADDENDUM 1	STATE OF ILLINOIS DEPARTMENT OF TRANSPORTATION	PROPOSED DRAINAGE PLAN INTERSTATE 270			F.A.I. RTE. 270	SECTION 60-1B-1	COUNTY MADISON	TOTAL SHEETS 712	SHEET NO. 265
	PLOT SCALE = 1:50	CHECKED - MBL	REVISED -		SCALE: 1" = 50'	SHEET NO. 5 OF 11 SHEETS	STA. 1205+00 TO STA. 1219+00	ILLINOIS FED. AID PROJECT				
	PLOT DATE = 4/20/11	DATE - 3/18/11	REVISED -		CONTRACT NO. 76A91							