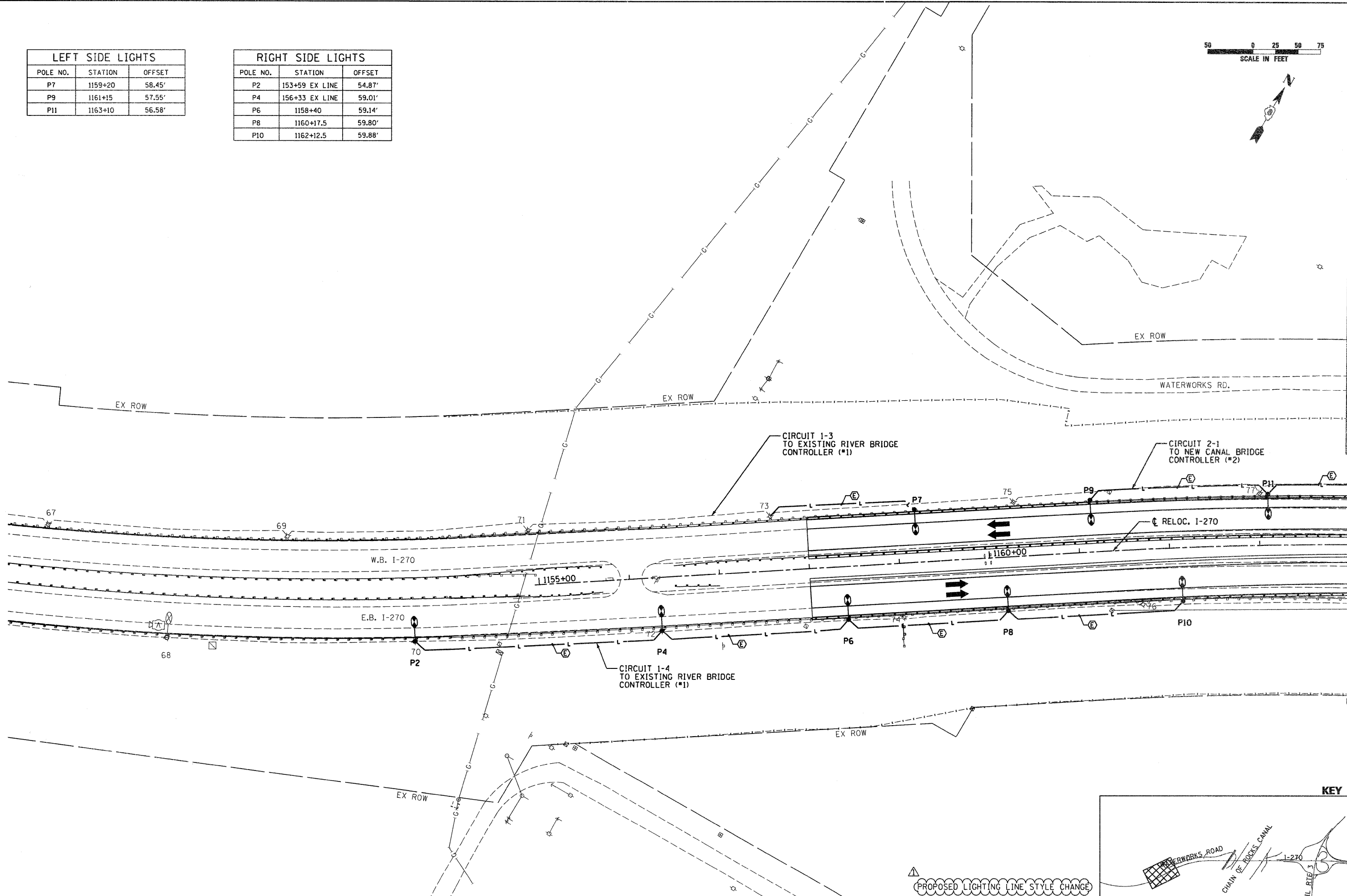


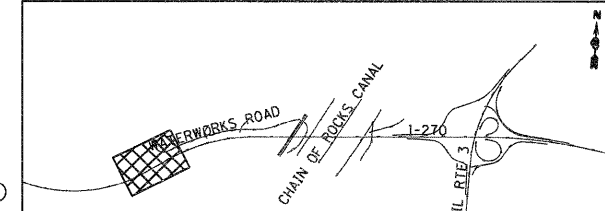
LEFT SIDE LIGHTS		
POLE NO.	STATION	OFFSET
P7	1159+20	58.45'
P9	1161+15	57.55'
P11	1163+10	56.58'

RIGHT SIDE LIGHTS		
POLE NO.	STATION	OFFSET
P2	153+59 EX LINE	54.87'
P4	156+33 EX LINE	59.01'
P6	1158+40	59.14'
P8	1160+17.5	59.80'
P10	1162+12.5	59.88'



MATCH LINE WATERWORKS ROAD STA 406+25  
 MATCH LINE I-270 STA 1164+00

**KEY MAP**



PROPOSED LIGHTING LINE STYLE CHANGE

FILE NAME = #FILE#	USER NAME = #USER#	DESIGNED - FSM	REVISED -	<b>STATE OF ILLINOIS DEPARTMENT OF TRANSPORTATION</b>	<b>HIGHWAY LIGHTING PLANS INTERSTATE 270</b>	FAI	SECTION	COUNTY	TOTAL SHEETS	SHEET NO.
	PLLOT SCALE = #SCALE#	CHECKED - AAB	REVISED - 6/7/11 ADDENDUM			270	60-1B-1	MADISON	712	330
	PLLOT DATE = #DATE#	DATE - 3/18/11	REVISED -	SCALE: 1" = 50'	SHEET NO. 2 OF 10 SHEETS	STA. 1151+00	TO STA. 1164+00	ILLINOIS FED. AID PROJECT CONTRACT NO. 76A91		

