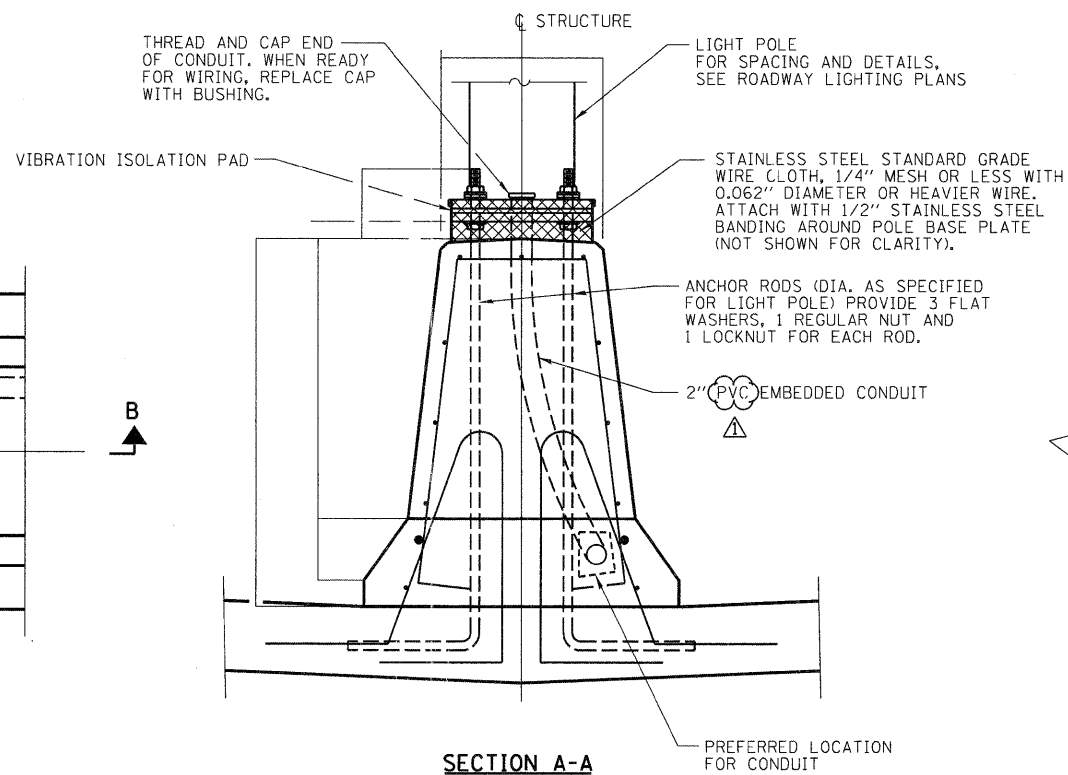
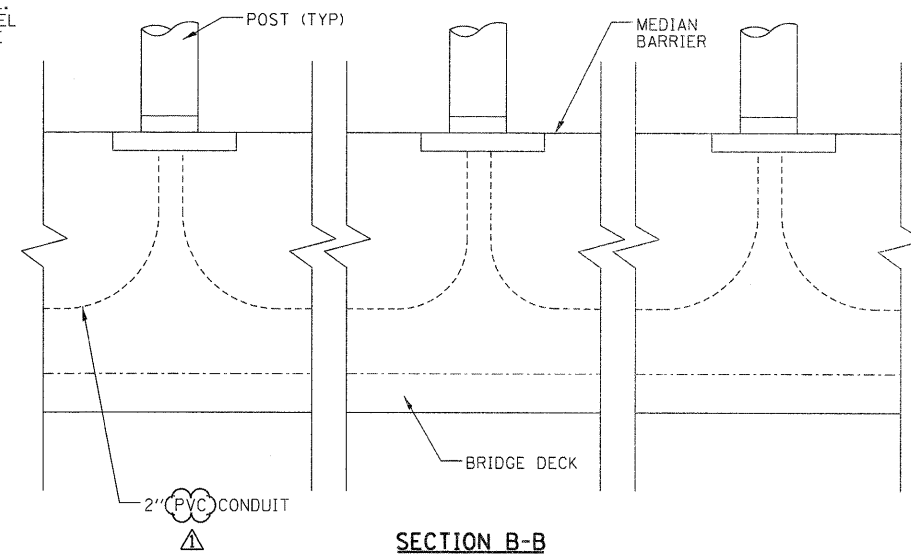


NOTE:
COST OF ANCHOR RODS IS
INCLUDED WITH CONCRETE
SUPERSTRUCTURE.

PLAN

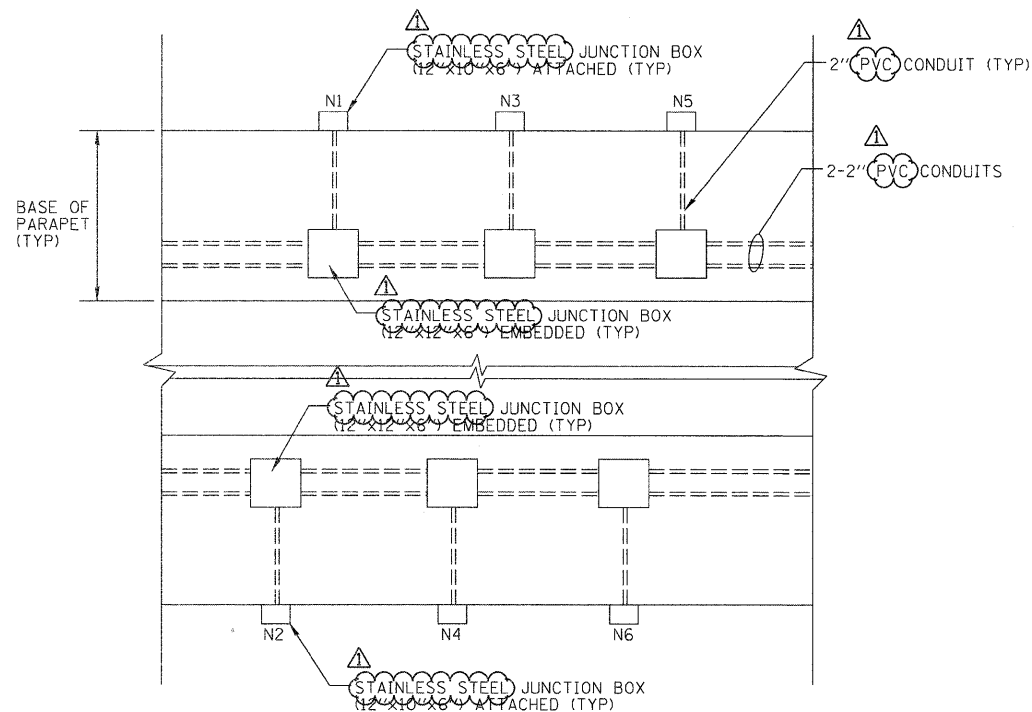


SECTION A-A

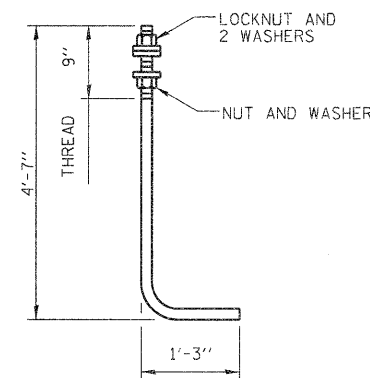


SECTION B-B

POLE LOCATION ON MEDIAN
(SEE NOTE 1) N.T.S.



DETAIL A
N.T.S.



ANCHOR ROD

DIAMETER AS SPECIFIED FOR LIGHT POLES.
(ASTM F 1554 GRADE 105)

NOTES:
1. SEE SHEET 340 FOR POLE BASE WIRING DETAIL.

FILE NAME = #FILE#	USER NAME = #USER#	DESIGNED - FSM	REVISED -	STATE OF ILLINOIS DEPARTMENT OF TRANSPORTATION	LIGHTING DETAILS INTERSTATE 270		FAI	SECTION	COUNTY	TOTAL SHEETS	SHEET NO.
		DRAWN - MNR	REVISED -		270	60-18-1	MADISON	712	339		
PLOT SCALE = #SCALE#	CHECKED - AAB	REVISED - 6/7/11 ADDENDUM	REVISED -	SCALE:	SHEET NO. 1 OF 10 SHEETS	STA.	TO STA.	CONTRACT NO. 76A91			
PLOT DATE = #DATE#	DATE - 3/18/11	REVISED -	REVISED -	ILLINOIS FED. AID PROJECT							

