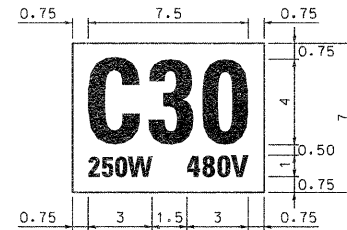


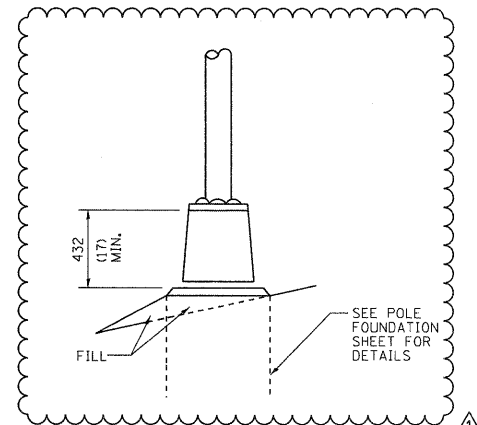
NO BORDER, BLACK ON WHITE;  
[C30] C 52Ø SPACING; [250W] C; [480V] C.



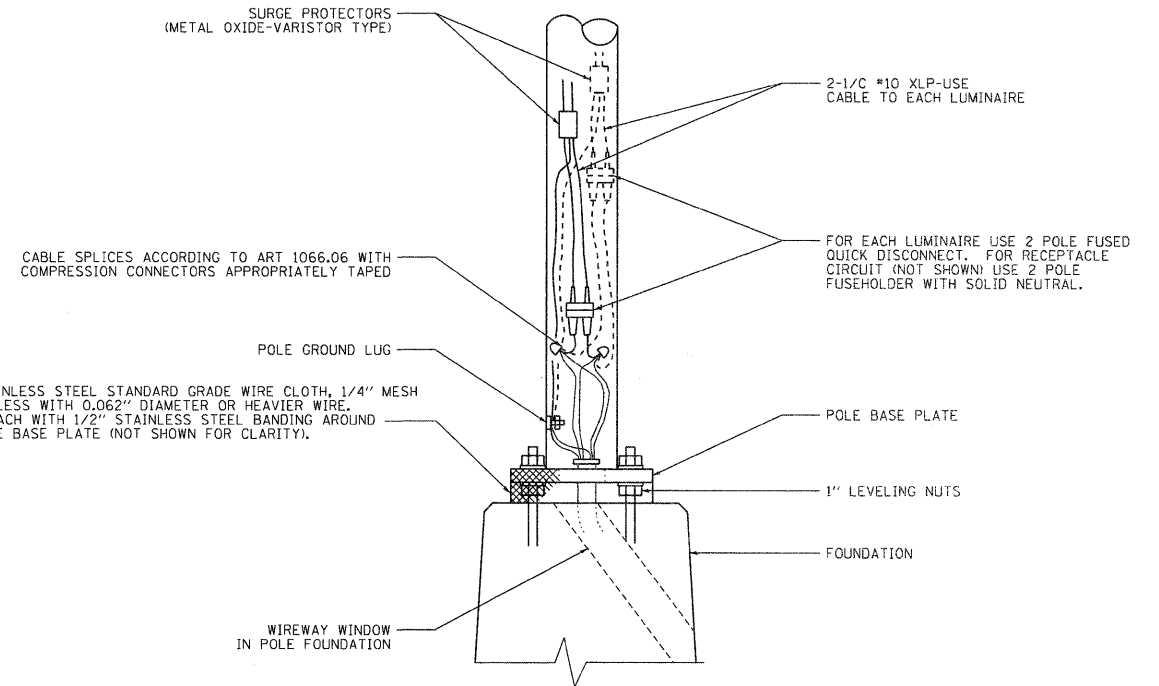
THE CONTRACTOR SHALL FURNISH AND INSTALL A LIGHT POLE IDENTIFICATION OF EACH NEW LIGHT POLE, AS SHOWN ABOVE, AND CONFORMING TO THE REQUIREMENTS OF SECTION 830 AND ARTICLE 1069.06 OF THE STANDARD SPECIFICATIONS.

THE LIGHT POLE IDENTIFICATION PANEL SHALL BE MOUNTED, APPROXIMATELY 7 FT. ABOVE THE ADJACENT PAVEMENT GRADE, VISIBLE TO APPROACHING TRAFFIC.

**LIGHT POLE IDENTIFICATION**  
N.T.S.



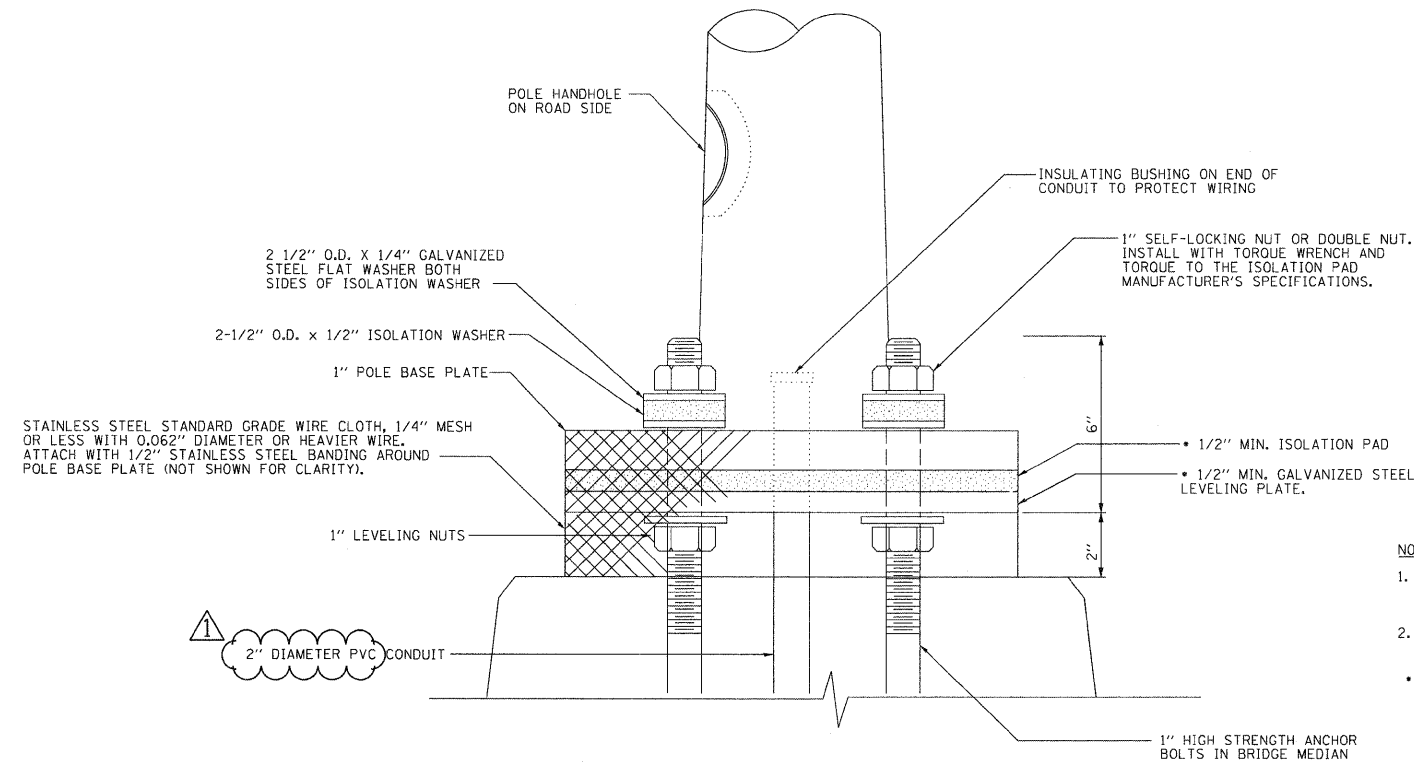
**TRANSFORMER BASE**



**POLE BASE WIRING DETAIL**  
N.T.S.

**NOTES:**

1. ALL TAPED SPLICES SHALL USE 2 LAYERS OF ELECTRICAL TAPE OVER 3 LAYERS OF RUBBER TAPE AS REQUIRED BY THE STANDARD SPECIFICATIONS. COAT THE FINISHED TAPED SPLICE WITH BONDING COMPOUND.
2. ALL CABLE SPLICES SHALL BE TAPED UNLESS ANOTHER METHOD HAS BEEN SPECIFICALLY APPROVED BY THE ENGINEER.
3. FOR EXAMPLE PURPOSES, THE POLE IS SHOWN ON AN ANCHOR BASE. IF THE POLE IS REQUIRE TO BE SET ON A BREAKAWAY BASE, CONSULT THE STANDARD SPECIFICATIONS.



**POLE MOUNTED ON BRIDGE MEDIAN DETAIL**  
N.T.S.

**NOTES:**

1. THICKNESS OF ISOLATION PAD AND WASHERS SHALL BE ACCORDING TO ISOLATION PAD MANUFACTURER'S RECOMMENDATIONS BASED UPON POLE HEIGHT AND LOADING.
  2. ALL HARDWARE SHALL BE GALVANIZED OR STAINLESS STEEL, UNLESS NOTED OTHERWISE.
- ISOLATION PAD AND LEVELING PLATE ARE TO MATCH THE FOOTPRINT OF THE POLE BASE PLATE

FILE NAME = #FILE#	USER NAME = #USER#	DESIGNED - FSM	REVISED -	STATE OF ILLINOIS DEPARTMENT OF TRANSPORTATION	LIGHTING DETAILS		FAI	SECTION	COUNTY	TOTAL SHEETS	SHEET NO.
		DRAWN - MNR	REVISED -		INTERSTATE 270		270	60-1B-1	MADISON	712	340
	PLOT SCALE = #SCALE#	CHECKED - AAB	REVISED - 6/7/11 ADDENDUM ⚠		SCALE:	SHEET NO. 2 OF 10 SHEETS	STA.	TO STA.	CONTRACT NO. 76A91		
	PLOT DATE = #DATE#	DATE - 3/18/11	REVISED -		ILLINOIS FED. AID PROJECT						

