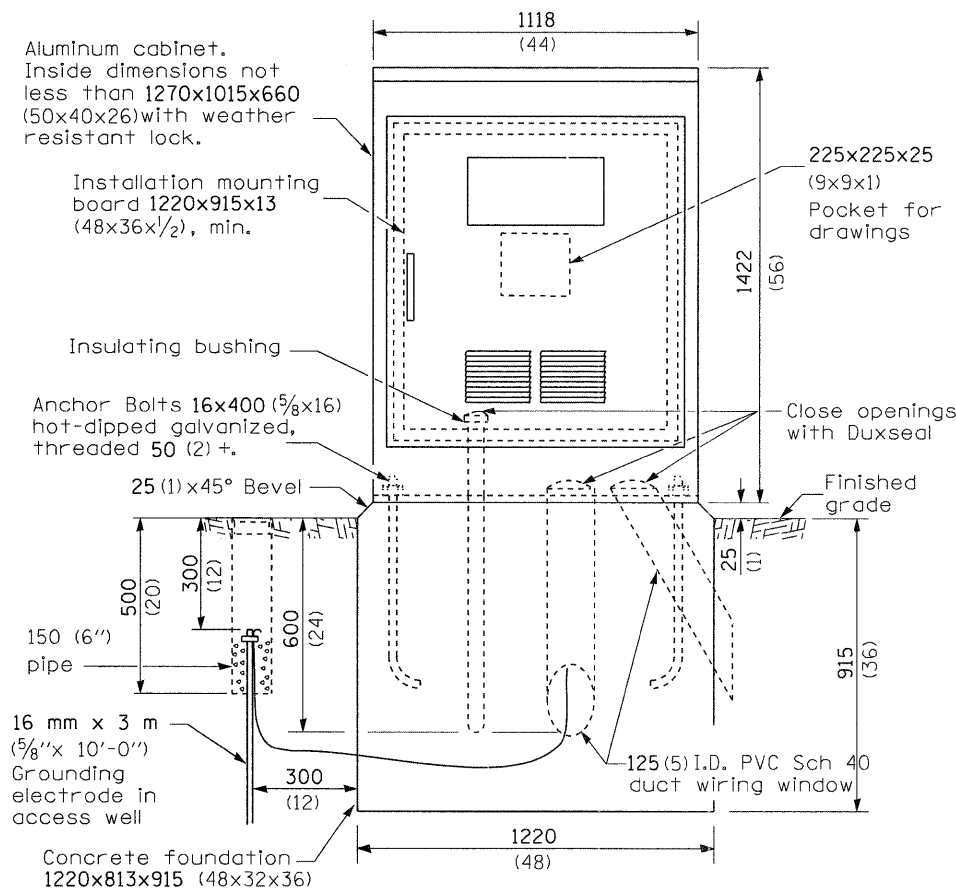
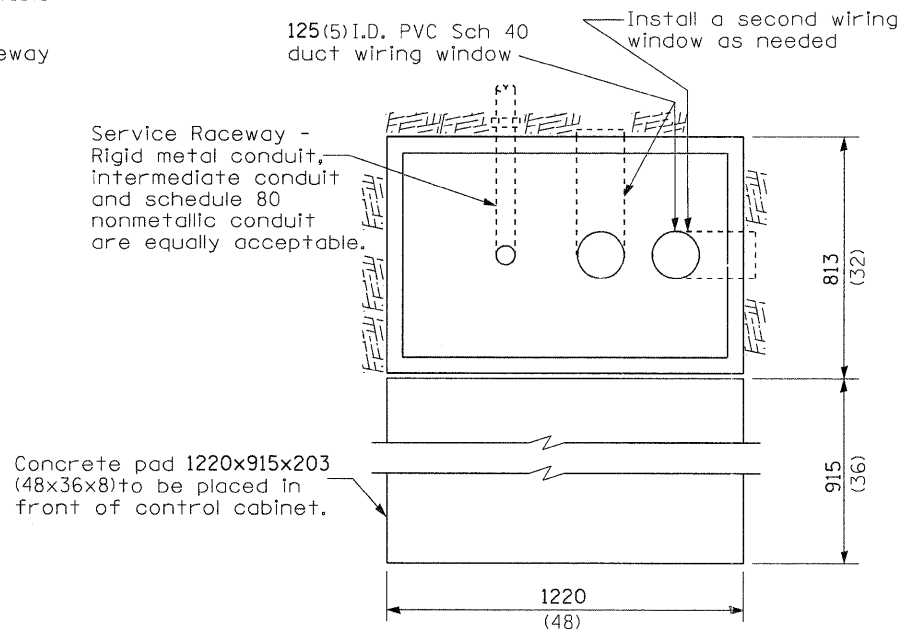


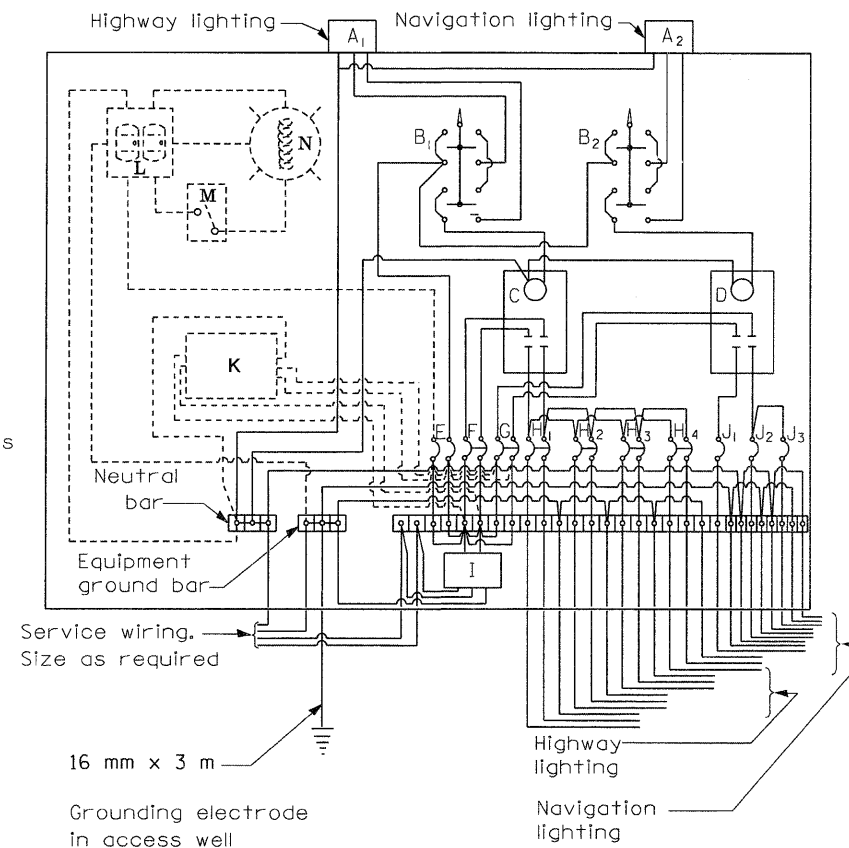
SERVICE POLE



CONTROL INSTALLATION (FRONT VIEW)



CONTROLLER FOUNDATION (TOP VIEW)



- A1 Photocell (remote mount in urban areas)
  - A2
  - B1
  - B2 3 position selector switch
  - C, D 100 amp\* & 30 amp\* electrically held contactors
  - E 15 amp, 1 pole, circuit breaker
  - F 100 amp\*, 2 pole, main circuit breaker
  - G 30 amp\*, 2 pole, main circuit breaker
  - H 30 amp\*, 2 pole, branch circuit breaker, 2 spare required, only 1 shown
  - I Surge arrester
  - J 20 amp\*, single pole circuit breaker, 2 spare
  - K Transformer (see notes), 2 KVA\*, 240/480V primary, 120/240V sec, single phase
  - L GFCI duplex receptacle
  - M Single pole, single throw switch
  - N Shielded security fixture with 100W lamp
- (\* = Size larger as needed)

GENERAL NOTES

- 1) This drawing depicts the basic configuration of the lighting controller. Branch circuit breakers shall be provided and oriented as required by the plan sheets and details.
- 2) Wiring shall be panel board fashion. All bends shall be right angles. All runs shall be vertical or parallel to panel board. Wires shall be grouped or laced.
- 3) All control installation components shall be U.L. listed.
- 4) Label equipment ground and neutral.
- 5) Locate service pole and control installation adjacent to R.O.W. line with a minimum distance of 9 m (30') from the edge of pavement. See plans for approx. location, exact location shall be established by the Engineer.
- 6) The underground service entrance wiring shall not exceed 46 m (150'). Total aerial and underground service between the control installation and primary transformer shall not exceed 76 m (250').
- 7) Raceways shall terminate 75 mm (3 in.) above top of concrete foundation.
- 8) For 480 V service, a step down transformer (dashed lines) is required.
- 9) Add receptacle, light, and switch in control cabinet, when specified.
- 10) Two (2) spare branch breakers are required but are not shown.

240 V. SERVICE  
 480 V. SERVICE

All dimensions are in millimeters (inches) unless otherwise shown.

CONTROLLER (DUAL) 2 NOTES

1. The step down transformer shall be sized 2 KVA minimum.
2. The roadway and navigation lighting shall be each on a separate main breaker, contactor and HOA switch. The main breaker and contactor for the roadway and navigation lighting shall be rated each at 100 amp. and 30 amp. respectively.

FILE NAME =	USER NAME = #USER#	DESIGNED -	REVISED -	<b>STATE OF ILLINOIS DEPARTMENT OF TRANSPORTATION</b>	<b>CONTROL INSTALLATION INTERSTATE 270</b>		FAI	SECTION	COUNTY	TOTAL SHEETS	SHEET NO.
#FILE#		DRAWN -	REVISED -		270	60-1B-1	MADISON	712	343		
	PLOT SCALE = #SCALE#	CHECKED -	REVISED -		CONTRACT NO. 76A91						
	PLOT DATE = #DATE#	DATE 3/18/11	REVISED -		SCALE:	SHEET NO. 5 OF 10 SHEETS	STA. TO STA.	ILLINOIS FED. AID PROJECT			