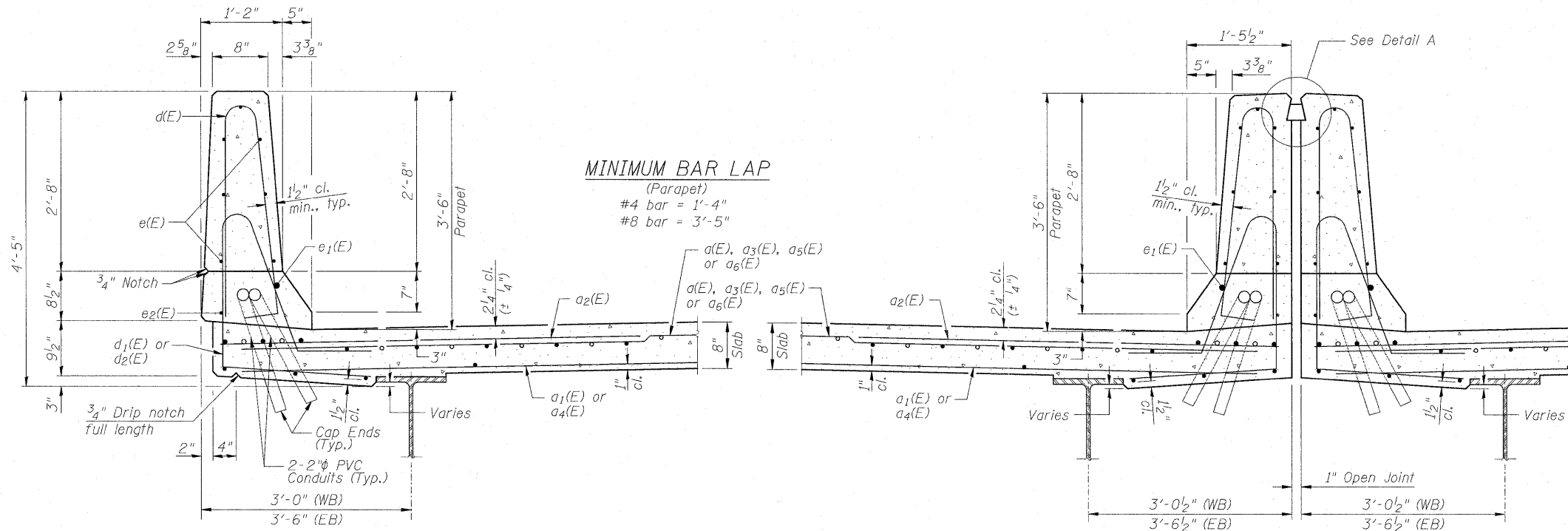
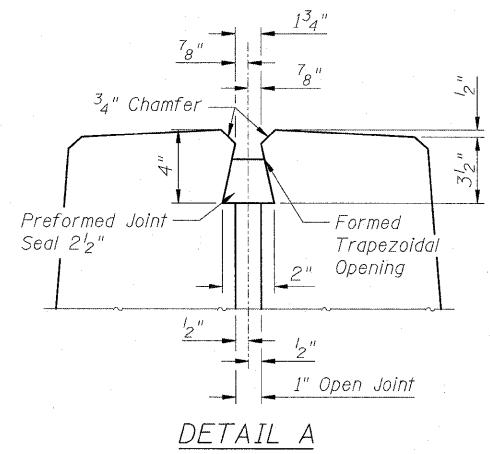


INSIDE ELEVATION OF PARAPET

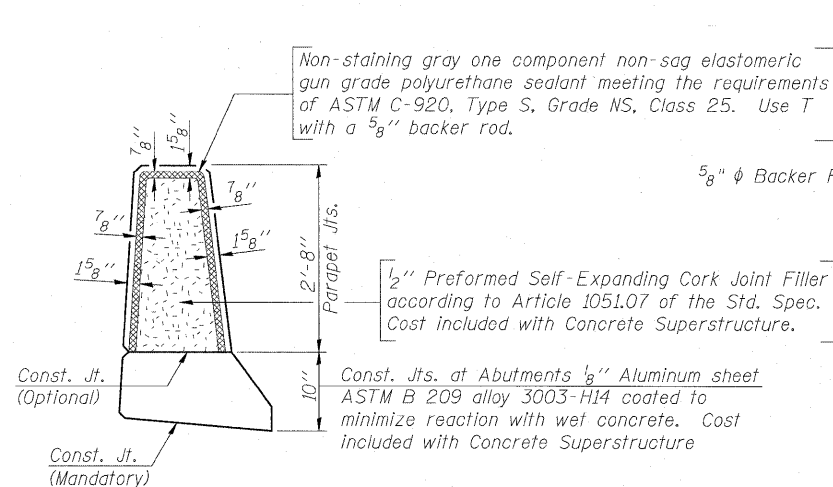


SECTION THRU EXTERIOR PARAPET

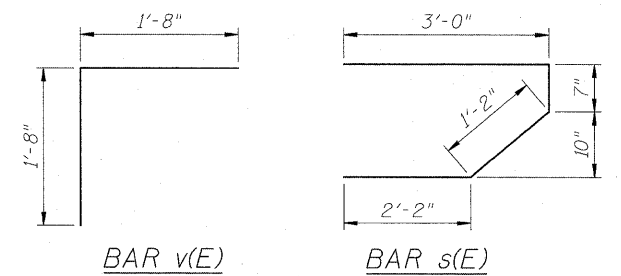
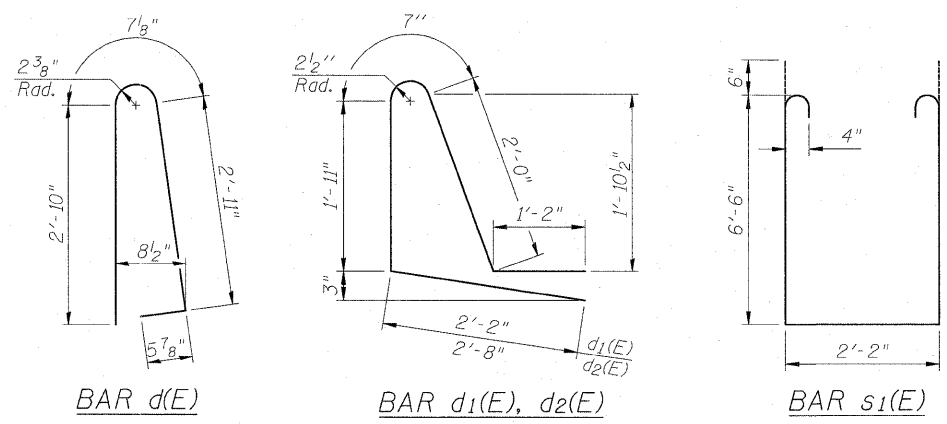
SECTION THRU MEDIAN PARAPET



DETAIL A



PARAPET JOINT DETAILS



SUPERSTRUCTURE DETAILS
 INTERSTATE 70 OVER 1ST STREET
 FAI-70
 SECTION 82-1-2HB
 ST. CLAIR COUNTY
 STA. 192+97.45
 STRUCTURE NO. 082-0312 (EB)
 STRUCTURE NO. 082-0313 (WB)

ZROKA Engineering, P.C.
 4216 North Hermitage
 Chicago, IL 60613

FILE NAME = ... \08TRI-0820312-0820313-76C50-010-SuperstructureDetails.dgn	USER NAME = SAW	DESIGNED - LAS	REVISED -
PLOT SCALE = 1:1000 / IN.	DRAWN - SAW	CHECKED - LAS	REVISED -
PLOT DATE = 2/25/2011	DATE - 3-18-11	REVISED -	REVISED -

STATE OF ILLINOIS
 DEPARTMENT OF TRANSPORTATION

SUPERSTRUCTURE DETAILS

SCALE: NONE SHEET NO. 10 OF 30 SHEETS STA. TO STA.

F.A.P. RTE.	SECTION	COUNTY	TOTAL SHEETS	SHEET NO.
998	82-1-2HB	ST. CLAIR	72	40
SN 082-0312 & 082-0313		CONTRACT NO. 76C50		
FED. ROAD DIST. NO.		ILLINOIS FED. AID PROJECT		