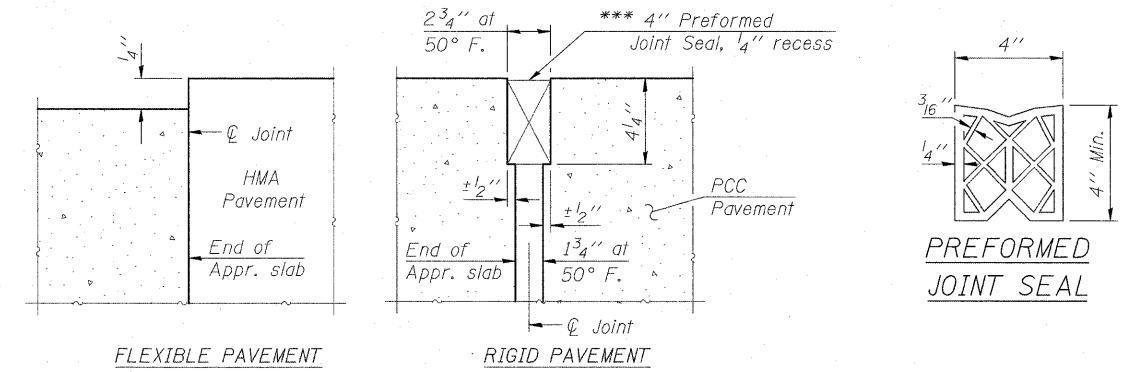


Notes:

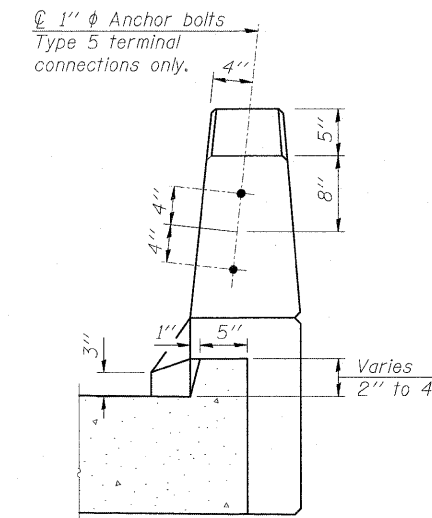
See Sheet 13 of 30 for Sections B-B, C-C, & D-D and Views E-E & G-G.

Bars indicated thus: 46x2-#5 etc. indicates 46 lines of bars with 2 lengths per line.

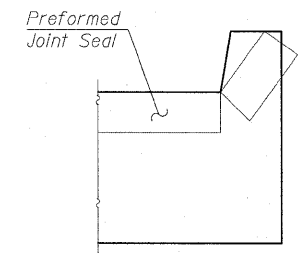
*** Cost Included with Concrete Superstructure.



DETAIL A

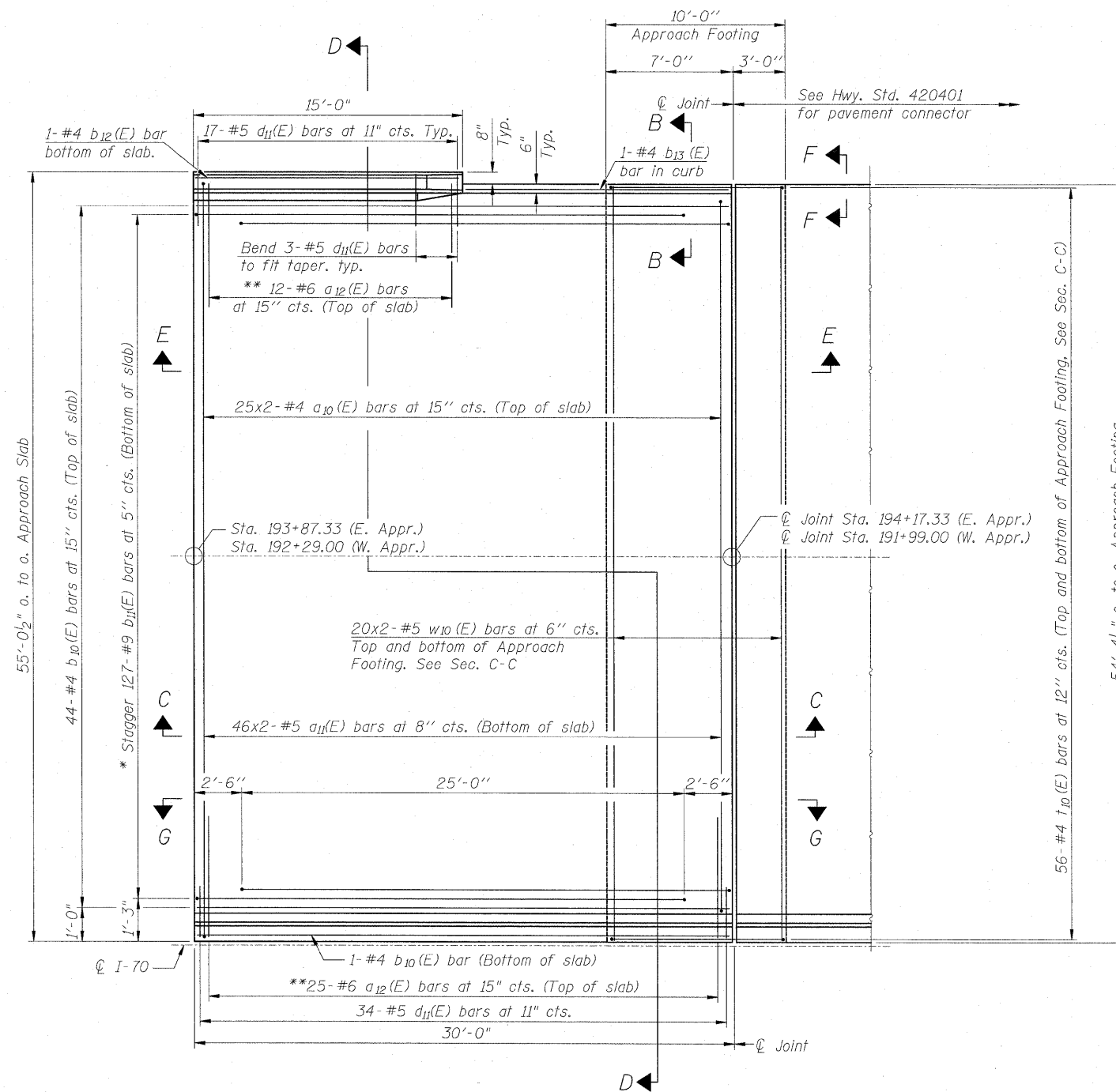


VIEW B-B
(Exit ends only)



VIEW F-F

Angle Preformed Joint Seal at 45° at curbs when req'd for drainage.



EAST APPROACH SLAB PLAN
(West Approach Slab Similar)

* Tilt #9 bars as required to maintain clearance.
** Alternate with a₁₀(E) bars, typ. ea. parapet.

MIN. BAR LAPS

#4 bar = 1'-8"
#5 bar = 2'-2"



FILE NAME = ... \DBTRI-2622312-882313-76C50-012-WBAp	USER NAME = SAW	DESIGNED - LAS	REVIS	STATE OF ILLINOIS DEPARTMENT OF TRANSPORTATION	WESTBOUND BRIDGE APPROACH SLAB DETAILS 1	F.A.P. RTE.	SECTION	COUNTY	TOTAL SHEETS	SHEET NO.
...	...	DRAWN - SAW	REVIS			998	82-1-2HB	ST. CLAIR	72	42
...	...	CHECKED - LAS	REVIS			SN 082-0312 & 082-0313	CONTRACT NO. 76C50			
...	...	DATE - 3-18-11	REVIS			FED. ROAD DIST. NO.	ILLINOIS FED. AID PROJECT			
PLOT SCALE = 1:8000 / IN.	PLOT DATE = 2/25/2011			SCALE: NONE	SHEET NO. 12 OF 30 SHEETS	STA.	TO STA.			