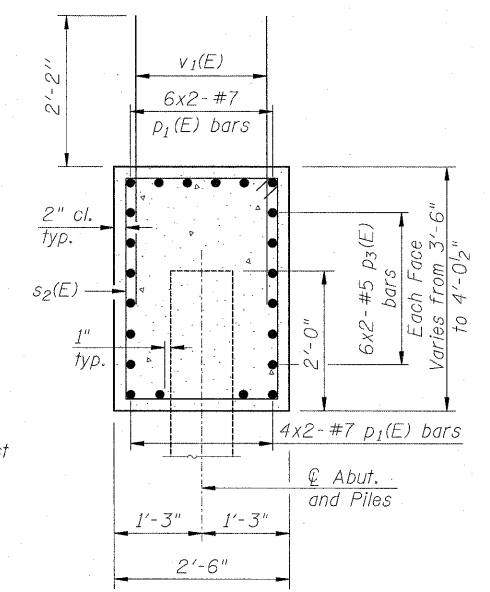


ELEVATION



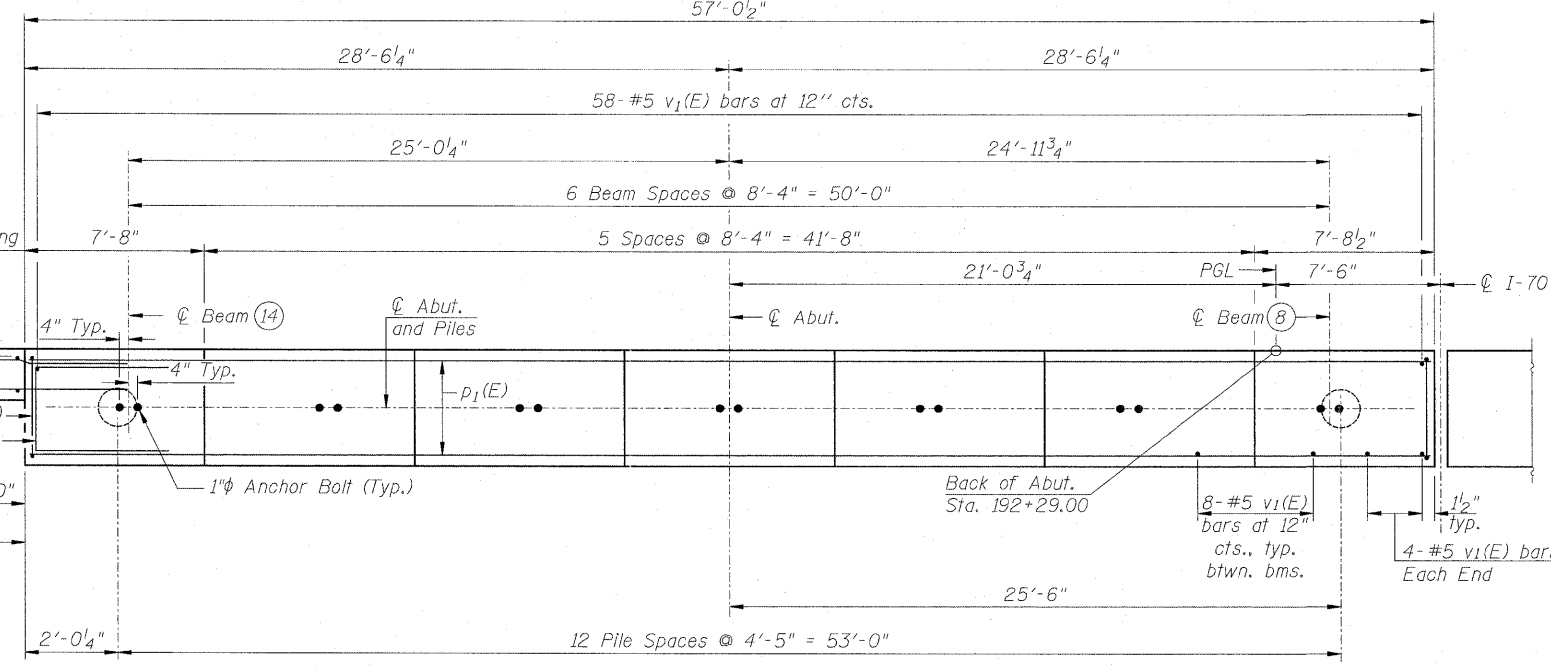
SEC. THRU ABUT.

BILL OF MATERIAL

Bar	No.	Size	Length	Shape
h(E)	26	#7	13'-9"	—
h2(E)	11	#4	9'-8"	—
h3(E)	1	#4	10'-4"	—
h4(E)	4	#4	16'-4"	—
p1(E)	20	#7	31'-3"	—
p3(E)	24	#5	30'-2"	—
s2(E)	52	#5	11'-5"	□
s3(E)	17	#4	5'-8"	□
u(E)	8	#6	6'-10"	□
v1(E)	116	#5	4'-4"	—
v2(E)	11	#5	17'-7"	—
v3(E)	11	#4	8'-0"	—
z(E)	11	#4	5'-4"	┌
Concrete Structures		Cu. Yd.	25.9	
Reinforcement Bars, Epoxy Coated		Pound	4,480	
Furnishing Metal Shell Piles 14" x 0.250"		Foot	744	
Driving Piles		Foot	744	
Test Pile Metal Shells		Each	1	

For details of Bar Splicers, see Sheet 23 of 30.  
 For details of piles, see Sheet 24 of 30.  
 Bars indicated thus: 6x2-#7 etc. indicates 6 lines of bars with 2 lengths per line.

**EASTBOUND WEST ABUTMENT**  
**INTERSTATE 70 OVER 1ST STREET**  
**FAI-70**  
**SECTION 82-1-2HB**  
**ST. CLAIR COUNTY**  
**STA. 192+97.45**  
**STRUCTURE NO. 082-0312 (EB)**  
**STRUCTURE NO. 082-0313 (WB)**



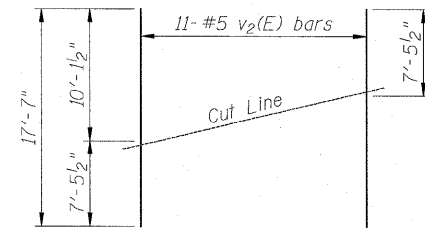
PLAN

PILE DATA

Type: Metal Shell - 14 in. dia. x 0.25 in. walls  
 Nominal Required Bearing: 400 k  
 Factored Resistance Available: 200 k  
 Est. Length: 62 ft.  
 No. Production Piles: 12  
 No. Test Piles: 1  
 Piles shall be driven through 18" diameter precored holes extending to elevation 407.0 according to Article 512.09(c) of the Standard Specifications.  
 Cost included in driving piles.

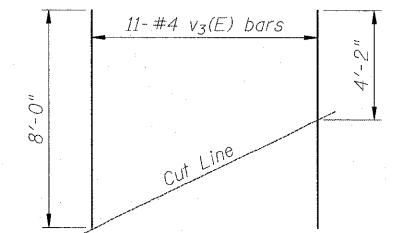
MIN. BAR LAP

#5 Bar = 3'-8"  
 #7 Bar = 5'-10"



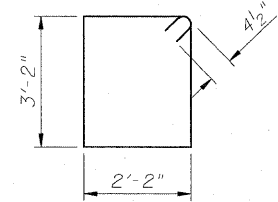
FIELD CUTTING DIAGRAM 1

Order v2(E) full length. Cut as shown and use remainder of bars in opposite face.

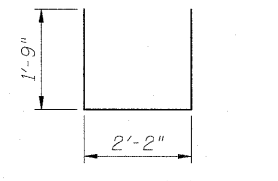


FIELD CUTTING DIAGRAM 2

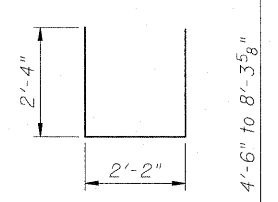
Order v3(E) full length. Cut as shown and discard remainder.



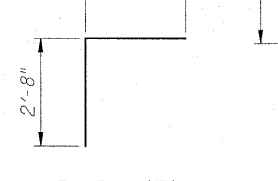
BAR s2(E)



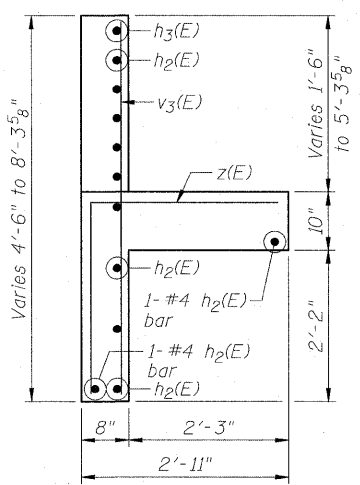
BAR s3(E)



BAR u(E)



BAR z(E)



SECTION A-A

Maximum Applied Service Bearing Pressure = 1310 psf



STATE OF ILLINOIS  
 DEPARTMENT OF TRANSPORTATION

EASTBOUND WEST ABUTMENT

SCALE: NONE SHEET NO. 21 OF 30 SHEETS STA. TO STA.

F.A.P. RTE.	SECTION	COUNTY	TOTAL SHEETS	SHEET NO.
99B	82-1-2HB	ST. CLAIR	72	51
SN 082-0312 & 082-0313		CONTRACT NO. 76C50		
FED. ROAD DIST. NO.		ILLINOIS FED. AID PROJECT		

FILE NAME	USER NAME	DESIGNED	REVISIONS
... \DBTR1-0820312-0820313-76C50-021-EBWestAbut.dgn	SAW	LAS	-
		SAW	-
		LAS	-
		3-18-11	-