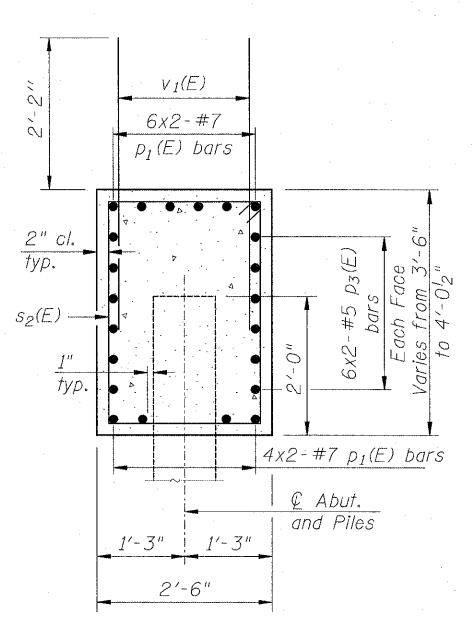
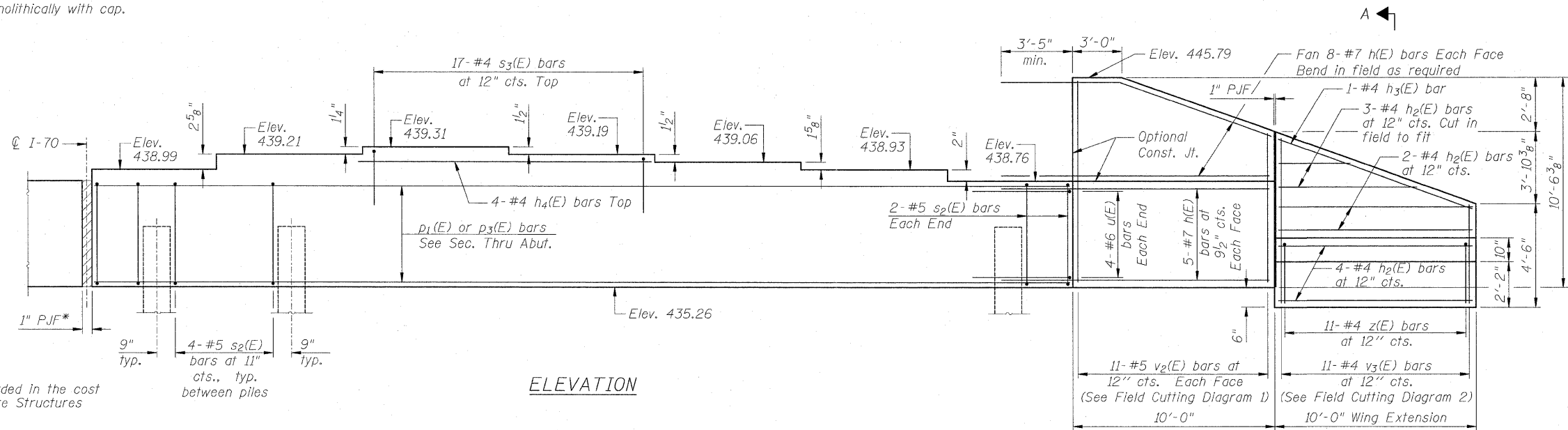
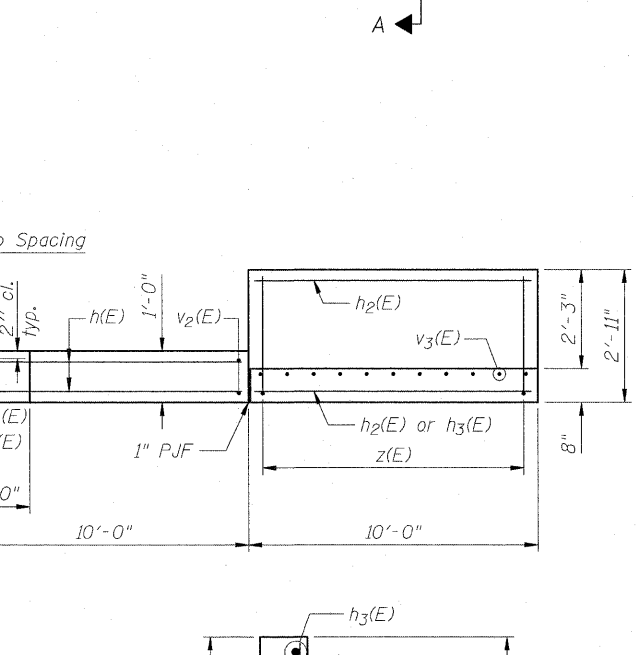
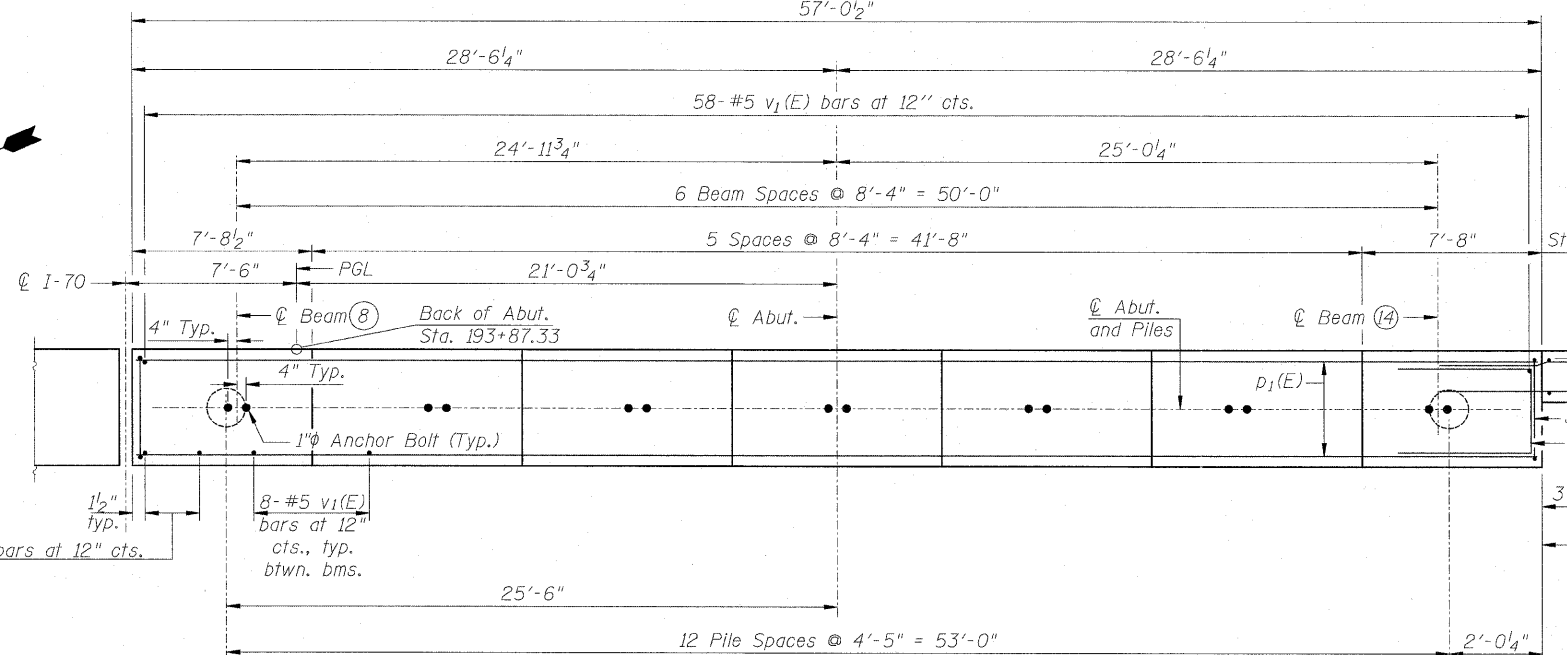


Notes:
Pour steps monolithically with cap.



*PJF included in the cost of Concrete Structures

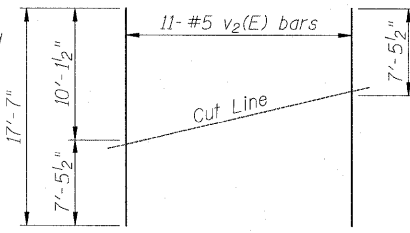


BILL OF MATERIAL

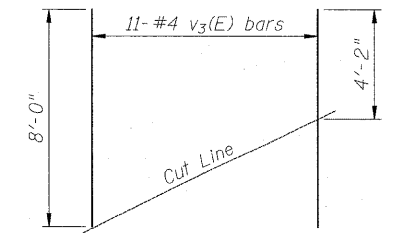
Bar	No.	Size	Length	Shape
h(E)	26	#7	13'-9"	—
h2(E)	11	#4	9'-8"	—
h3(E)	1	#4	10'-4"	—
h4(E)	4	#4	16'-4"	—
p1(E)	20	#7	31'-3"	—
p3(E)	24	#5	30'-2"	—
s2(E)	52	#5	11'-5"	□
s3(E)	17	#4	5'-8"	□
u(E)	8	#6	6'-10"	□
v1(E)	116	#5	4'-4"	—
v2(E)	11	#5	17'-7"	—
v3(E)	11	#4	8'-0"	—
z(E)	11	#4	5'-4"	┌
Concrete Structures			Cu. Yd.	25.9
Reinforcement Bars, Epoxy Coated			Pound	4,480
Furnishing Metal Shell Piles 14" x 0.250"			Foot	900
Driving Piles			Foot	900
Test Pile Metal Shells			Each	1

PILE DATA
Type: Metal Shell - 14 in. dia. x 0.25 in. walls
Nominal Required Bearing: 400 k
Factored Resistance Available: 200 k
Est. Length: 75 ft.
No. Production Piles: 12
No. Test Piles: 1
Piles shall be driven through 18" diameter precored holes extending to elevation 407.0 according to Article 512.09(c) of the Standard Specifications.
Cost included in driving piles.

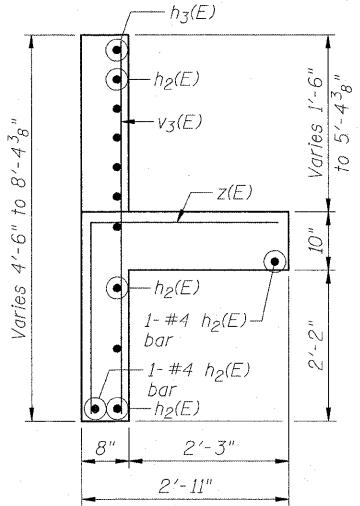
MIN. BAR LAP
#5 Bar = 3'-8"
#7 Bar = 5'-10"



FIELD CUTTING DIAGRAM 1
Order v2(E) full length. Cut as shown and use remainder of bars in opposite face.



FIELD CUTTING DIAGRAM 2
Order v3(E) full length. Cut as shown and discard remainder.



SECTION A-A
Maximum Applied Service Bearing Pressure = 1310 psf

EASTBOUND EAST ABUTMENT
INTERSTATE 70 OVER 1ST STREET
FAI-70
SECTION 82-1-2HB
ST. CLAIR COUNTY
STA. 192+97.45
STRUCTURE NO. 082-0312 (EB)
STRUCTURE NO. 082-0313 (WB)



FILE NAME = ...082-0312-0820313-76C58-822-EBE	USER NAME = SAW	DESIGNED - LAS	REVISED -	STATE OF ILLINOIS DEPARTMENT OF TRANSPORTATION	EASTBOUND EAST ABUTMENT	F.A.P. RTE. = 998	SECTION = 82-1-2HB	COUNTY = ST. CLAIR	TOTAL SHEETS = 72	SHEET NO. = 52		
PLOT SCALE = 1/8" = 1'-0"	DRAWN - SAW	CHECKED - LAS	REVISED - IN.			SCALE: NONE	SHEET NO. 22 OF 30 SHEETS	STA. TO STA.	CONTRACT NO. 76C50	ILLINOIS FED. AID PROJECT		
PLOT DATE = 2/25/2011	DATE = 3-18-11	REVIS	REVIS									