

S 2-01
 STA 65+37.50 (55S70W)
 O/S 15.00' RT
 MANHOLES, SANITARY 6'-DIAM.
 TYPE 1 FRAME CL
 RIM: 413.43
 E. INV (42''): 404.83
 W. INV (42''): 404.83

S 2-02
 STA 67+00.00 (55S70W)
 O/S 14.25' RT
 MANHOLES, SANITARY 6'-DIAM.
 TYPE 1 FRAME CL
 RIM: 415.07
 E. INV (42''): 404.96
 W. INV (42''): 404.96

S 2-03
 STA 67+41.00 (55S70W)
 O/S 15.00' RT
 MANHOLES, SANITARY 7'-DIAM.
 TYPE 1 FRAME CL
 RIM: 417.12
 N. INV (21''): 404.99
 NW. INV (42''): 404.99
 E. INV (42''): 404.99

S 2-04
 STA 67+58.00 (55S70W)
 O/S 28.00' RT
 MANHOLES, SANITARY 6'-DIAM.
 TYPE 1 FRAME CL
 RIM: 417.95
 NW. INV (36''): 405.01
 SE. INV (42''): 405.01

S 2-05
 STA 66+00.00 (55S70W)
 O/S 30.00' LT
 INLETS, TYPE B
 TYPE 20 F&G
 RIM: 420.28
 N. INV (12''): 415.65

S 2-06
 STA 66+00.00 (55S70W)
 O/S 10.00' RT
 INLETS, TYPE B
 TYPE 20 F&G
 RIM: 418.64
 S. INV (12''): 414.45

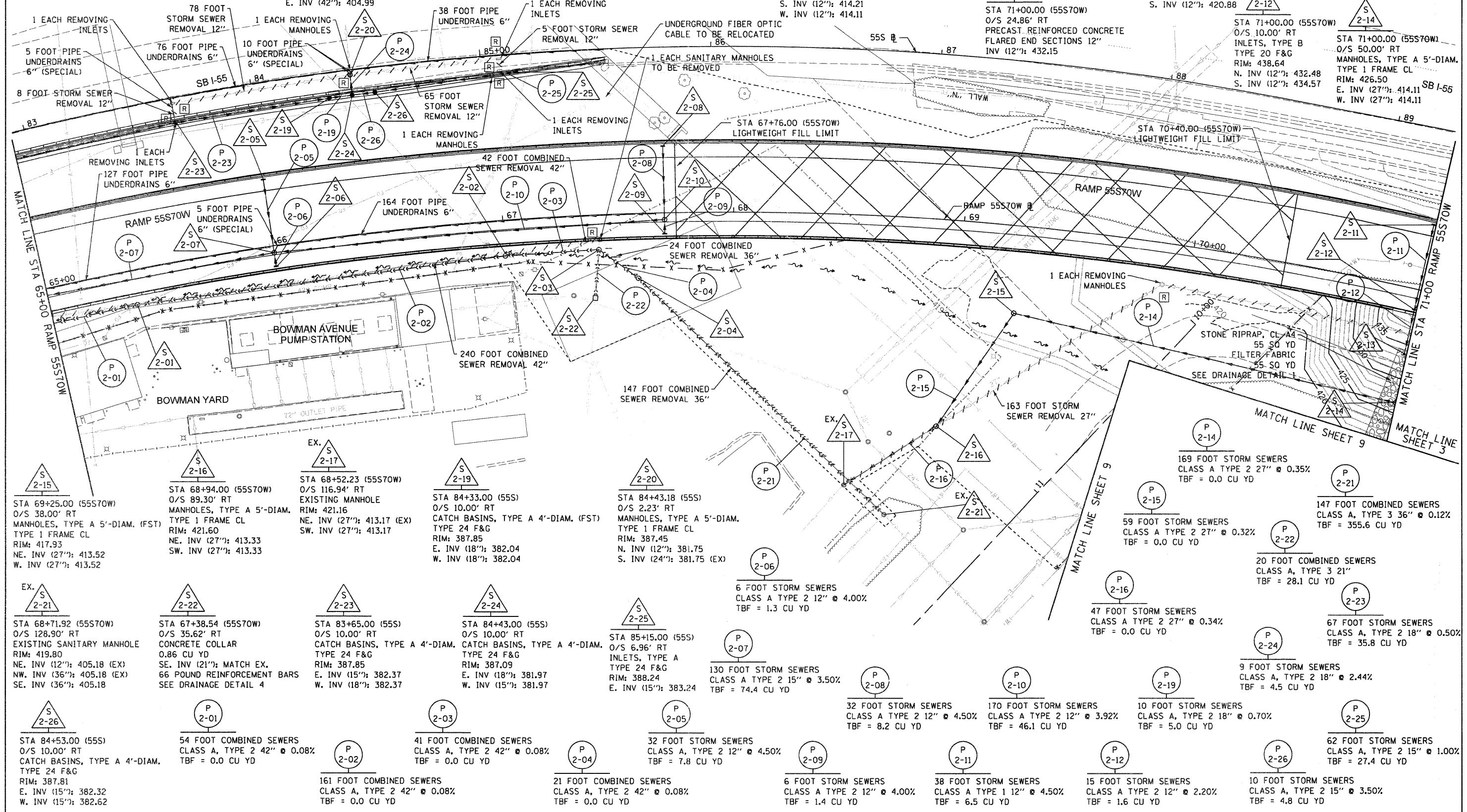
S 2-07
 STA 66+00.00 (55S70W)
 O/S 3.00' RT
 MANHOLES, TYPE A 4'-DIAM.
 TYPE 1 FRAME CL
 RIM: 419.07
 N. INV (12''): 414.21
 E. INV (15''): 412.86
 S. INV (12''): 414.21
 W. INV (12''): 414.11

S 2-08
 STA 67+70.00 (55S70W)
 O/S 30.00' LT
 INLETS, TYPE B
 TYPE 20 F&G
 RIM: 427.08
 N. INV (12''): 422.32

S 2-09
 STA 67+70.00 (55S70W)
 O/S 10.00' RT
 INLETS, TYPE B
 TYPE 20 F&G
 RIM: 425.44
 S. INV (12''): 421.12

S 2-10
 STA 67+70.00 (55S70W)
 O/S 3.00' RT
 MANHOLES, TYPE A 4'-DIAM.
 TYPE 1 FRAME CL
 RIM: 425.81
 N. INV (12''): 420.88
 E. INV (12''): 420.78
 S. INV (12''): 420.88

S 2-11
 STA 71+00.00 (55S70W)
 O/S 30.00' LT
 INLETS, TYPE B
 TYPE 20 F&G
 RIM: 440.28
 N. INV (12''): 436.28



S 2-15
 STA 69+25.00 (55S70W)
 O/S 38.00' RT
 MANHOLES, TYPE A 5'-DIAM. (FST)
 TYPE 1 FRAME CL
 RIM: 417.93
 NE. INV (27''): 413.52
 W. INV (27''): 413.52

S 2-16
 STA 68+94.00 (55S70W)
 O/S 89.30' RT
 MANHOLES, TYPE A 5'-DIAM.
 TYPE 1 FRAME CL
 RIM: 421.60
 NE. INV (27''): 413.33
 SW. INV (27''): 413.33

EX. S 2-17
 STA 68+52.23 (55S70W)
 O/S 116.94' RT
 EXISTING MANHOLE
 RIM: 421.16
 NE. INV (27''): 413.17 (EX)
 SW. INV (27''): 413.17

S 2-19
 STA 84+33.00 (55S)
 O/S 10.00' RT
 CATCH BASINS, TYPE A 4'-DIAM. (FST)
 TYPE 24 F&G
 RIM: 387.85
 E. INV (18''): 382.04
 W. INV (18''): 382.04

S 2-20
 STA 84+43.18 (55S)
 O/S 2.23' RT
 MANHOLES, TYPE A 5'-DIAM.
 TYPE 1 FRAME CL
 RIM: 387.45
 N. INV (12''): 381.75
 S. INV (24''): 381.75 (EX)

EX. S 2-21
 STA 68+71.92 (55S70W)
 O/S 128.90' RT
 EXISTING SANITARY MANHOLE
 RIM: 419.80
 NE. INV (12''): 405.18 (EX)
 NW. INV (36''): 405.18 (EX)
 SE. INV (36''): 405.18

S 2-22
 STA 67+38.54 (55S70W)
 O/S 35.62' RT
 CONCRETE COLLAR
 0.86 CU YD
 SE. INV (21''): MATCH EX.
 66 POUND REINFORCEMENT BARS
 SEE DRAINAGE DETAIL 4

S 2-23
 STA 83+65.00 (55S)
 O/S 10.00' RT
 CATCH BASINS, TYPE A 4'-DIAM.
 TYPE 24 F&G
 RIM: 387.09
 E. INV (15''): 382.37
 W. INV (18''): 382.37

S 2-24
 STA 84+43.00 (55S)
 O/S 10.00' RT
 CATCH BASINS, TYPE A 4'-DIAM.
 TYPE 24 F&G
 RIM: 387.09
 E. INV (18''): 381.97
 W. INV (15''): 381.97

S 2-25
 STA 85+15.00 (55S)
 O/S 6.96' RT
 INLETS, TYPE A
 TYPE 24 F&G
 RIM: 388.24
 E. INV (15''): 383.24

S 2-26
 STA 84+53.00 (55S)
 O/S 10.00' RT
 CATCH BASINS, TYPE A 4'-DIAM.
 TYPE 24 F&G
 RIM: 387.81
 E. INV (15''): 382.32
 W. INV (15''): 382.62

P 2-01
 54 FOOT COMBINED SEWERS
 CLASS A, TYPE 2 42" @ 0.08%
 TBF = 0.0 CU YD

P 2-02
 41 FOOT COMBINED SEWERS
 CLASS A, TYPE 2 42" @ 0.08%
 TBF = 0.0 CU YD

P 2-03
 161 FOOT COMBINED SEWERS
 CLASS A, TYPE 2 42" @ 0.08%
 TBF = 0.0 CU YD

P 2-04
 21 FOOT COMBINED SEWERS
 CLASS A, TYPE 2 42" @ 0.08%
 TBF = 0.0 CU YD

P 2-05
 32 FOOT STORM SEWERS
 CLASS A, TYPE 2 12" @ 4.50%
 TBF = 7.8 CU YD

P 2-06
 6 FOOT STORM SEWERS
 CLASS A TYPE 2 12" @ 4.00%
 TBF = 1.3 CU YD

P 2-07
 130 FOOT STORM SEWERS
 CLASS A TYPE 2 15" @ 3.50%
 TBF = 74.4 CU YD

P 2-08
 32 FOOT STORM SEWERS
 CLASS A TYPE 2 12" @ 4.50%
 TBF = 8.2 CU YD

P 2-09
 170 FOOT STORM SEWERS
 CLASS A TYPE 2 12" @ 3.92%
 TBF = 46.1 CU YD

P 2-10
 10 FOOT STORM SEWERS
 CLASS A, TYPE 2 18" @ 0.70%
 TBF = 5.0 CU YD

USER NAME = HensaoC	DESIGNED - KLK	REVISED -	STATE OF ILLINOIS DEPARTMENT OF TRANSPORTATION	DRAINAGE & UTILITY PLAN RAMP 55S70W		F.A.I. R.T.E. 70	SECTION 82-1-B-1	COUNTY ST. CLAIR	TOTAL SHEETS 319	SHEET NO. 59	
PLOT SCALE = 40.0000' / 1"	CHECKED - EEE	REVISED -		SCALE: 1" = 20'	SHEET NO. 2 OF 10 SHEETS	STA. 65+00 TO STA. 71+00	FED. ROAD DIST. NO.	ILLINOIS FED. AID PROJECT	CONTRACT NO. 76C75		
PLOT DATE = 0DATE\$	DATE - 3-30-11	REVISED -									

FILE NAME = P:\P60046629\760_CAD\901_Drawings\76C75_Contract\Sheet\Civil\Drainage\0817-76C75-shd-draw-02.dgn