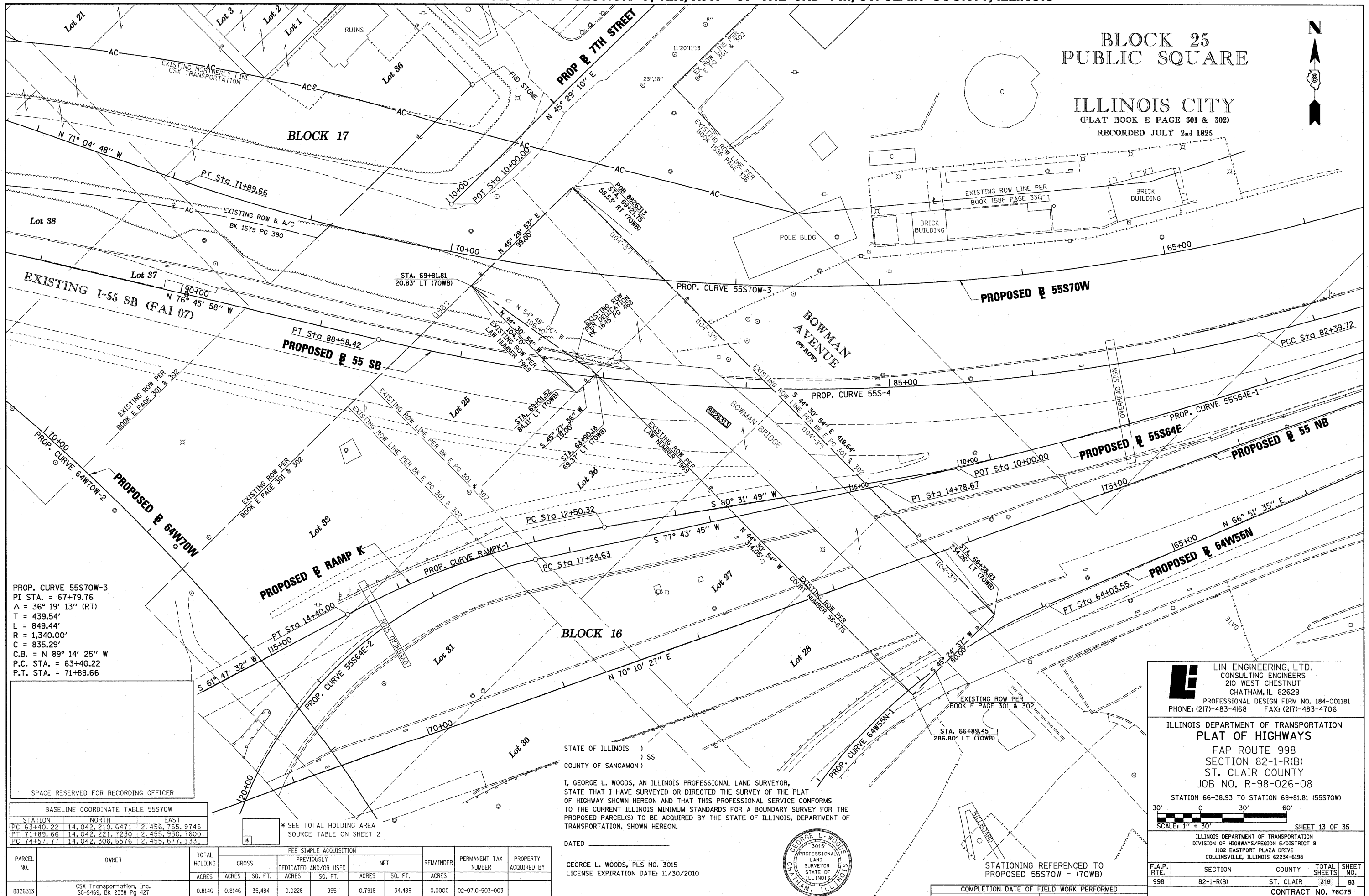


BLOCK 25
PUBLIC SQUARE

ILLINOIS CITY
(PLAT BOOK E PAGE 301 & 302)
RECORDED JULY 2nd 1825



PROP. CURVE 55S70W-3
PI STA. = 67+79.76
Δ = 36° 19' 13" (RT)
T = 439.54'
L = 849.44'
R = 1,340.00'
C = 835.29'
C.B. = N 89° 14' 25" W
P.C. STA. = 63+40.22
P.T. STA. = 71+89.66

SPACE RESERVED FOR RECORDING OFFICER

BASELINE COORDINATE TABLE 55S70W

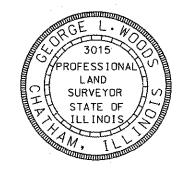
STATION	NORTH	EAST
PC 63+40.22	14,042,210.6471	2,456,765.9746
PT 71+89.66	14,042,221.7230	2,455,930.7600
PC 74+57.77	14,042,308.6576	2,455,677.1331

PARCEL NO.	OWNER	TOTAL HOLDING ACRES	FEE SIMPLE ACQUISITION				REMAINDER ACRES	PERMANENT TAX NUMBER	PROPERTY ACQUIRED BY		
			GROSS ACRES	PREVIOUSLY DEDICATED AND/OR USED ACRES	NET ACRES	SO. FT.					
8826313	CSX Transportation, Inc. SC-5469, Bk 2538 Pg 427 Bk 2538 Pg 427, Bk 2538 Pg 430, Bk 2650 Pg 1602	0.8146	0.8146	35,484	0.0228	995	0.7918	34,489	0.0000	02-07.0-503-003	

STATE OF ILLINOIS)
) SS
COUNTY OF SANGAMON)

I, GEORGE L. WOODS, AN ILLINOIS PROFESSIONAL LAND SURVEYOR, STATE THAT I HAVE SURVEYED OR DIRECTED THE SURVEY OF THE PLAT OF HIGHWAY SHOWN HEREON AND THAT THIS PROFESSIONAL SERVICE CONFORMS TO THE CURRENT ILLINOIS MINIMUM STANDARDS FOR A BOUNDARY SURVEY FOR THE PROPOSED PARCEL(S) TO BE ACQUIRED BY THE STATE OF ILLINOIS, DEPARTMENT OF TRANSPORTATION, SHOWN HEREON.

DATED _____
GEORGE L. WOODS, PLS NO. 3015
LICENSE EXPIRATION DATE: 11/30/2010



LI LIN ENGINEERING, LTD.
CONSULTING ENGINEERS
210 WEST CHESTNUT
CHATHAM, IL 62629
PROFESSIONAL DESIGN FIRM NO. 184-001181
PHONE: (217)-483-4168 FAX: (217)-483-4706

ILLINOIS DEPARTMENT OF TRANSPORTATION
PLAT OF HIGHWAYS
FAP ROUTE 998
SECTION 82-1-R(B)
ST. CLAIR COUNTY
JOB NO. R-98-026-08

STATIONING REFERENCED TO PROPOSED 55S70W = (70WB)
STATION 66+38.93 TO STATION 69+81.81 (55S70W)
SCALE: 1" = 30'

F.A.P. RTE.	SECTION	COUNTY	TOTAL SHEETS	SHEET NO.
998	82-1-R(B)	ST. CLAIR	318	93

COMPLETION DATE OF FIELD WORK PERFORMED
LAND SURVEY: OCT./2009 ROW STAKING: OCT./2009

ILLINOIS DEPARTMENT OF TRANSPORTATION
DIVISION OF HIGHWAYS/REGION 5/DISTRICT 8
1102 EASTPORT PLAZA DRIVE
COLLINSVILLE, ILLINOIS 62234-6198

FED. ROAD DIST. NO. ILLINOIS FED. AID PROJECT CONTRACT NO. 76C75

PLOT DATE = 10/19/2009
FILE NAME = #FILE#
PLOT SCALE = #SCALE#
USER NAME = #USER#