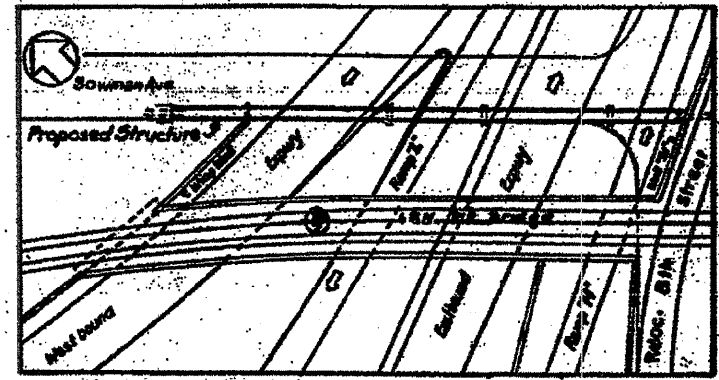
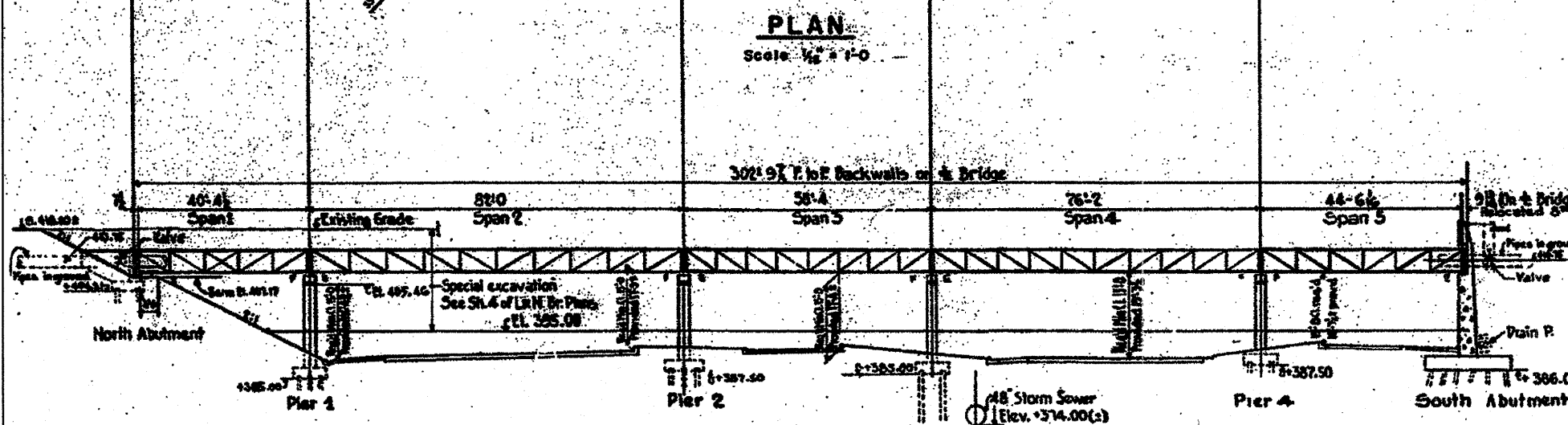
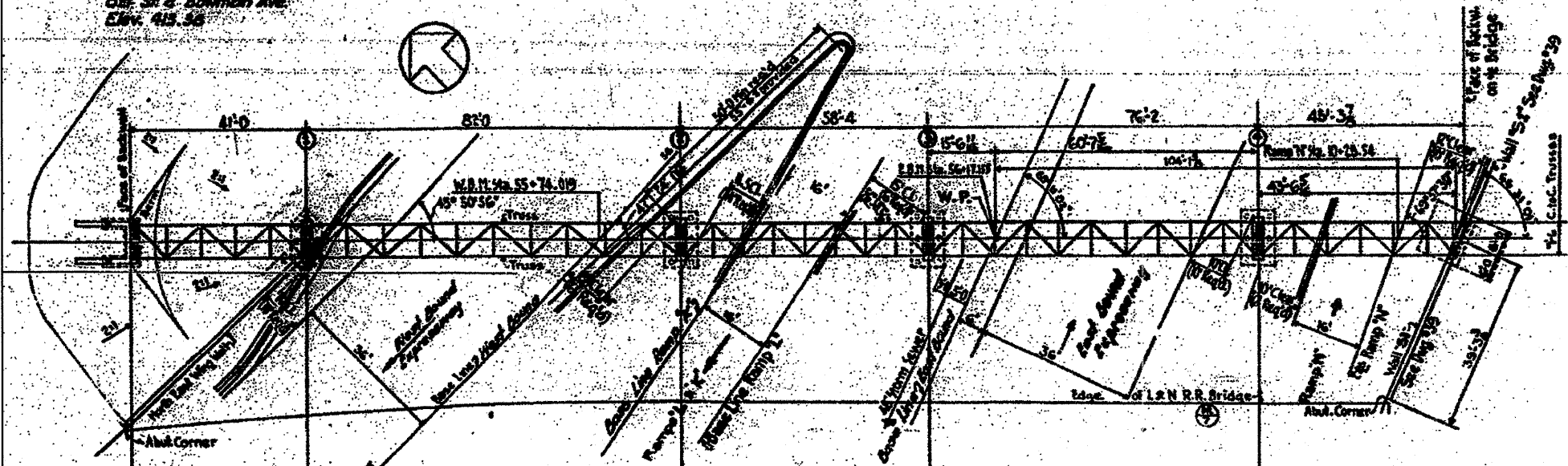


GENERAL SHEET NO.	SECTION	COUNTY	TOTAL SHEETS	SHEET NO.
E.A.I.-70	82-1-B-1	ST. CLAIR	319	114
FED. ROAD DIV. NO. 7 ILLINOIS PROJECT				

S.M. 15
East side of Bowman Ave.
South side of 8th St.
Iron pipe on S.E. corner of
8th St. & Bowman Ave.
Elev. 415.56



GENERAL NOTES

MATERIAL & WORKMANSHIP
State of Illinois "Standard Specifications for Road and Bridge Construction" adopted January 2, 1958.

DESIGN
Superstructure: A.I.S.C. "Specification for the Design, Fabrication and Erection of Structural Steel for Buildings" Revised June, 1949
Substructure: A.A.S.H.O. "Standard Specifications for Highway Bridges - 1957"

LOADING
Per foot of Bridge: Dead 2.11, Wind 0.2'

CONCRETE
Class "C" concrete shall be used throughout.

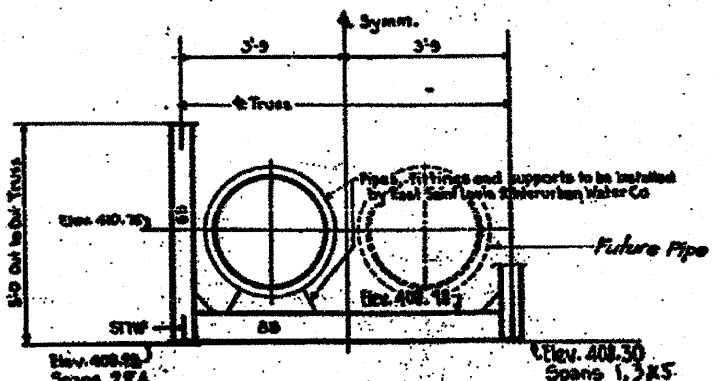
DESIGN UNIT STRESSES
Concrete: $E = 4,000,000$ psi, $f_c = 20,000$ psi, $n = 12$, Footings $v = 75$ psi, Substructure with Earth Pressure: $f_c = 1000$ psi.
Structural Steel $f_s = 20,000$ psi.

PILES
The contractor shall drive 6 test piles in permanent locations as directed by the Engineer, before ordering remainder of piles. One test pile shall be located under each Abutment and Pier. All piles shall be creosoted.

SUPERSTRUCTURE
To be all shopwelded. A.S.T.M. designation A373 steel shall be used in all members designed to carry stress. Shop to tackweld temporary bracing between top chords of trusses. This bracing to remain in place until field erection of bridge is complete.

PAINT
Except as otherwise provided all structural steel shall receive one shop coat of red lead paint and two field coats of aluminum paint. See Articles 56.1 to 56.5 inclusive of the Standard Specifications. All paint shall be furnished and applied by the Contractor involved.

WATERPROOFING
The following surfaces of the bridge shall be waterproofed: Back of backwall and backs of wingwalls at North Abutment, and back of South Abutment. Waterproofing shall be done in accordance with Article 54.21 of the Standard Specifications.



TOTAL BILL OF MATERIAL FOR PIPE BRIDGE

UNIT	DESCRIPTION	SUPER-STRUCTURE	SUB-STRUCTURE	TOTAL
CY	CLASS "C" EXCAVATION FOR STRUCTURES		368	368
CY	CLASS "C" CONCRETE		127.0	127.0
LB	REINFORCEMENT BARS		14850	14850
LB	STRUCTURAL STEEL	36840		36840
EA	TEST PILES (CREOSOTED)		6	6
LP	FURNISHING CREOSOTED PILE (MID)		1269	1269
LP	DRIVING TIMBER PILES		1269	1269
LP	6" PERF. CORR GALV METAL PIPE	12		12
LP	CHAIN LINK FENCE	12		12
CY	PERVIOUS GRANULAR EMBANKMENT		39	39

STATE OF ILLINOIS
DEPARTMENT OF PUBLIC WORKS & BLDGS.
DIVISION OF HIGHWAYS
EAST ST. LOUIS & INTERURBAN WATER CO.
EAST ST. LOUIS EXPRESSWAY
BRIDGE FOR 2 30" WATER PIPES
OVER E.A.I.-07
GENERAL PLAN
H. W. LOCKNER, INC.
ENGINEERS
CHICAGO, ILLINOIS. SHEET NO. 29

Designed by J.V.
Drawn by J.V.
Checked by H.H.

USER NAME = pimsarno	DESIGNED - CRH	REVISED -	STATE OF ILLINOIS DEPARTMENT OF TRANSPORTATION	EXISTING BRIDGE PLAN - 30" WATER PIPES OVER I-554-70	F.A.I. RTE. 70	SECTION 82-1-B-1	COUNTY ST. CLAIR	TOTAL SHEETS 319	SHEET NO. 114
PLOT SCALE = 20,000 / in.	DRAWN - CRH	REVISED -	SCALE: NONE	SHEET NO. 1 OF 2 SHEETS STA. TO STA.	FED. ROAD DIST. NO.	ILLINOIS	FED. AID PROJECT	CONTRACT NO. 76C75	
PLOT DATE = #DATE#	CHECKED - DBM	REVISED -							
	DATE - 3-18-11	REVISED -							