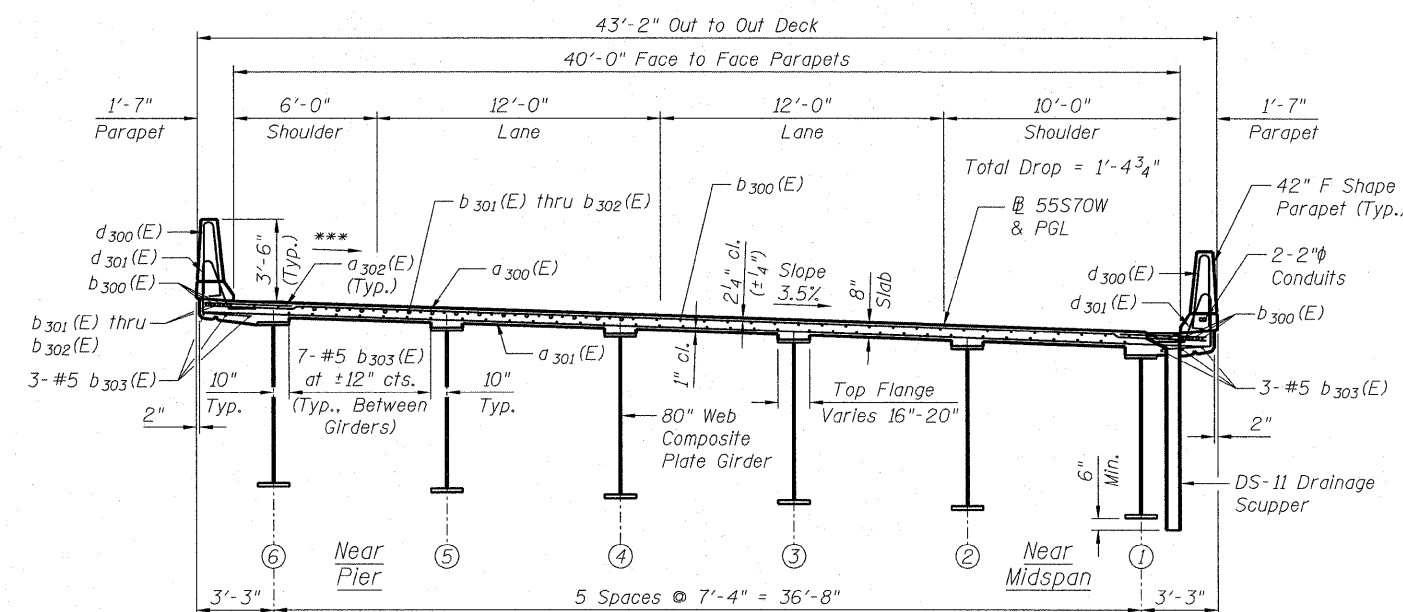


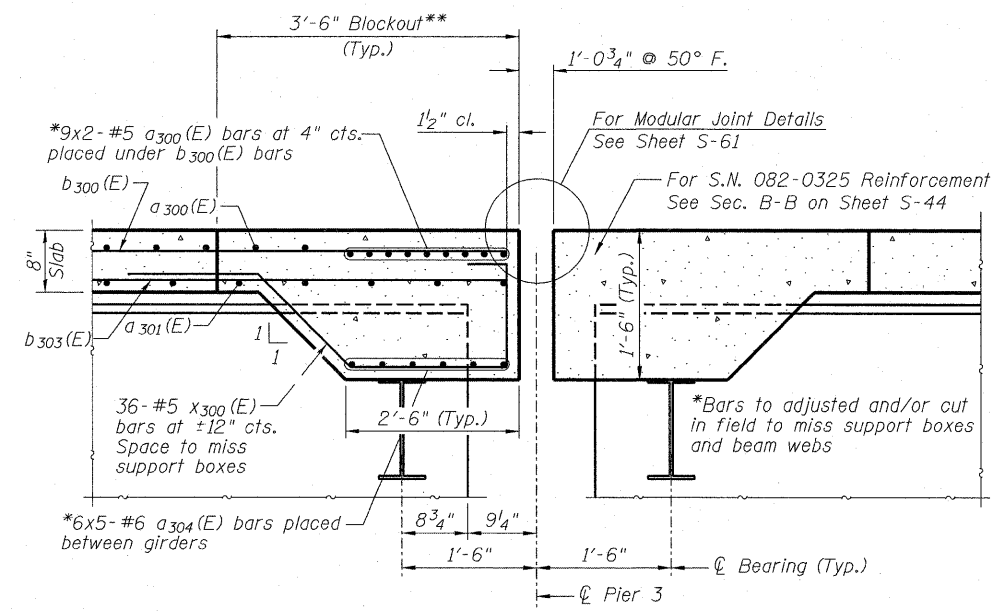
**SUPERSTRUCTURE  
BILL OF MATERIAL**

Bar	No.	Size	Length	Shape
a <sub>300</sub> (E)	2162	#5	23'-1"	—
a <sub>301</sub> (E)	1306	#5	23'-0"	—
a <sub>302</sub> (E)	2134	#6	6'-6"	—
a <sub>303</sub> (E)	16	#5	1'-6"	—
a <sub>304</sub> (E)	30	#6	7'-0"	—
a <sub>305</sub> (E)	5	#5	7'-0"	—
a <sub>306</sub> (E)	15	#5	8'-2"	—
b <sub>300</sub> (E)	893	#5	28'-10"	—
b <sub>301</sub> (E)	176	#6	28'-6"	—
b <sub>302</sub> (E)	220	#6	25'-8"	—
b <sub>303</sub> (E)	820	#5	27'-8"	—
d <sub>300</sub> (E)	1063	#5	6'-10"	—
d <sub>301</sub> (E)	1063	#5	7'-9"	—
d <sub>302</sub> (E)	3	#6	5'-1"	—
d <sub>303</sub> (E)	6	#6	8'-11"	—
e <sub>300</sub> (E)	7	#4	16'-5"	—
e <sub>301</sub> (E)	112	#4	18'-8"	—
e <sub>302</sub> (E)	64	#4	19'-8"	—
e <sub>303</sub> (E)	112	#4	17'-8"	—
e <sub>304</sub> (E)	7	#4	17'-10"	—
e <sub>305</sub> (E)	42	#4	19'-2"	—
e <sub>306</sub> (E)	7	#4	17'-10"	—
e <sub>307</sub> (E)	7	#4	18'-8"	—
e <sub>308</sub> (E)	7	#4	15'-0"	—
e <sub>309</sub> (E)	7	#4	15'-3"	—
e <sub>310</sub> (E)	4	#4	29'-5"	—
e <sub>311</sub> (E)	6	#4	28'-8"	—
e <sub>312</sub> (E)	5	#4	28'-7"	—
e <sub>313</sub> (E)	11	#4	28'-2"	—
e <sub>314</sub> (E)	4	#4	29'-1"	—
e <sub>315</sub> (E)	4	#8	31'-9"	—
e <sub>316</sub> (E)	8	#8	19'-8"	—
e <sub>317</sub> (E)	6	#8	31'-4"	—
e <sub>318</sub> (E)	5	#8	31'-2"	—
e <sub>319</sub> (E)	5	#8	30'-9"	—
e <sub>320</sub> (E)	5	#8	36'-0"	—
e <sub>321</sub> (E)	4	#8	31'-6"	—
x <sub>300</sub> (E)	72	#5	6'-5"	—
Reinforcement Bars, Epoxy Coated	Pound		196,060	
Concrete Superstructure	Cu. Yds.		704.8	
Bridge Deck Grooving	Sq. Yd.		2,052	
Protective Coat	Sq. Yd.		2,610	
Conduit Embedded in Structure, 2" Dia. PVC	Foot		840	

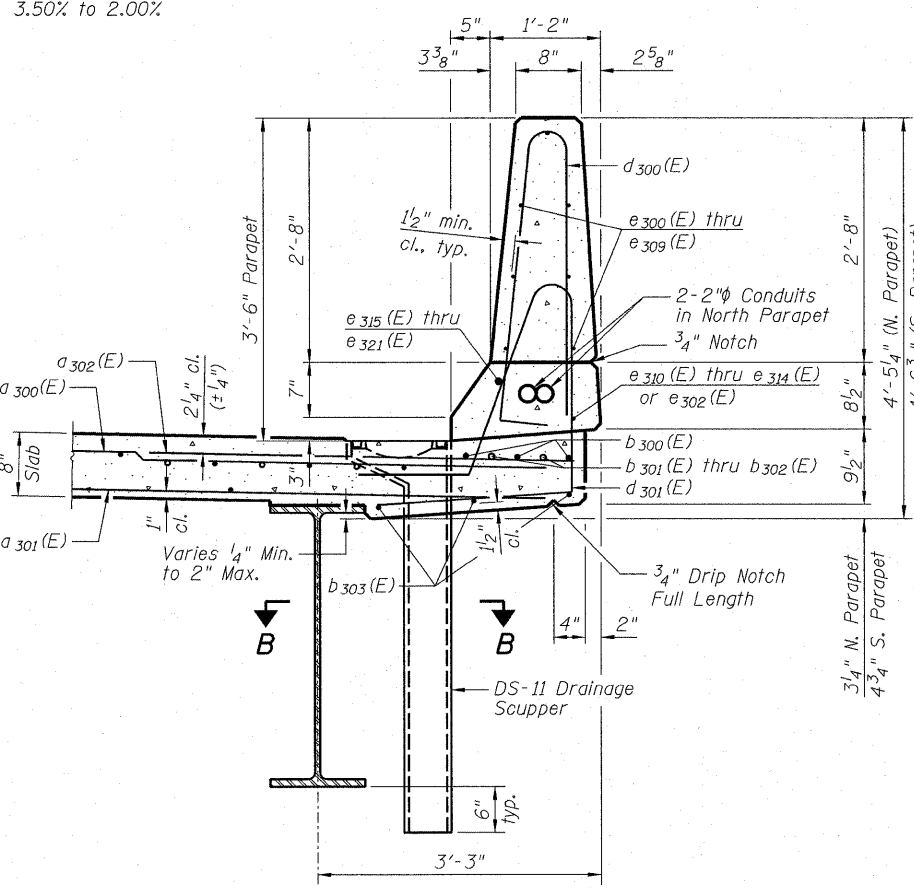


**CROSS SECTION - S.N. 082-0323**  
Looking Upstation  
(Dimensions Radial From 55S70W)

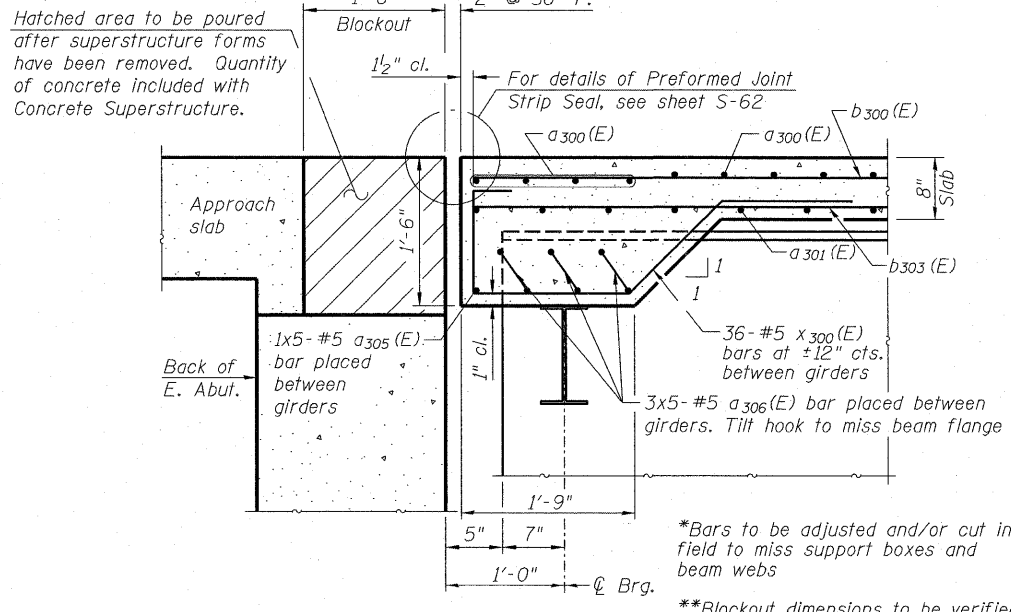
\*\*\*Between Sta. 78+91.16 to Sta. 79+09.01 Shoulder Cross Slope varies from 3.50% to 2.00%



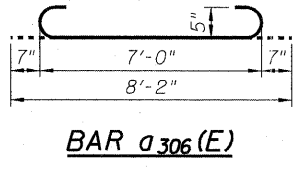
**SECTION C-C**



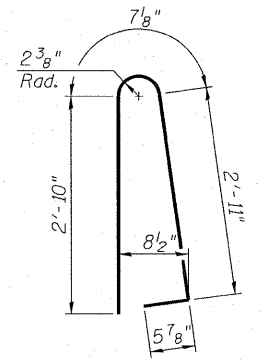
**SECTION THRU PARAPET**



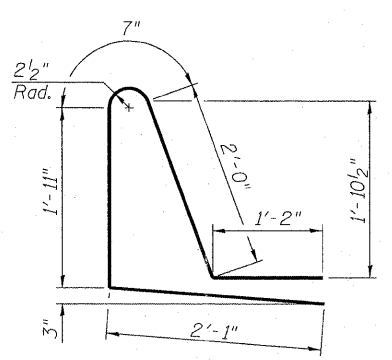
**SECTION D-D**



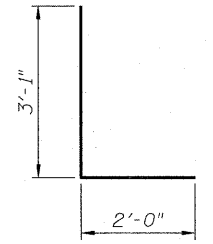
**BAR a<sub>306</sub>(E)**



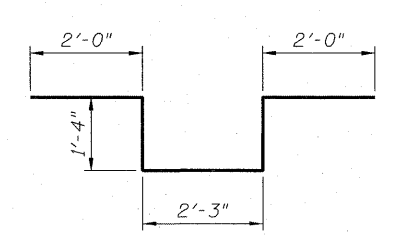
**BAR d<sub>300</sub>(E)**



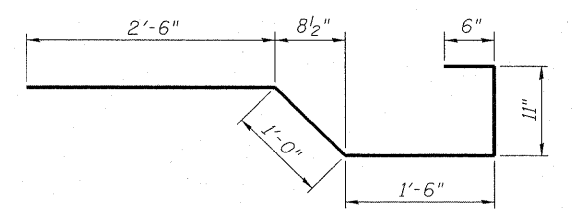
**BAR d<sub>301</sub>(E)**



**BAR d<sub>302</sub>(E)**



**BAR d<sub>303</sub>(E)**



**BAR x<sub>300</sub>(E)**

**STATE OF ILLINOIS  
DEPARTMENT OF TRANSPORTATION**

**DECK CROSS SECTIONS - S.N. 082-0323  
I-70W OVER I-55, CSX & KCS RAILROADS**

F.A.I. RTE.	SECTION	COUNTY	TOTAL SHEETS	SHEET NO.
70	82-1-B-1	ST. CLAIR	319	161
S.N. 082-0323 & S.N. 082-0325			CONTRACT NO. 76C75	
FED. ROAD DIST. NO. [ILLINOIS] FED. AID PROJECT				

**AECOM**  
**ZROKA**  
Engineering

USER NAME = kritzem  
DESIGNED - JLA  
DRAWN - DAZ  
CHECKED - SAW  
DATE - 3-18-11

REVISD -  
REVISD -  
REVISD -  
REVISD -

SCALE: NONE  
SHEET NO. 5-46 OF 5-138 SHEETS STA. TO STA.

D:\R1-0820323-0820325-76C75-546-DeckCrossSections-0823.dgn