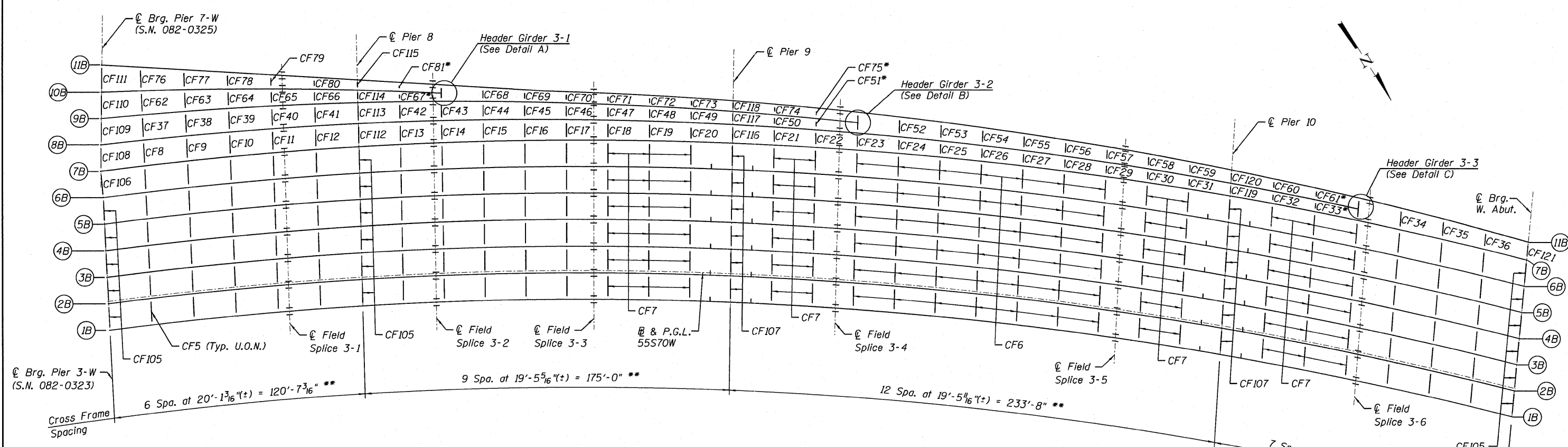
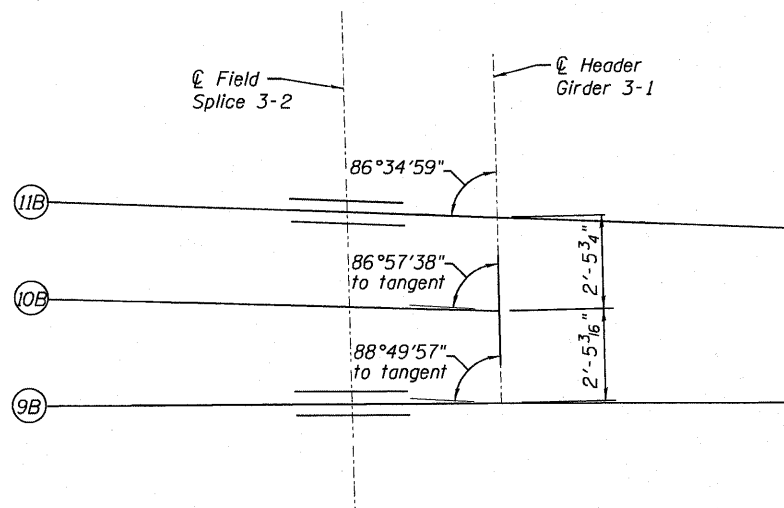


P:\66046697\988_CAD\988_Drawing\76C75\Master_Console.dwg; Structural\082-0325\Sheet\5666\082-0325_76C75_FramingPlan_Units.dwg

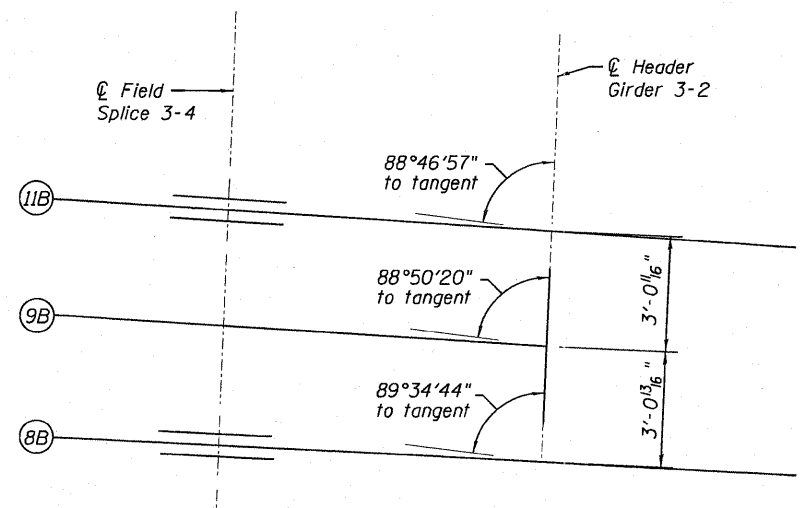


GIRDER FRAMING PLAN II - S.N. 082-0325 - UNIT 3

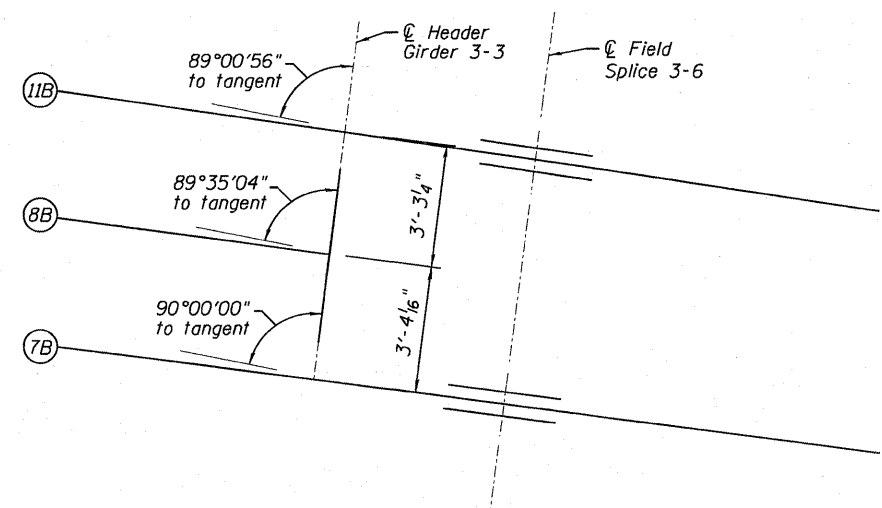
* Diagonals omitted (see Girder Cross Frame Details).
 ** Dimension measured along @ 55S70W.



DETAIL A
 Header Girder 3-1
 (See Sheet S-73 for Details)



DETAIL B
 Header Girder 3-2
 (See Sheet S-73 for Details)



DETAIL C
 Header Girder 3-3
 (See Sheet S-73 for Details)

- Notes:**
1. See Sheet S-67 for girder lengths and coordinates.
 2. See Sheets S-72 thru S-74 for girder elevations.
 3. See Sheets S-76 thru S-77 for camber & top of web elevations.
 4. See Sheet S-79 for moment tables & S-80 for reaction tables.
 5. See Sheet S-81 for girder bolted field splice details.
 6. See Sheet S-82 for girder cross frame details and erection notes.
 7. AASHTO M270 Grade 50 steel shall be used for all flanges, webs, stiffeners, splice plates, and cross frames, unless otherwise noted.
 8. Load carrying components designated "NTR" shall conform to the Supplemental Requirements for Notch Toughness (Zone 2).
 9. Girder spacings and cross frame orientations are radial to the @ 55S70W, except at @ Brg. for Pier 7-W & W. Abut. supports where these are parallel to the respective centerline of supports.



USER NAME = bhata	DESIGNED - CLS	REVISED -
PLLOT SCALE = @2' / 1 in.	DRAWN - DD	REVISED -
PLLOT DATE = @DATE@	CHECKED - CHY	REVISED -
	DATE - 03/18/2011	REVISED -

**STATE OF ILLINOIS
 DEPARTMENT OF TRANSPORTATION**

**GIRDER FRAMING PLAN II - S.N. 082-0325 - UNIT 3
 I-70W OVER I-55, CSX & KCS RAILROADS**

SCALE: NONE SHEET NO. S-68 OF S-138 SHEETS STA. TO STA.

F.A.I. RTE. 70	SECTION 82-1-B-1	COUNTY ST. CLAIR	TOTAL SHEETS 319	SHEET NO. 183
S.N. 082-0323 & S.N. 082-0325		CONTRACT NO. 76C75		
FED. ROAD DIST. NO.		ILLINOIS FED. AID PROJECT		