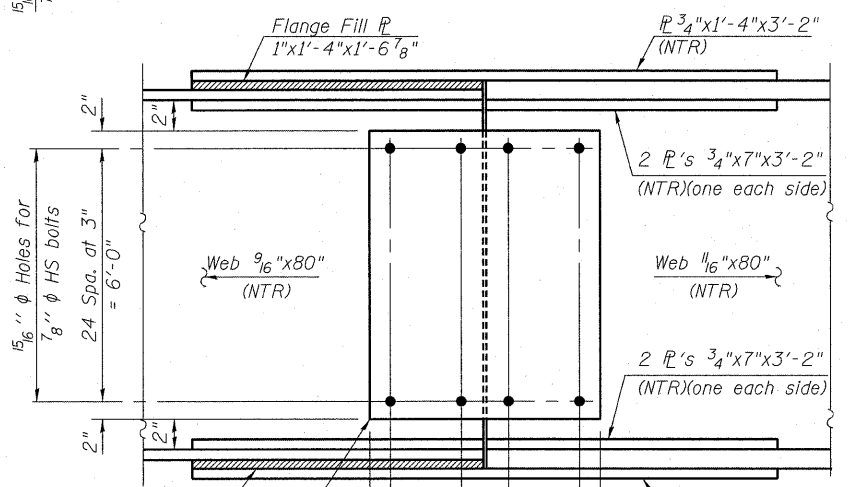
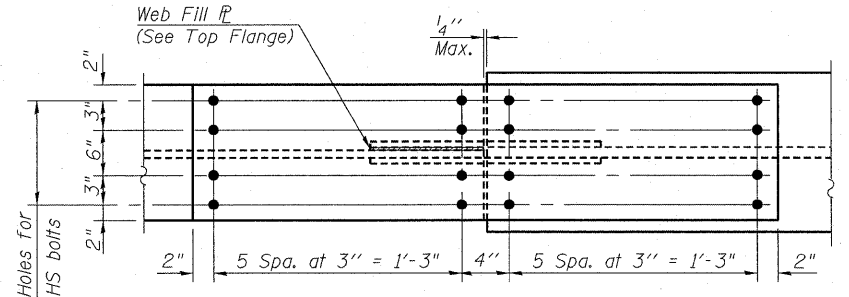


TOP FLANGE



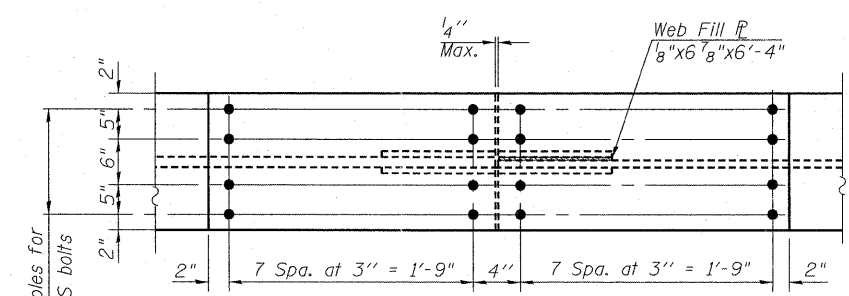
ELEVATION



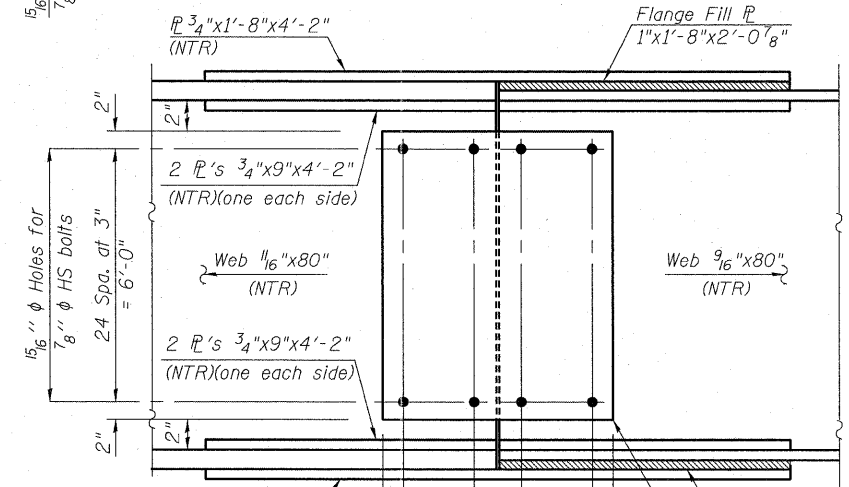
BOTTOM FLANGE

**SPLICES 1-1 THRU 1-3, 2-1 THRU 2-6,
3-1 THRU 3-3, 3-6, & 4-1 THRU 4-4**

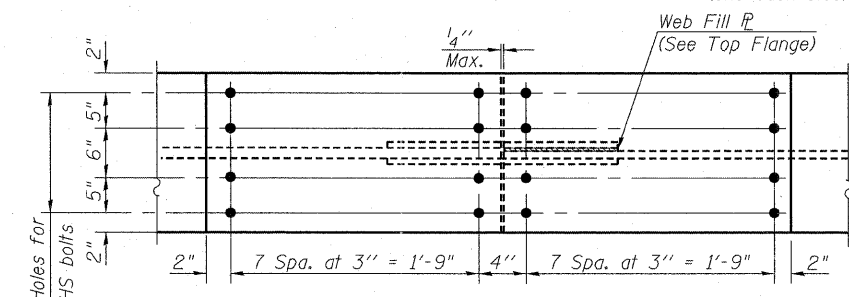
(117 Required)



TOP FLANGE



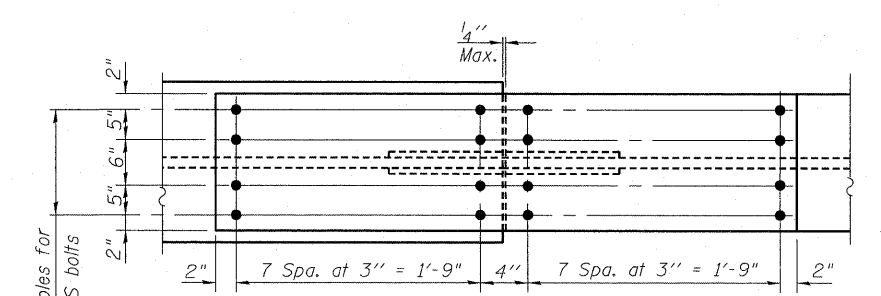
ELEVATION



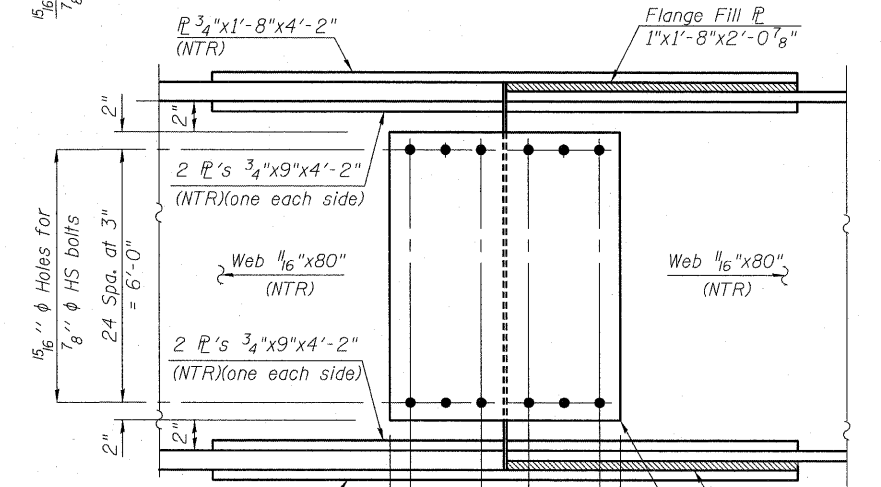
BOTTOM FLANGE

SPLICE 1-4

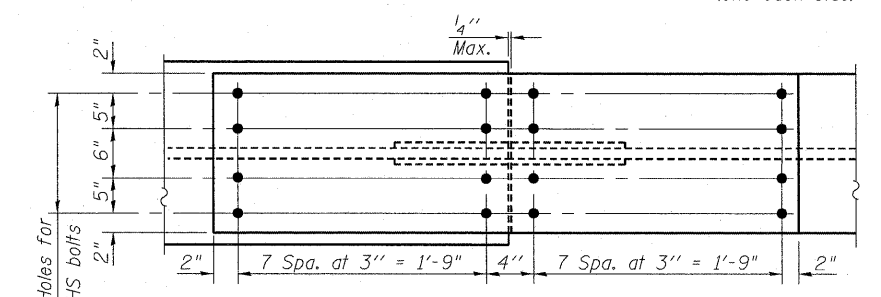
(6 Required)



TOP FLANGE



ELEVATION



BOTTOM FLANGE

SPLICES 3-4 & 3-5

(18 Required)

Notes:

1. See Sheets S-64 thru S-68 for location of bolted field splices.
2. AASHTO M270 Grade 50 steel shall be used for all splice plates, except fill plates which may be AASHTO M270 Grade 36 or 50.
3. Load carrying components designated "NTR" shall conform to the Supplemental Requirements for Notch Toughness (Zone 2), including all flange and web splice plates (except fill plates).
4. Fasteners shall be AASHTO M164 Type 1, mechanically galvanized bolts. Bolts 7/8 in. ϕ , holes 15/16 in. ϕ , unless otherwise noted. Design assumes threads in shear plane and Class A slip surface.
5. Shear connector studs shall not be placed on top of splice plates.
6. The Contractor is alerted that differences in web thickness across the splice create a slight misalignment of the webs that may need to be accounted for when detailing cross frames in shop drawings in order to properly control geometry and avoid any fit-up issues. It is recommended that the web fill plates always be detailed and installed on the same side of the web at rows of adjacent splices in order to minimize girder spacing differences at these locations.

P:\60804669\908_CAD\901_Drawing\76C75_Splce.dgn Master:Conrad\det\Structural\082-0323\Sheet\5081_082-0325_76C75_Splce.dgn



USER NAME = BhattA	DESIGNED - CLS	REVISED -
PLOT SCALE = 0.2" = 1' in.	DRAWN - JHR	REVISED -
PLOT DATE = #DATE#	CHECKED - CHY	REVISED -
	DATE - 03/18/2011	REVISED -

**STATE OF ILLINOIS
DEPARTMENT OF TRANSPORTATION**

**GIRDER BOLTED FIELD SPLICE DETAILS
I-70W OVER I-55, CSX & KCS RAILROADS**

SCALE: NONE SHEET NO. S-81 OF S-138 SHEETS STA. TO STA.

F.A.I. RTE. 70	SECTION 82-1-B-1	COUNTY ST. CLAIR	TOTAL SHEETS 319	SHEET NO. 196
S.N. 082-0323 & S.N. 082-0325		CONTRACT NO. 76C75		
FED. ROAD DIST. NO. [ILLINOIS] FED. AID PROJECT				