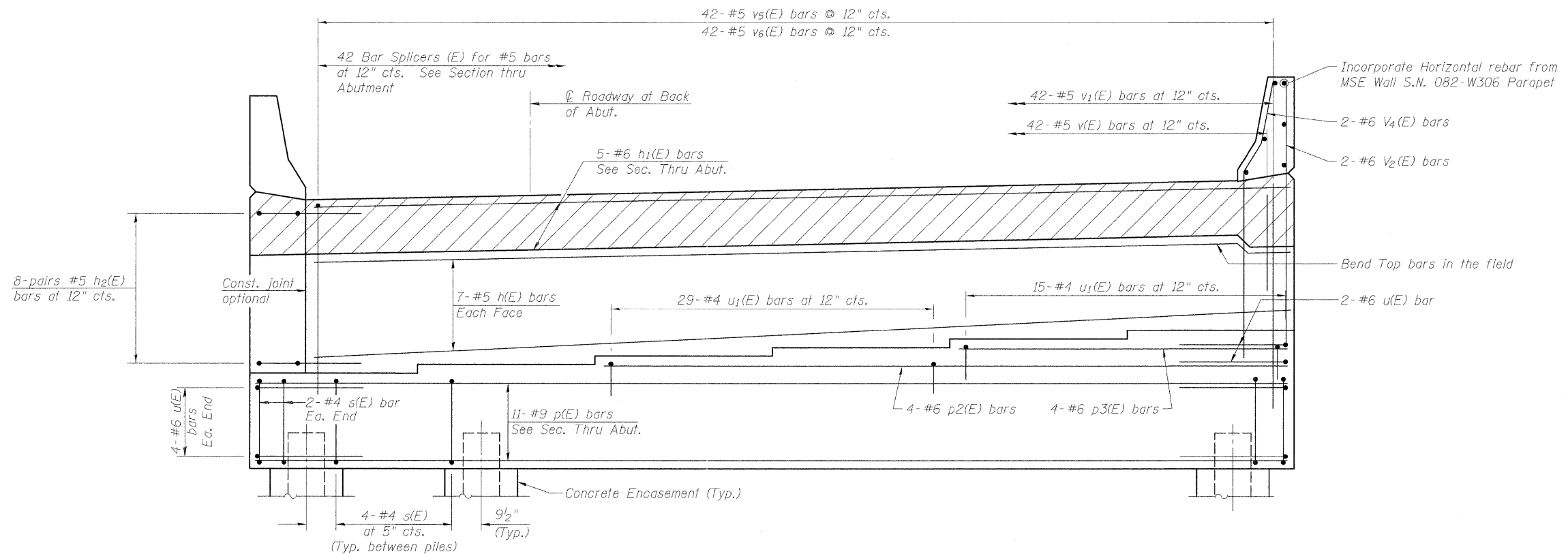


ELEVATION
(Looking East Showing Dimensions)



ELEVATION
(Looking East Showing Reinforcements)



USER NAME = BhattA	DESIGNED - DEV	REVISED -
PLOT SCALE = 0.1' / 1"	DRAWN - GF	REVISED -
PLOT DATE = #DATE#	CHECKED - ATB	REVISED -
	DATE - 05-02-11	REVISED -

STATE OF ILLINOIS
DEPARTMENT OF TRANSPORTATION

EAST ABUTMENT ELEVATIONS - S.N. 082-0323
I-70W OVER I-55, CSX & KCS RAILROADS

SCALE: NONE SHEET NO. S-94 OF S-138 SHEETS STA. TO STA.

F.A.I. RTE.	SECTION	COUNTY	TOTAL SHEETS	SHEET NO.
70	82-1-B-1	ST. CLAIR	319	209
S.N. 082-0323 & S.N. 082-0325		CONTRACT NO. 76C75		
FED. ROAD DIST. NO.		ILLINOIS FED. AID PROJECT		

P:\P0804656\A\9001_CAD\901_Drawing\76C000.Master_Consolidated\Structural\882-0323\Sheet\89\4_882-0323_76C75_EastAbutElev.dgn