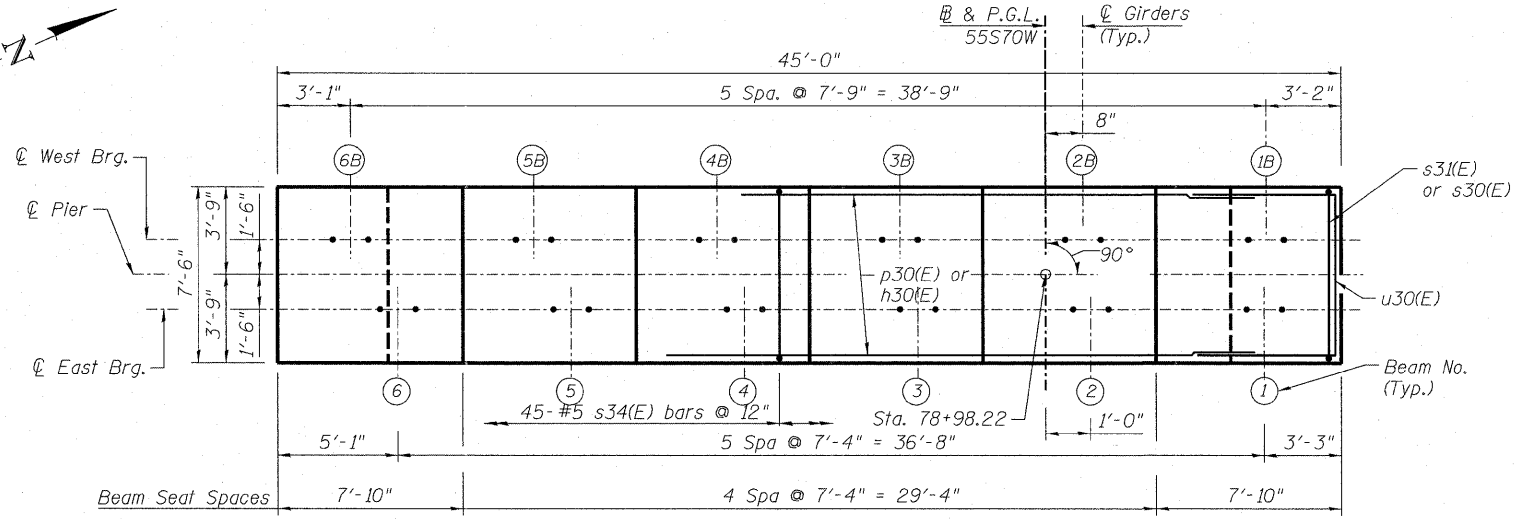


**NOTES:**

1. Space reinforcement in cap to miss anchor bolts.
2. Pour steps monolithically with cap.
3. For details of piles, see sheet S-122.
4. Bars indicated thus 20 x 3-#5 etc. indicates 20 lines of bars with 3 lengths per line.
5. #5 sp30(E) spiral, each column
  - 1) Provide 1/2" extra turns, shop welded together per AWS D1.4 top and bottom. Extend spiral 2" into pier cap & footing. Provide 4-#4 spacers or equivalent.
  - 2) When splicing spiral reinforcement is necessary, the spiral shall be provided with 1/2" extra turns at the ends to be spliced. These additional turns shall either be welded together according to AWS D1.4, or shall both terminate with a 135° standard hook.
6. For Anchor Bolt Details, see Sheet No. S-83 thru. S-92.
7. For Girder 1B thru. 6B shim plate details, see Sheet No. S-88.
8. For Sections A-A, B-B & C-C, see Sheet No. S-105.

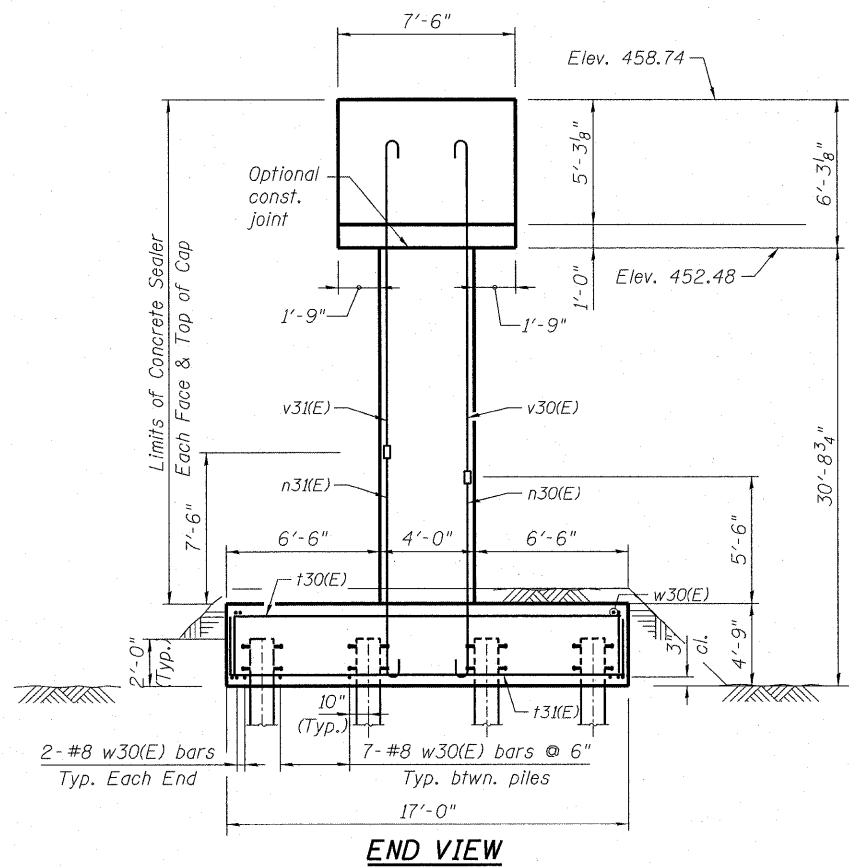
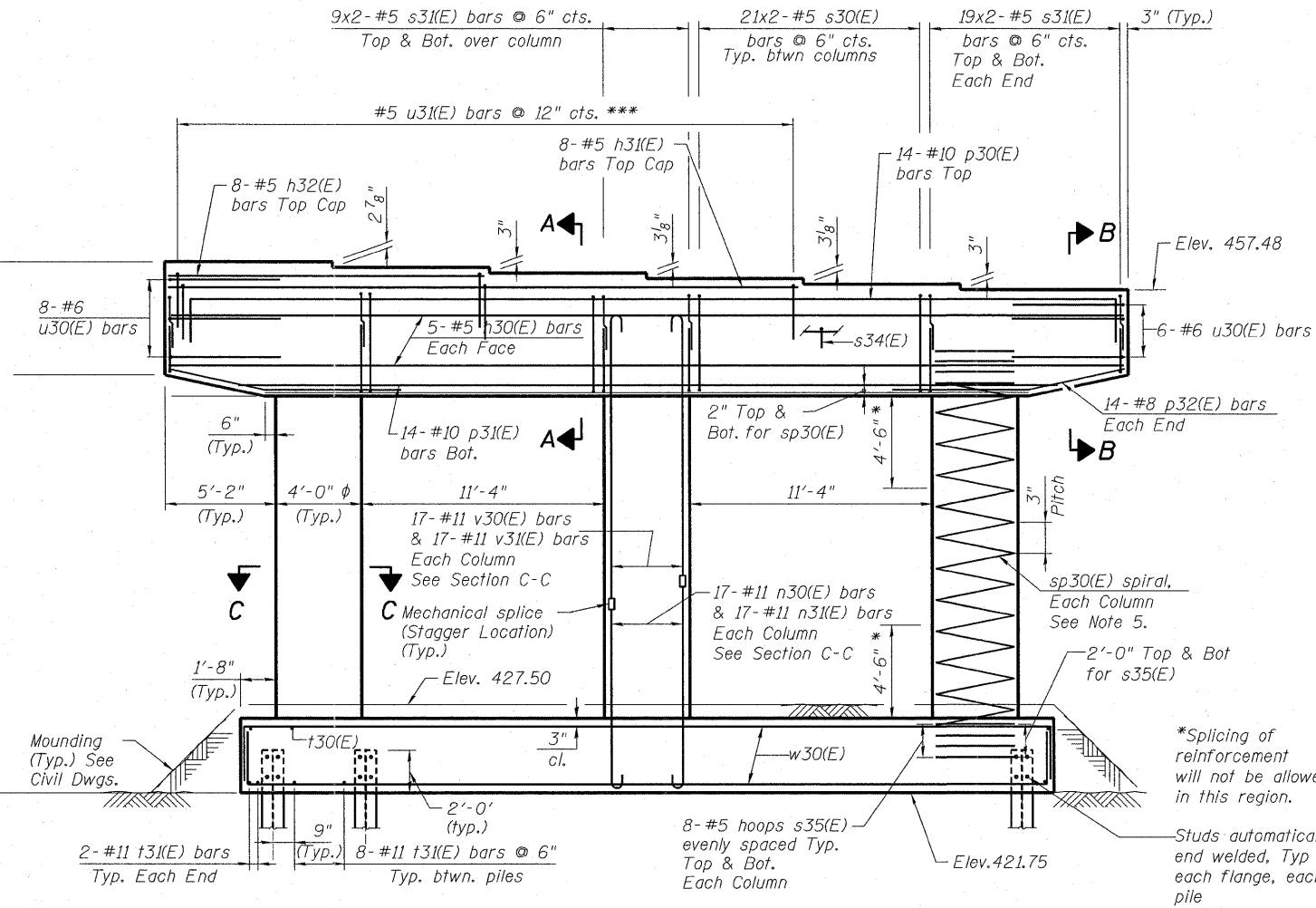
\*\*\*16-u31(E) bars match w/ h32(E) bars  
 30-u31(E) bars match w/ h31(E) bars  
 Adjust u31(E) bars in the Field to avoid conflict with Stirrups.



**TOP OF SEAT ELEVATION**

Beam No.	Seat Elev.
1 & 1B	457.48
2 & 2B	457.73
3 & 3B	457.99
4 & 4B	458.25
5 & 5B	458.50
6 & 6B	458.74

**TOP PLAN**



**END VIEW**

**ELEVATION**  
(Looking Upstation)

\*Splicing of reinforcement will not be allowed in this region.  
 Studs automatically end welded, Typ each flange, each pile

P:\66208\66208\988\_CAD\981\_Drawing\66208\Master\_Connected\Structure\082-0323\Sheet\SI04\_082-0323\_76C75\_Pier-3.dgn



USER NAME = Bhatta	DESIGNED - ATB	REVISED -
PLOT SCALE = 8x2 1/2" / 1"	DRAWN - PMM	REVISED -
PLOT DATE = #DATE#	CHECKED - ATB	REVISED -
	DATE - 03/18/2011	REVISED -

**STATE OF ILLINOIS**  
**DEPARTMENT OF TRANSPORTATION**

**PIER 3 - S.N. 082-0323**  
**I-70W OVER I-55, CSX & KCS RAILROADS**

SCALE: NONE SHEET NO. S-104 OF S-138 SHEETS STA. TO STA.

F.A.I. RTE.	SECTION	COUNTY	TOTAL SHEETS	SHEET NO.
70	82-1-B-1	ST. CLAIR	319	219
S.N. 082-0323 & S.N. 082-0325		CONTRACT NO. 76C75		
FED. ROAD DIST. NO. [ILLINOIS] FED. AID PROJECT				