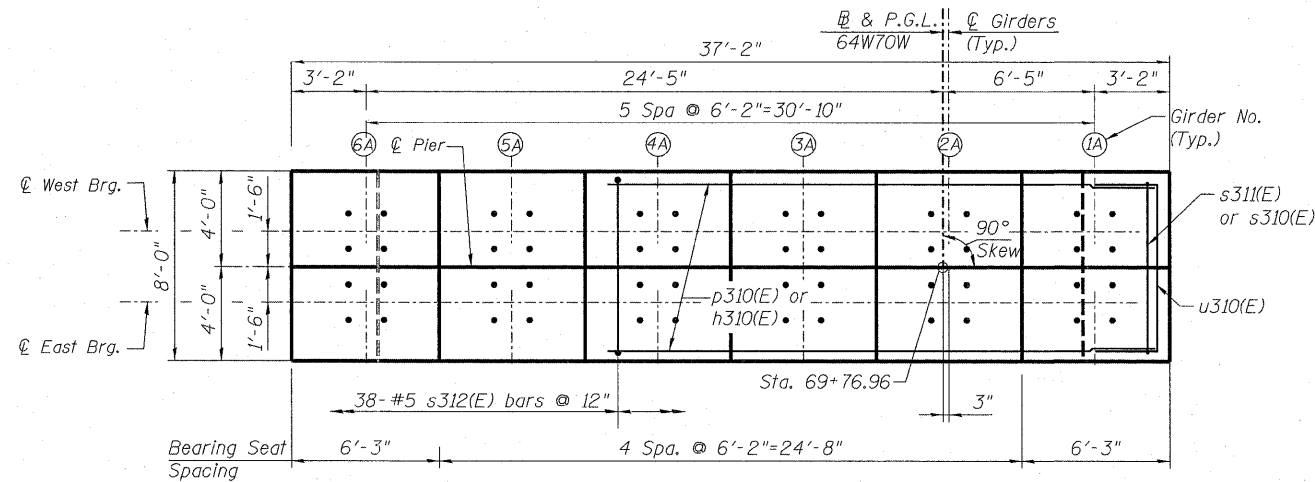


NOTES:

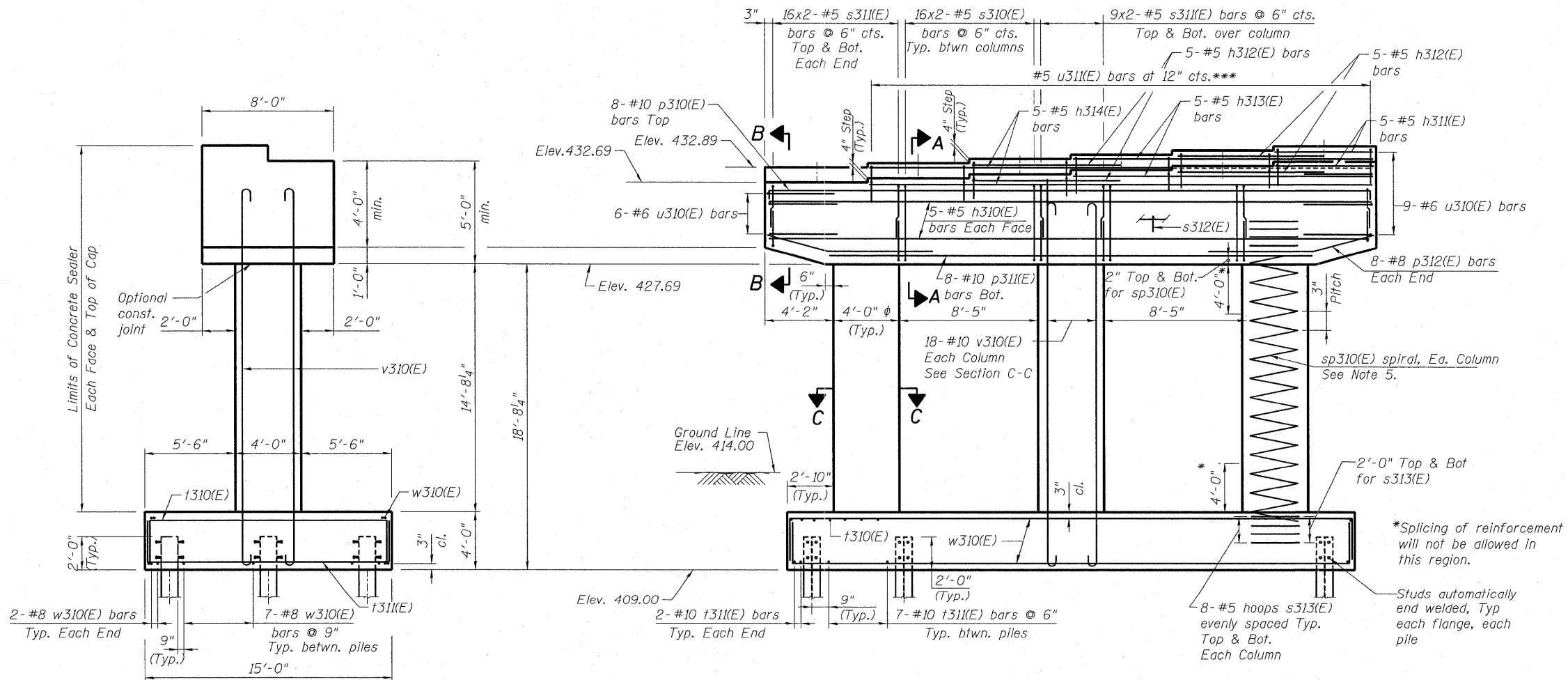
- Space reinforcement in cap to miss anchor bolts.
 - Pour steps monolithically with cap.
 - For details of piles, see Sheet No. S-122.
 - Bars indicated thus 20 x 3-#5 etc. indicates 20 lines of bars with 3 lengths per line.
 - #5 sp310(E) spiral, each column
1) Provide 1/2" extra turns, shop welded together per AWS D1.4 top and bottom. Extend spiral 2" into pier cap & footing. Provide 4-#4 spacers or equivalent.
2) When splicing spiral reinforcement is necessary, the spiral shall be provided with 1/2" extra turns at the ends to be spliced. These additional turns shall either be welded together according to AWS D1.4, or shall both terminate with a 135° standard hook.
 - For Anchor Bolt Details, see Sheet No. S-83 thru S-92.
 - For Sections A-A, B-B & C-C, see Sheet No. S-109.
- *** 31-u311(E) bars match w/h314(E) bars for East & West Brg. Seat
10-u311(E) bars match w/h312(E) bars for East & West Brg. Seat
19-u311(E) bars match w/h313(E) bars for East & West Brg. Seat
6-u311(E) bars match w/h311(E) bars for East & West Brg. Seat
Adjust u311(E) bars in field to avoid conflict with stirrups.



TOP PLAN

TOP OF SEAT ELEVATION

Beam No.	East Brg.	West Brg.
1A	434.35	434.55
2A	434.02	434.22
3A	433.69	433.89
4A	433.35	433.55
5A	433.02	433.22
6A	432.69	432.89



ELEVATION
(Looking Upstation)

END VIEW

P:\66084660\9802.CAD\9801.D-Drawings\76C208_Master-Consult\stated\Structural\082-0323\Sheet\SI108_082-0325_76C75_Pier-3.dgn