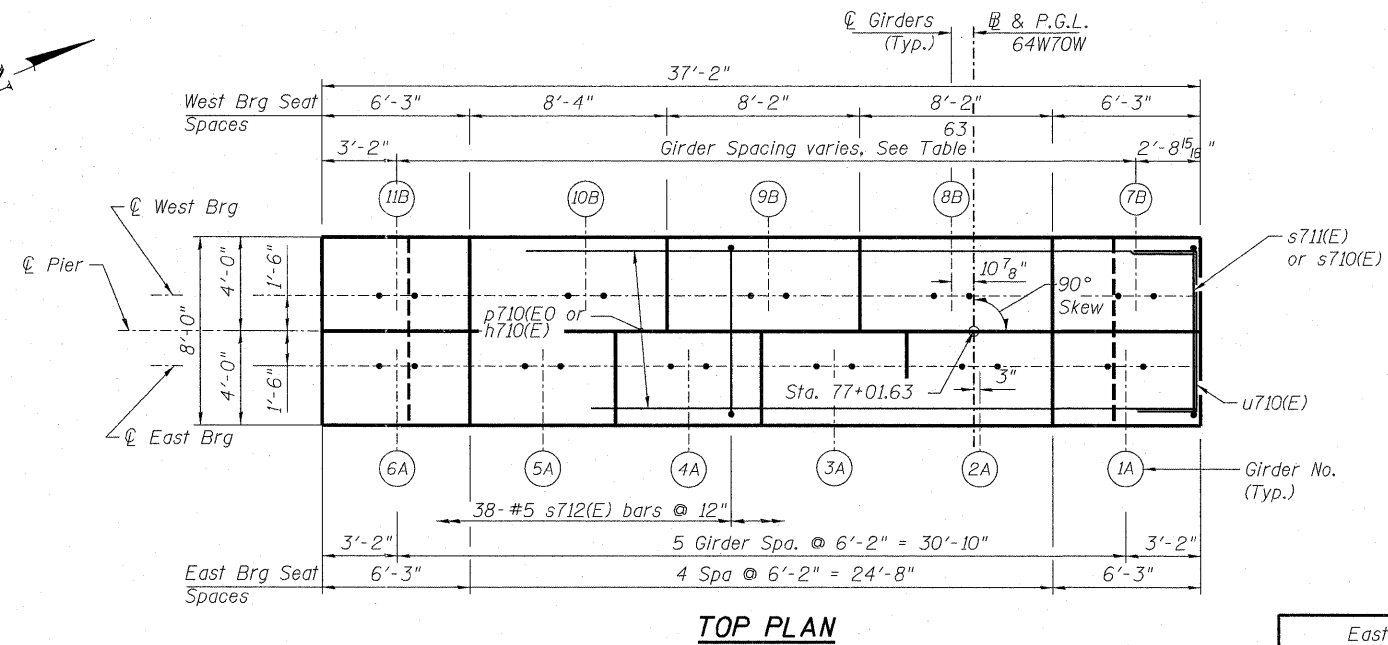
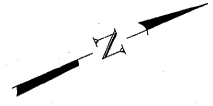


**NOTES:**

- Space reinforcement in cap to miss anchor bolts.
- Pour steps monolithically with cap.
- For details of piles, see Sheet No. S-122.
- Bars indicated thus 20 x 3-#5 etc. indicates 20 lines of bars with 3 lengths per line.
- #5 sp710(E) spiral, each column
  - Provide 1/2 extra turns, shop welded together per AWS D1.4 top and bottom. Extend spiral 2" into pier cap & footing. Provide 4-#4 spacers or equivalent.
  - When splicing spiral reinforcement is necessary, the spiral shall be provided with 1/2 extra turns at the ends to be spliced. These additional turns shall either be welded together according to AWS D1.4, or shall both terminate with a 135° standard hook.
- For Anchor Bolt Details, see Sheet No. S-83 thru S-92.
- For Sections A-A, B-B & C-C, see Sheet No. S-115.



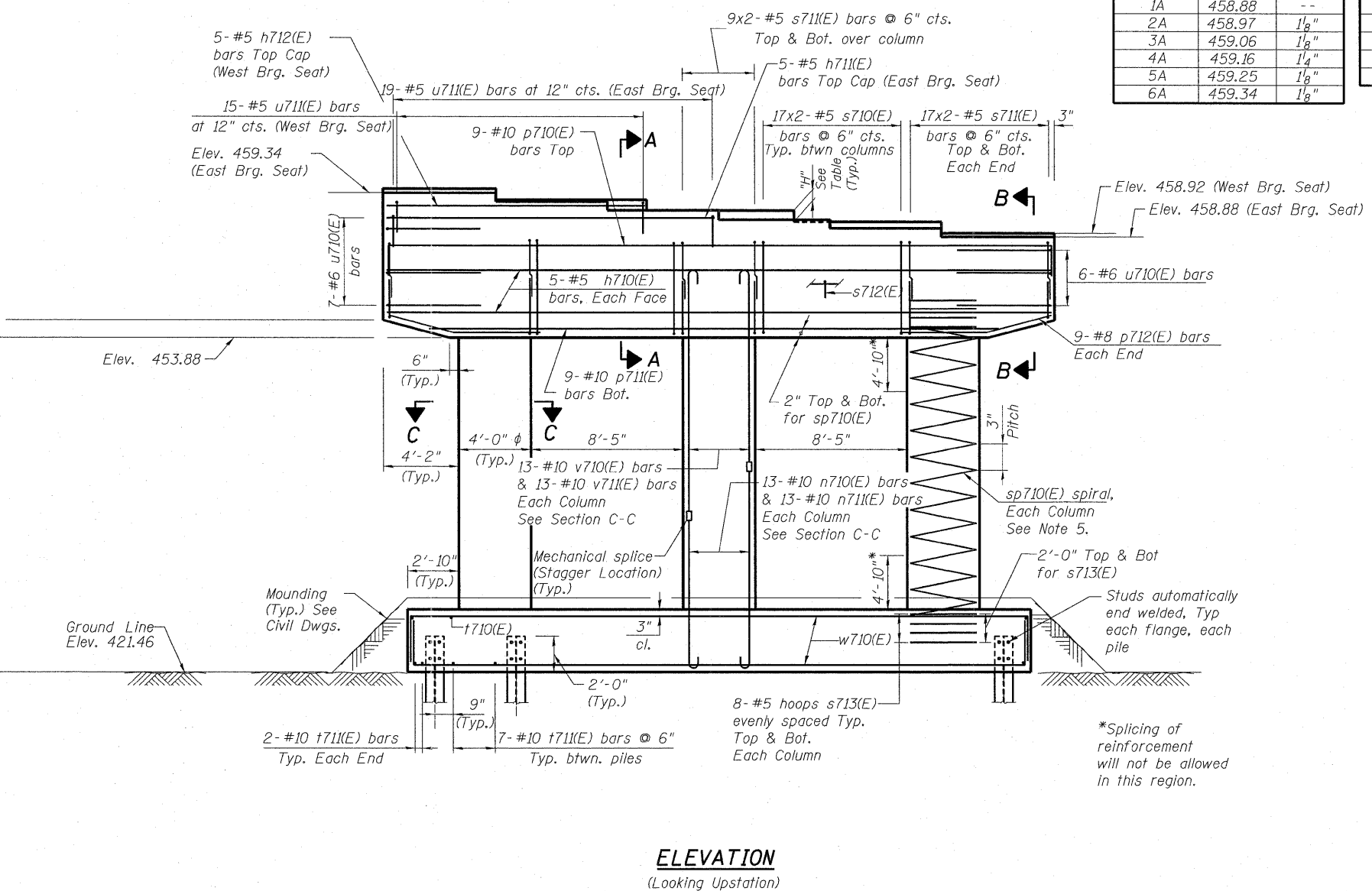
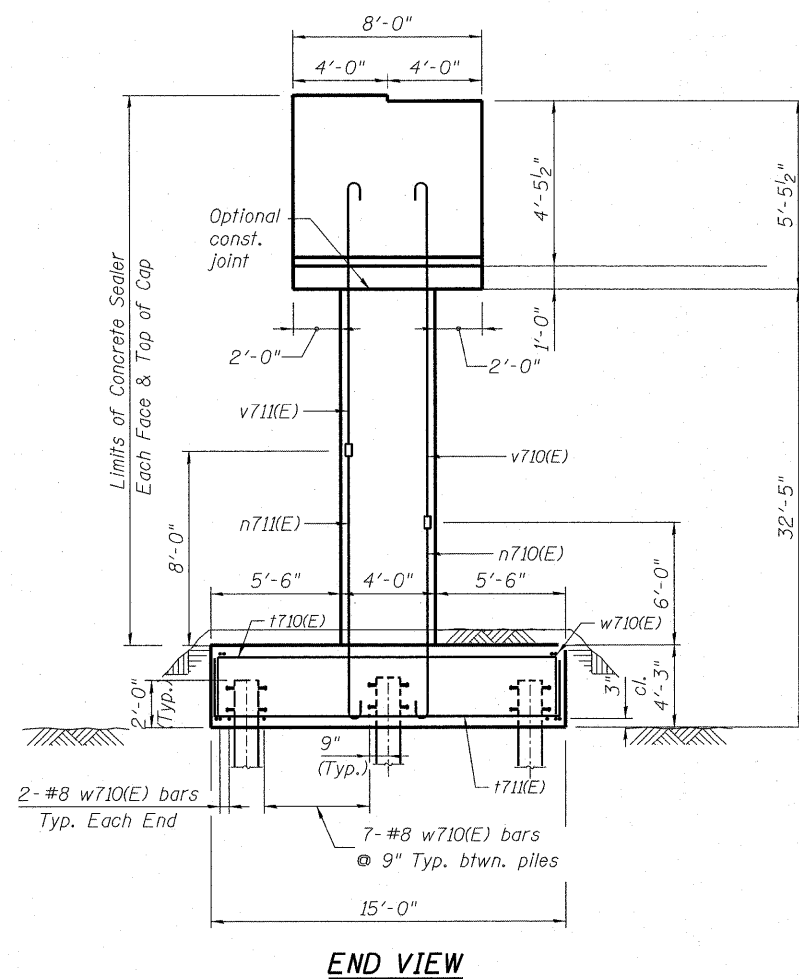
**UNIT 3 GIRDER SPACING @ WEST BEARINGS**

Bay	Spacing
7B-8B	7'-9 <sup>5</sup> / <sub>16</sub> "
8B-9B	7'-9 <sup>1</sup> / <sub>8</sub> "
9B-10B	7'-8 <sup>11</sup> / <sub>16</sub> "
10B-11B	7'-11 <sup>15</sup> / <sub>16</sub> "

**TOP OF SEAT ELEVATION**

East Bearing Seat		
Beam No.	Seat Elev.	Step "H"
1A	458.88	--
2A	458.97	1 <sup>1</sup> / <sub>8</sub> "
3A	459.06	1 <sup>1</sup> / <sub>8</sub> "
4A	459.16	1 <sup>1</sup> / <sub>4</sub> "
5A	459.25	1 <sup>1</sup> / <sub>8</sub> "
6A	459.34	1 <sup>1</sup> / <sub>8</sub> "

West Bearing Seat		
Beam No.	Seat Elev.	Step "H"
7B	458.92	--
8B	459.04	1 <sup>3</sup> / <sub>8</sub> "
9B	459.16	1 <sup>3</sup> / <sub>8</sub> "
10B	459.27	1 <sup>3</sup> / <sub>8</sub> "
11B	459.39	1 <sup>3</sup> / <sub>8</sub> "



P:\6604\6604\908\_CAD\901\_Drawings\A\76C008\_Master\Concrete\Structural\082-0323\Sheet\114\_082-0323\_76C075\_Pier7.dgn



USER NAME = BhattA	DESIGNED - ATB	REVISED -
PLOT SCALE = 0.2" = 1' / in.	DRAWN - PMM	REVISED -
PLOT DATE = \$DATE\$	CHECKED - ATB	REVISED -
	DATE - 03/18/2011	REVISED -

**STATE OF ILLINOIS  
DEPARTMENT OF TRANSPORTATION**

**PIER 7 - S.N. 082-0325  
I-70W OVER I-55, CSX & KCS RAILROADS**

SCALE: NONE SHEET NO. S-114 OF S-138 SHEETS STA. TO STA.

F.A.I. RTE.	SECTION	COUNTY	TOTAL SHEETS	SHEET NO.
70	82-1-B-1	ST. CLAIR	319	229
S.N. 082-0323 & S.N. 082-0325		CONTRACT NO. 76C75		
FED. ROAD DIST. NO.		ILLINOIS FED. AID PROJECT		