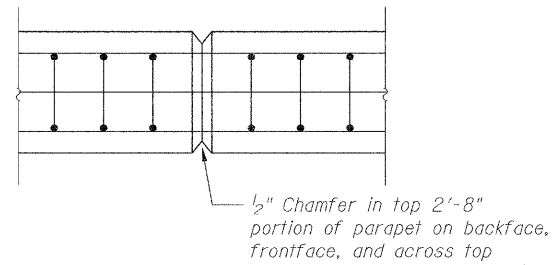
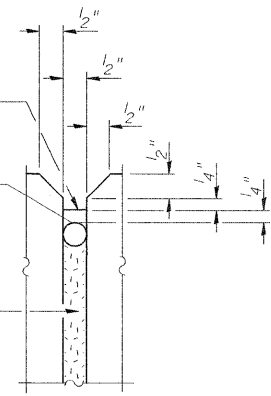
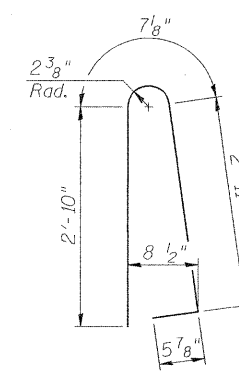


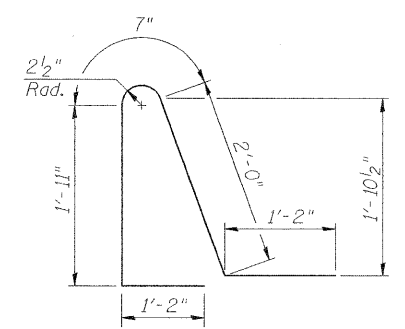
PARAPET EXPANSION JOINT DETAILS



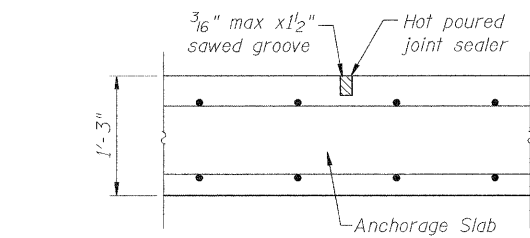
PARAPET CONTRACTION JOINT



BAR d600(E)

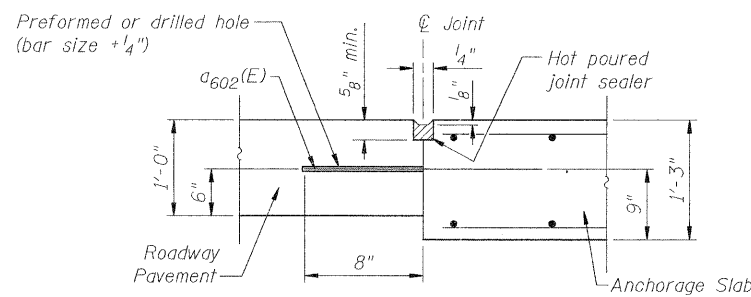


BAR d601(E)



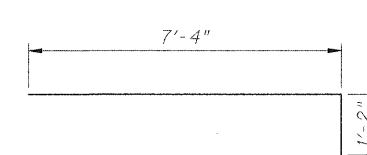
TRANSVERSE CONTRACTION JOINT

See Article 420.05 & 420.12 of the Standard Specifications

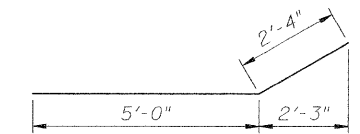


LONGITUDINAL CONSTRUCTION JOINT

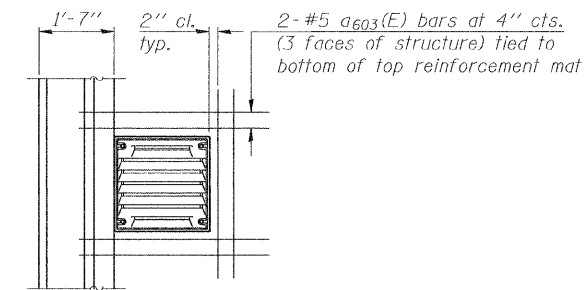
(Tie bar grouted in place)
See Article 420.05 & 420.12 of the Standard Specifications
The Contractor may substitute grout in place tie bars.
Tie bar length can be reduced by 6".



BAR a600(E)

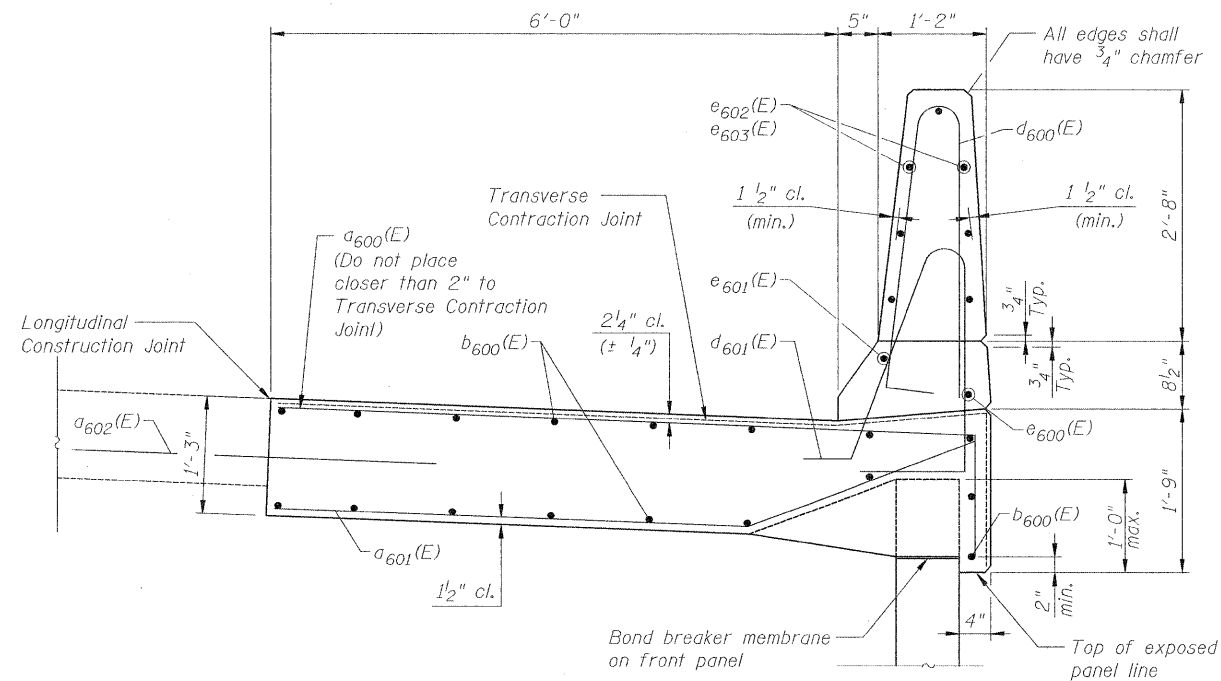


BAR a601(E)

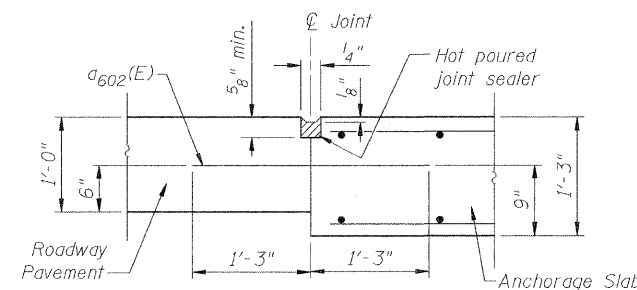


PLAN AT DRAINAGE STRUCTURE

Note:
Cut longitudinal reinforcement to clear catch basins and inlets.



SECTION A-A



LONGITUDINAL CONSTRUCTION JOINT

(Tie bar formed in place)
See Article 420.05 & 420.12 of the Standard Specifications

BILL OF MATERIAL

Bar	No.	Size	Length	Shape
a600(E)	1848	#7	8'-6"	
a601(E)	1848	#7	7'-4"	
a602(E)	694	#6	2'-6"	
a603(E)	36	#5	5'-0"	
b600(E)	987	#6	32'-6"	
d600(E)	1514	#5	6'-10"	
d601(E)	1511	#5	6'-10"	
e600(E)	50	#4	29'-9"	
e601(E)	48	#8	34'-0"	
e602(E)	420	#4	24'-4"	
e603(E)	14	#4	18'-6"	
Reinforcement Bars, Epoxy Coated			Pound	144,690
Concrete Superstructure			Cu. Yds.	177.7
Concrete Structures			Cu. Yds.	513.5