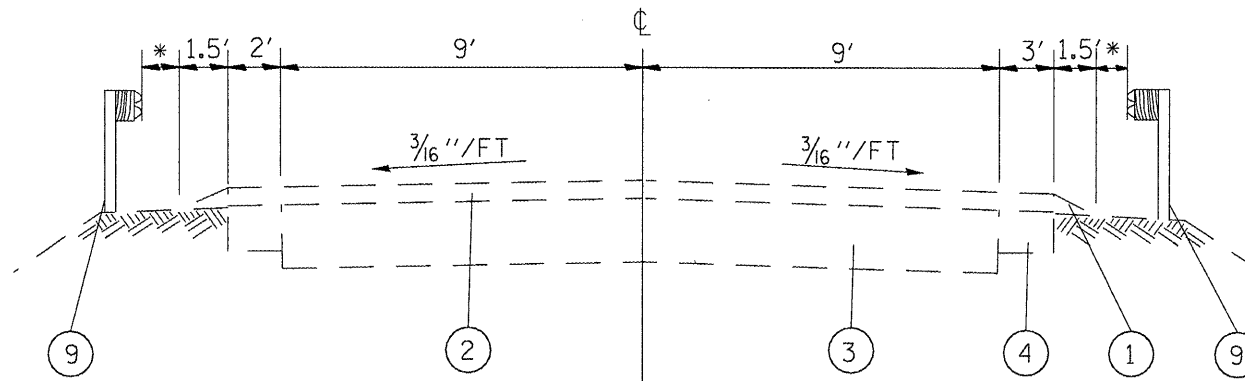


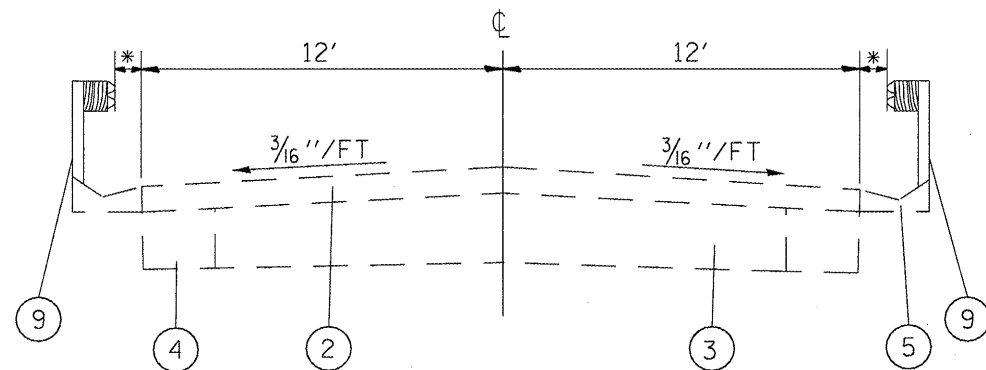
LOC. 1 - EAST & WEST



LOC. 9 - EAST & WEST  
LOC. 10 - EAST & WEST

- LOC. 2 - SW QUAD
- LOC. 3 - WEST
- LOC. 4 - EAST & WEST
- LOC. 5 - EAST & WEST
- LOC. 6 - WEST
- LOC. 7 - EAST & WEST
- LOC. 8 - WEST
- LOC. 11 - EAST & WEST
- LOC. 12 - EAST & WEST
- LOC. 13 - EAST & WEST

\* THE LATERAL DISTANCE TO FACE OF PROPOSED RAIL VARIES PER LOCATION AND EACH SIDE OF IL-3. SEE PLAN SHEETS FOR DIMENSIONS



LOC. 2 - EAST & NW QUAD  
LOC. 3 - EAST  
LOC. 6 - EAST  
LOC. 8 - EAST

### LEGEND

- ① EXISTING AGGREGATE SHOULDER
- ② EXISTING RESURFACING
- ③ EXISTING PAVEMENT
- ④ EXISTING WIDENING
- ⑤ EXISTING GUTTER
- ⑥ EXISTING STABILIZED SUB-BASE 4"
- ⑦ EXISTING HMA SHOULDERS, 8"
- ⑧ EXISTING UNDERDRAINS
- ⑨ GUARDRAIL

FILE NAME =	USER NAME = #USER#	DESIGNED -	REVISED -
#FILE#		DRAWN -	REVISED -
	PLOT SCALE = #SCALE#	CHECKED -	REVISED -
	PLOT DATE = #DATE#	DATE -	REVISED -

STATE OF ILLINOIS  
DEPARTMENT OF TRANSPORTATION

#### TYPICAL SECTIONS

SCALE: \_\_\_\_\_ SHEET NO. 1 OF 1 SHEETS STA. \_\_\_\_\_ TO STA. \_\_\_\_\_

F.A.P. RTE.	SECTION	COUNTY	TOTAL SHEETS	SHEET NO.
312	122-J	RANDOLPH	93	4
			CONTRACT NO. 76E33	
ILLINOIS FED. AID PROJECT				