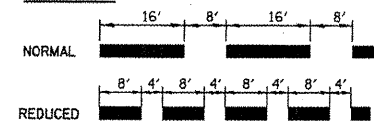


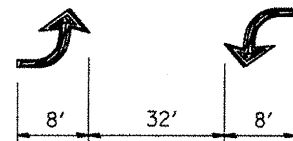
**NOTES**

1. PAINT CURB AND NOSE SOLID FOR 10 FEET OR RADIUS OF NOSE, WHICHEVER IS GREATER.
2. PAINT MINIMUM OF 3 STRIPES IN DIRECTION OF TRAFFIC.
3. REDUCED SPACING USED TO OBTAIN 3 STRIPS MINIMUM.
4. STRIPING RECOMMENDED ONLY WHERE OPERATIONAL PROBLEMS DICTATE.
5. PAINT SOLID WHERE A MINIMUM OF 3 STRIPES CANNOT BE PLACED.

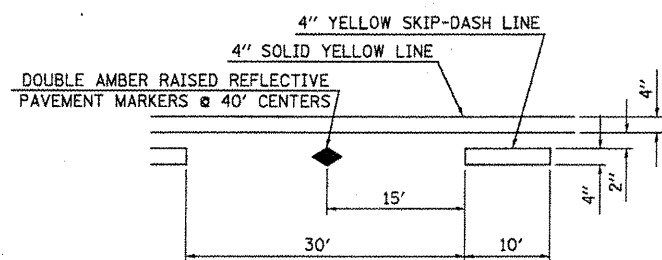
**SPACING**



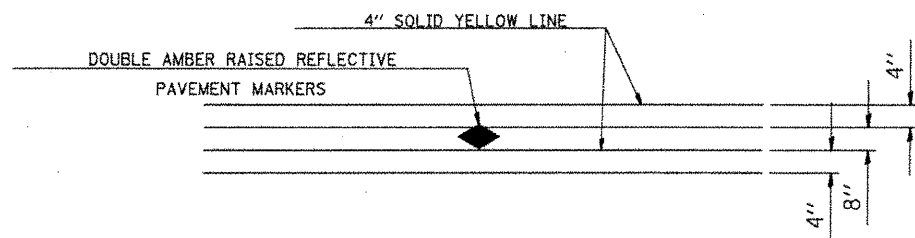
**CURB MARKING**



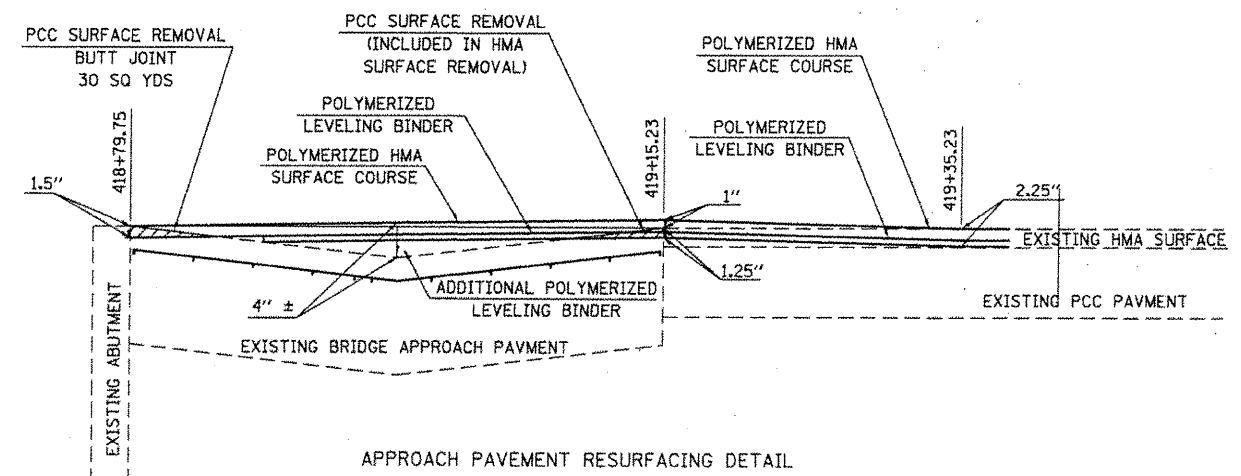
BI-DIRECTIONAL TURN ARROW @ 200' O. C.



TYPICAL APPLICATION FOR BI-DIRECTIONAL TURN LANE WITH RAISED REFLECTIVE PAVEMENT MARKERS



TYPICAL APPLICATION FOR DOUBLE YELLOW LANE LINES WITH RAISED REFLECTIVE PAVEMENT MARKERS



FILE NAME =	USER NAME = #USER#	DESIGNED -	REVISED -
#FILE#		DRAWN -	REVISED -
	PLOT SCALE = #SCALE#	CHECKED -	REVISED -
	PLOT DATE = #DATE#	DATE -	REVISED -

STATE OF ILLINOIS  
DEPARTMENT OF TRANSPORTATION

**DETAILS**

SCALE: SHEET NO. 1 OF 1 SHEETS STA. TO STA.

F.A.P. RTE.	SECTION	COUNTY	TOTAL SHEETS	SHEET NO.
789	(72, 125)RS-4	MADISON	19	19
CONTRACT NO. 76E39			ILLINOIS FED. AID PROJECT	