

F.A.P. RTE.	SECTION	COUNTY	TOTAL SHEETS	SHEET NO.
776	102B-1	HAMILTON	52	1
FED. ROAD DIST. NO.	ILLINOIS	CONTRACT NO. 78067		

STATE OF ILLINOIS  
DEPARTMENT OF TRANSPORTATION

DIVISION OF HIGHWAYS  
**PROPOSED  
HIGHWAY PLANS**

F.A.P. ROUTE 776 (IL ROUTE 242)  
SECTION 102B-1  
PROJECT **BRF-0776(028)**  
HAMILTON COUNTY  
C-99-053-08  
STRUCTURE REPLACEMENT  
OVER BRANCH OF BIG CREEK

**INDEX OF SHEETS**  
SHEET NO. DESCRIPTION

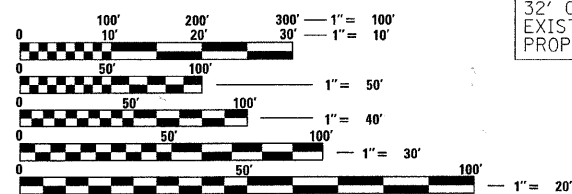
1. COVER SHEET
2. GENERAL NOTES AND STANDARDS
3. SUMMARY OF QUANTITIES
- 4.-5. TYPICAL SECTIONS
- 6.-7. SCHEDULES OF QUANTITIES
8. ALIGNMENT TIES AND BENCHMARK
- 9.-10. PLAN AND PROFILE
11. STAGE I CONSTRUCTION
12. STAGE II CONSTRUCTION
13. MISCELLANEOUS DETAILS
- 14.-15. SHOULDER INLET WITH CURB DETAILS
16. EROSION CONTROL PLAN
17. PAVEMENT MARKINGS
18. PAVED SHOULDER LAYOUT
19. GUARDRAIL LAYOUT
20. WIDE LOAD DETOUR
21. ROW SHEET
- 22.-23. STANDARD DETAILS DISTRICT 9
- 24.-43. STRUCTURE PLANS
- 44.-45. SOIL BORINGS
- 46.-52. STATION CROSS SECTIONS

**UTILITIES**

HAMILTON COUNTY WATER  
P.O. BOX 220  
MCLEANSBORO, IL 62859  
ATTN: DALE BIGGERSTAFF

WAYNE-WHITE COUNTIES ELECTRIC  
P.O. BOX DRAWER E  
FAIRFIELD, IL 62837  
ATTN: ERIN HALLEY

HAMILTON COUNTY TELEPHONE  
HIGHWAY 142  
P.O. BOX 40  
DAHLGREN, IL 62828  
ATTN: KEVIN PYLE



**SOUTH CROUCH TOWNSHIP**

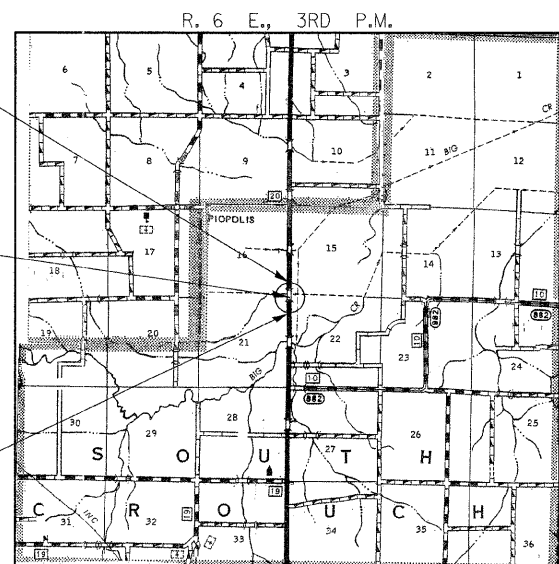
FULL SIZE PLANS HAVE BEEN PREPARED USING STANDARD ENGINEERING SCALES. REDUCED SIZED PLANS WILL NOT CONFORM TO STANDARD SCALES. IN MAKING MEASUREMENTS ON REDUCED PLANS, THE ABOVE SCALES MAY BE USED.

J.U.L.I.E.  
JOINT UTILITY LOCATION INFORMATION FOR EXCAVATION  
1-800-892-0123  
OR 811

STA. 712+80  
SINGLE SPAN STEEL WIDE FLANGE BEAM BRIDGE  
78' BK TO BK ABUTMENTS  
32' CLEAR WIDTH; SKEW = 0°  
EXISTING STRUCTURE NO. 033-0029  
PROPOSED STRUCTURE NO. 033-0054

IMPROVEMENT BEGINS  
STATION 709+62.38

IMPROVEMENT ENDS  
STATION 715+97.62



**LOCATION MAP**

APPROXIMATE SCALE: 0 1 MILE  
NET LENGTH OF PROJECT = 634.25 FEET = 0.120 MILES  
GROSS LENGTH OF PROJECT = 634.25 FEET = 0.120 MILES  
ROADWAY LENGTH = 556.25 FEET = 0.105 MILES  
BRIDGE LENGTH = 78.00 FEET = 0.015 MILES

**HAMPTON, LENZINI AND RENWICK, INC.**  
CIVIL ENGINEERS - STRUCTURAL ENGINEERS - LAND SURVEYORS  
3085 STEVENSON DRIVE, SUITE 201  
SPRINGFIELD, ILLINOIS 62703  
217.546.3400 www.hlrengineering.com



TRAFFIC DATA

FUNCTIONAL CLASSIFICATION:	MINOR ARTERIAL (NON URBAN)
DESIGN SPEED:	55 MPH
POSTED SPEED:	55 MPH
ADT:	1320 (2008)
PV:	84.47%
TRUCKS:	15.53%

STATE OF ILLINOIS  
DEPARTMENT OF TRANSPORTATION  
DIVISION OF HIGHWAYS

SUBMITTED March 12, 2011  
Scott E. Stett, P.E.  
DEPUTY DIRECTOR OF HIGHWAYS, REGION ENGINEER

May 13, 2011  
Scott E. Stett, P.E.  
acting ENGINEER OF DESIGN AND ENVIRONMENT

May 13, 2011  
Christine M. Reed  
DIRECTOR OF HIGHWAYS, CHIEF ENGINEER

DATE: 2/23/2011

EXPIRES: 11/30/2011

**PRINTED BY THE AUTHORITY  
OF THE STATE OF ILLINOIS**

PROJECT ENGINEER: DAVID PICHE (618) 351-5277

CONTRACT NO. 78067