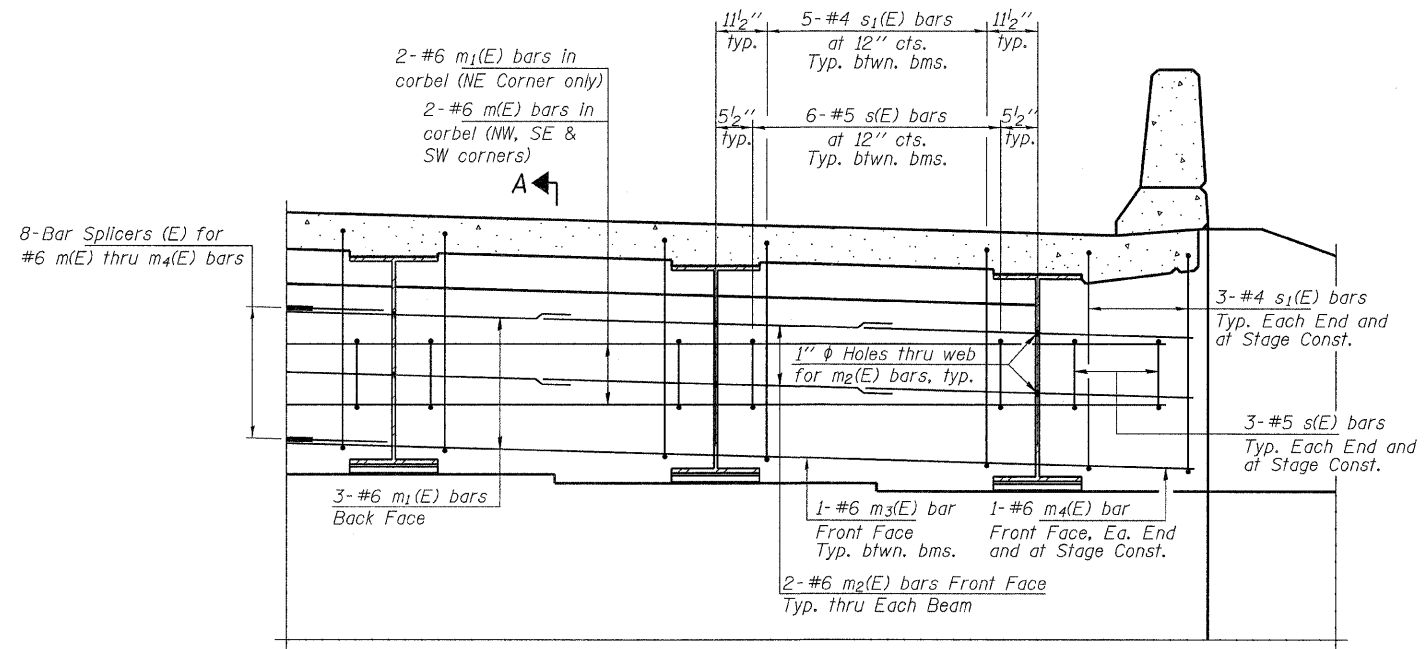
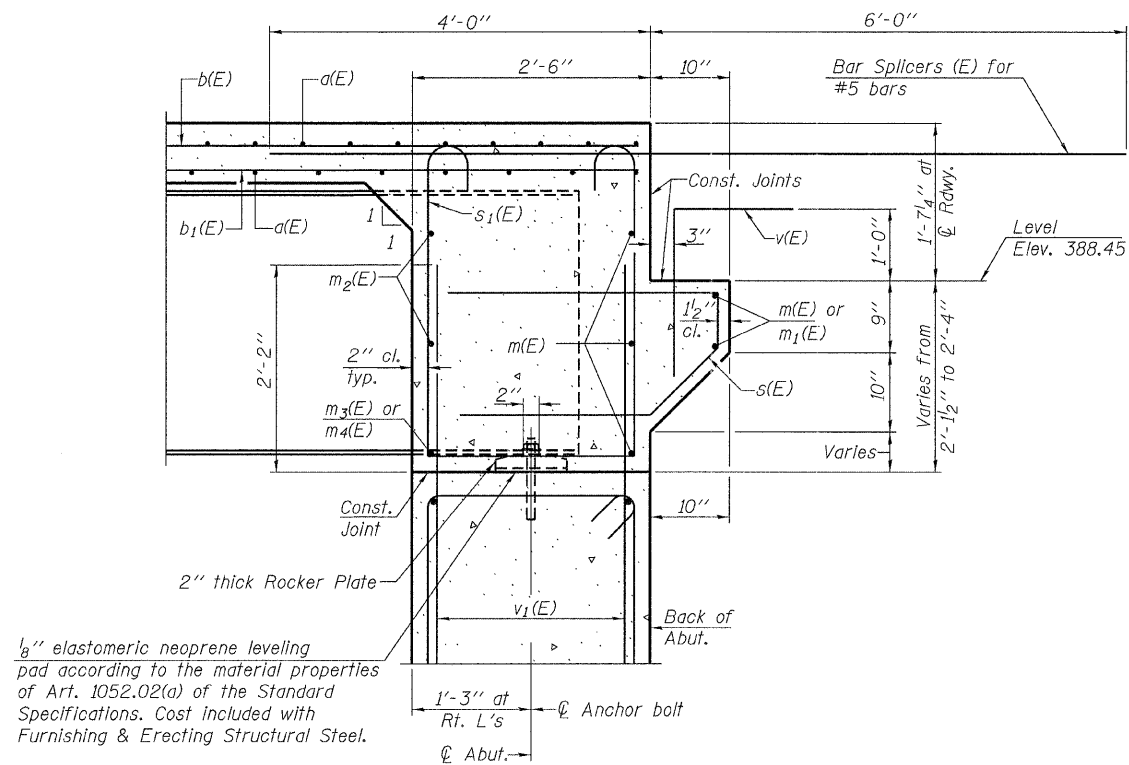


Notes:
 Reinforcement bars in diaphragm are billed with superstructure on sheet 10 of 22.
 Concrete in diaphragm is included with Concrete Superstructure on sheet 10 of 22.
 The s(E) and s₁(E) bars shall be placed parallel to the beams. Spacing for these bars shall be at right angles to the beams.
 For Bar Splicer details see sheet 19 of 22.

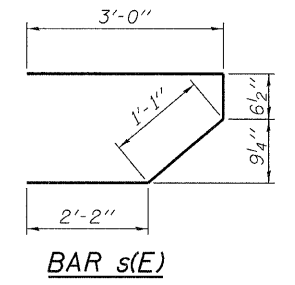


DIAPHRAGM ELEVATION AT ABUTMENT

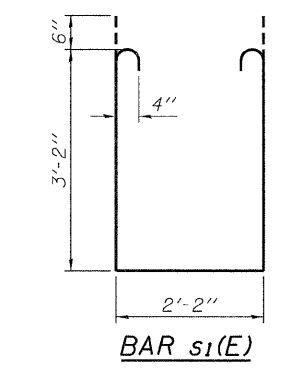
MIN. BAR LAP
 #6 bar = 3'-4"



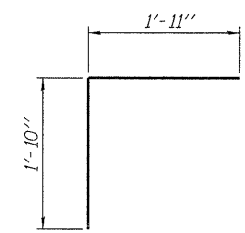
SECTION A-A
 Dimensions at right angles to abutment, except as shown.



BAR s(E)



BAR s1(E)



BAR v(E)

FILE NAME = 090239-sht-bridge.dgn	USER NAME =	DESIGNED - S.M.S.	REVISED -	STATE OF ILLINOIS DEPARTMENT OF TRANSPORTATION	SUPERSTRUCTURE DETAILS STRUCTURE NO. 033-0054	F.A.P.	SECTION	COUNTY	TOTAL SHEETS	SHEET NO.	
HAMPTON, LENZINI AND RENWICK, INC. 2008 STEVENSON DRIVE, SUITE 201 SPRINGFIELD, ILLINOIS 62703	PLOT SCALE =	CHECKED - C.C.S.	REVISED -			776	102B-1	HAMILTON	52	34	
ILLINOIS PROFESSIONAL DESIGN FIRM L.S./P.E./S.E. CORP. 184300959	PLOT DATE = 2/22/2011	DRAWN - D.A.B.	REVISED -			CONTRACT NO. 78067					
		CHECKED - M.D.C.	REVISED -			ILLINOIS FED. AID PROJECT					
SHEET NO. 11 OF 22 SHEETS											