

STATE OF ILLINOIS
DEPARTMENT OF TRANSPORTATION
DIVISION OF HIGHWAYS

PROPOSED
HIGHWAY PLANS

FAP ROUTE 331 (ILLINOIS 13)
SECTION (1X-1)R-1,RS-2,N-2,TS-3
PROJECT NHF-0331(056)
INTERSECTION IMPROVEMENTS
WILLIAMSON COUNTY

C-99-009-10

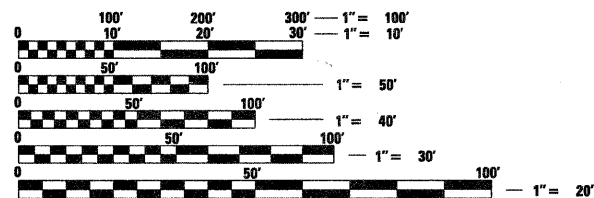
FOR INDEX OF SHEETS, SEE SHEET NO. 3

TRAFFIC DATA

LOCATION	ADT	% TRUCKS
NORTH CARBON ST NORTH OF IL 13	8800	35.2%
IL 13 EAST OF NORTH CARBON ST	25,900	18.2%
SOUTH CARBON ST OF IL 13	16,200	38.1%
IL 13 W OF NORTH CARBON ST	31,400	14.0%

TOWNSHIPS

MARION

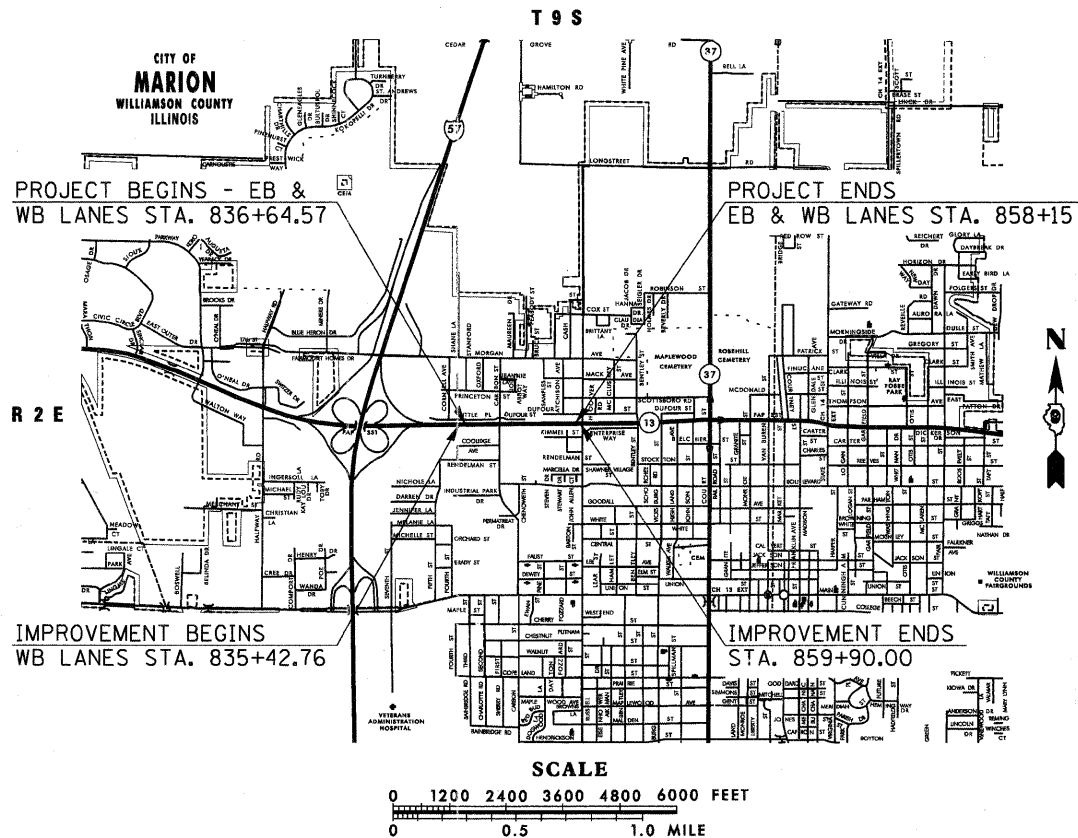


FULL SIZE PLANS HAVE BEEN PREPARED USING STANDARD ENGINEERING SCALES. REDUCED SIZED PLANS WILL NOT CONFORM TO STANDARD SCALES. IN MAKING MEASUREMENTS ON REDUCED PLANS, THE ABOVE SCALES MAY BE USED.

J.U.L.I.E.
 JOINT UTILITY LOCATION INFORMATION FOR EXCAVATION
 1-800-892-0123
 OR 811

PROJECT ENGINEER: SUSAN POE
 618-351-5213

CONTRACT NO. 78155



PROJECT LENGTH - IL 13
 NET LENGTH = 2,150.43 FT. = 0.407 MILE

F.A.P. RTE.	SECTION	COUNTY	TOTAL SHEETS	SHEET NO.
331	(1X-1)R-1,RS-2,N-2,TS-3	WILLIAMSON	167	1
ILLINOIS			CONTRACT NO. 78155	

#167 + 1 = 168

D-99-009-10



LOCATION OF SECTION INDICATED THUS: - [black rectangle] -

STATE OF ILLINOIS
 DEPARTMENT OF TRANSPORTATION
 DIVISION OF HIGHWAYS

SUBMITTED March 23 20 11
Mary C. Lomis
 DEPUTY DIRECTOR OF HIGHWAYS, REGION ENGINEER

May 13 20 11
Scott E. Stitt, P.E. Jr.
 Acting ENGINEER OF DESIGN AND ENVIRONMENT

May 13 20 11
Christine M. Roadler
 DIRECTOR OF HIGHWAYS, CHIEF ENGINEER

PRINTED BY THE AUTHORITY
OF THE STATE OF ILLINOIS