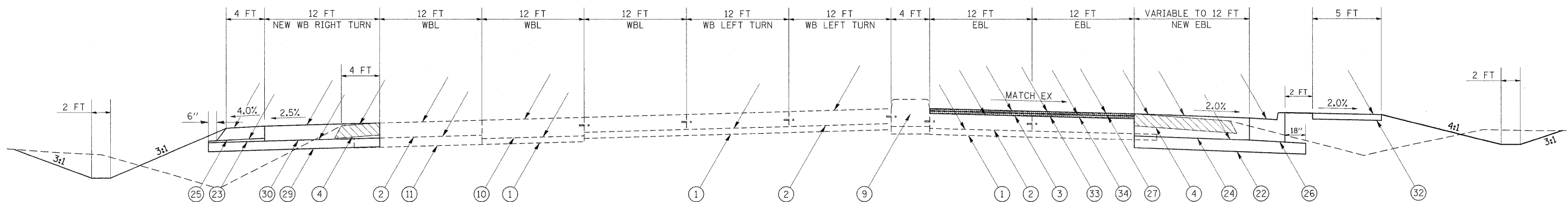


# TYPICAL SECTION #7

## ADDITIONAL LANES WITH RESURFACING

WILLIAMSON COUNTY  
FAP 331 (IL 13)  
(LOOKING EAST)

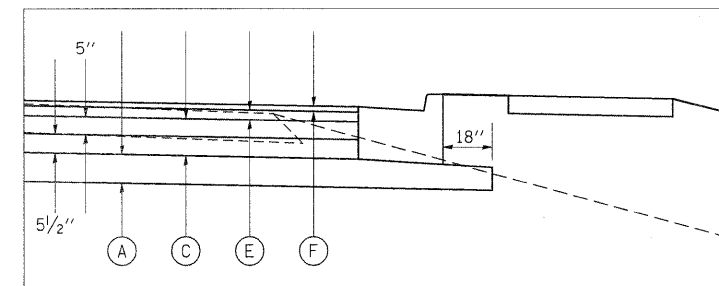


TO BE USED:  
STA 844+00.00 TO STA 845+05.00

### LEGEND

- |  |   |
|--|---|
| <ul style="list-style-type: none"> <li>① EXISTING SUBBASE GRANULAR MATERIAL, TYPE A 4"</li> <li>② EXISTING PCC PAVEMENT 10"</li> <li>③ EXISTING HOT-MIX ASPHALT OVERLAY 3 1/4"</li> <li>④ EXISTING HOT-MIX ASPHALT SHOULDER 8"</li> <li>⑤ EXISTING CONCRETE MEDIAN SURFACE 4"</li> <li>⑥ EXISTING COMBINATION C&amp;G TYPE B-6.12</li> <li>⑦ EXISTING BARRIER CURB, SPECIAL</li> <li>⑧ EXISTING COMBINATION C&amp;G TYPE B-6.24</li> <li>⑨ EXISTING SOLID MEDIAN, SB-6.06</li> <li>⑩ EXISTING PCC PAVEMENT 13"</li> <li>⑪ EXISTING SUBBASE GRANULAR MATERIAL, TYPE A 7"</li> </ul> | <ul style="list-style-type: none"> <li>⑫ PROPOSED HOT-MIX ASPHALT SURFACE REMOVAL, 1 1/2"</li> <li>⑬ PROPOSED SUBBASE GRANULAR MATERIAL, TYPE A 8"</li> <li>⑭ PROPOSED SUBBASE GRANULAR MATERIAL, TYPE C</li> <li>⑮ PROPOSED HOT-MIX ASPHALT PAVEMENT (FULL-DEPTH), 14 3/4"</li> <li>⑯ PROPOSED HOT-MIX ASPHALT SHOULDERS, 8"</li> <li>⑰ PROPOSED COMBINATION CONCRETE CURB &amp; GUTTER, TYPE B-6.24</li> <li>⑱ PROPOSED POLYMERIZED HOT-MIX ASPHALT SURFACE COURSE, MIX "E", N105, 1 1/2"</li> <li>⑲ PROPOSED CONCRETE MEDIAN SURFACE 4"</li> <li>⑳ PROPOSED SUBBASE GRANULAR MATERIAL, TYPE A 6"</li> <li>㉑ PROPOSED PORTLAND CEMENT CONCRETE PAVEMENT 10"</li> <li>㉒ PROPOSED CONCRETE MEDIAN, TYPE SB-6.06</li> <li>㉓ PROPOSED PORTLAND CEMENT CONCRETE SIDEWALK, 5"</li> <li>㉔ PROPOSED HOT-MIX ASPHALT SURFACE REMOVAL, 3 1/4"</li> <li>㉕ PROPOSED POLYMERIZED LEVELING BINDER (MACHINE METHOD), N105, 1 3/4"</li> </ul> |
|--|---|
- 
- |  |  |
|--|--|
| <ul style="list-style-type: none"> <li> PROPOSED PAVEMENT REMOVAL</li> <li> PROPOSED PAVED SHOULDER REMOVAL</li> <li> PROPOSED COMBINATION C&amp;G REMOVAL</li> <li> PROPOSED HMA SURFACE REMOVAL</li> </ul> | <ul style="list-style-type: none"> <li> PROPOSED MEDIAN REMOVAL</li> <li> PROPOSED MEDIAN SURFACE REMOVAL</li> </ul> |
|--|--|

### PAVING DETAIL



- Ⓐ PROPOSED SUBBASE GRANULAR MATERIAL, TYPE A 8"
- Ⓑ PROPOSED SUBBASE GRANULAR MATERIAL, TYPE C
- Ⓒ HOT-MIX ASPHALT BINDER COURSE, N90, IL-19.0\*
- Ⓓ HOT-MIX ASPHALT SURFACE COURSE, MIX C, N70 3" MAX\*
- Ⓔ POLYMERIZED HMA BINDER COURSE, N105, IL-19.0, 2 3/4"\*
- Ⓕ POLYMERIZED HMA SURFACE COURSE, MIX E, N105, 1 1/2"

\* FOR INFORMATION ONLY - NOT PAY ITEMS  
SEE MIX DESIGN TABLES FOR MORE INFORMATION

FILE NAME =	USER NAME = thomashf	DESIGNED -	REVISED -	<b>STATE OF ILLINOIS DEPARTMENT OF TRANSPORTATION</b>	<b>TYPICAL SECTIONS FAP 331 (IL 13)</b>	F.A.P. RTE.	SECTION	COUNTY	TOTAL SHEETS	SHEET NO.	
c:\pw\work\pwsdot\thomashf\0157472\7818	S-shit-misc.dgn	DRAWN -	REVISED -			331	(1X-1R-1,RS-2,N-2,TS-3	WILLIAMSON	167	14	
	PLOT SCALE = 50,0000' / IN.	CHECKED -	REVISED -			CONTRACT NO. 78155					
	PLOT DATE = 4/19/2011	DATE -	REVISED -			ILLINOIS FED. AID PROJECT					