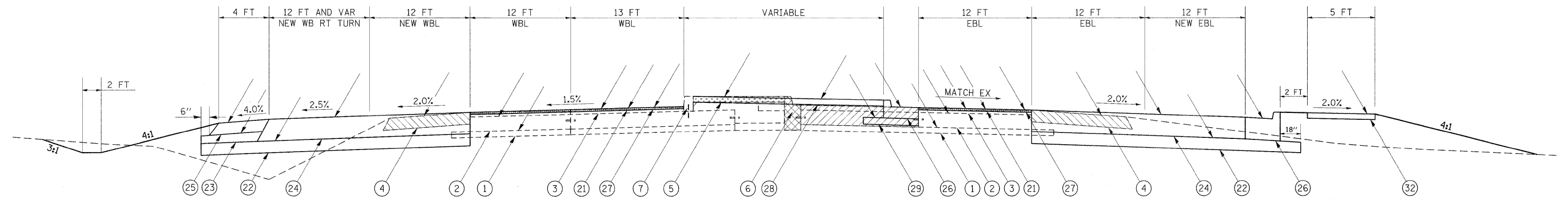


# TYPICAL SECTION #13

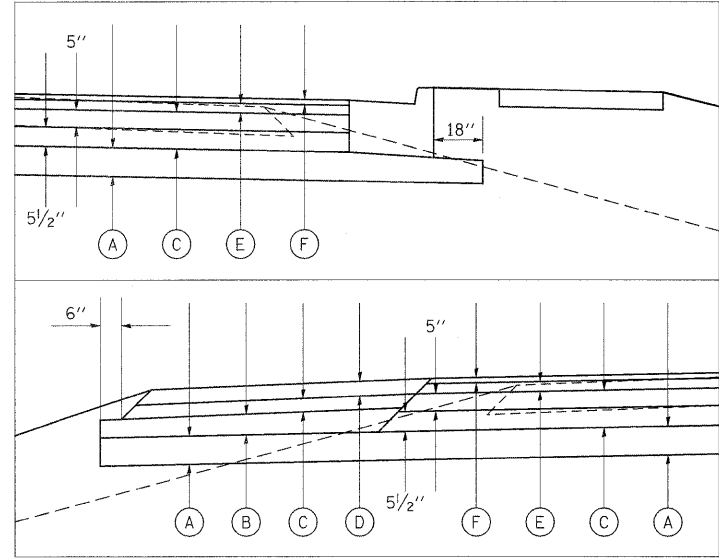
## ADDITIONAL LANES WITH RESURFACING

WILLIAMSON COUNTY  
FAP 331 (IL 13)  
(LOOKING EAST)



TO BE USED:  
STA 852+63.47 TO STA 854+54.00

### PAVING DETAILS



- (A) PROPOSED SUBBASE GRANULAR MATERIAL, TYPE A 8"
  - (B) PROPOSED SUBBASE GRANULAR MATERIAL, TYPE C
  - (C) HOT-MIX ASPHALT BINDER COURSE, N90, IL-19.0\*
  - (D) HOT-MIX ASPHALT SURFACE COURSE, MIX C, N70 3" MAX\*
  - (E) POLYMERIZED HMA BINDER COURSE, N105, IL-19.0, 2 3/4"\*
  - (F) POLYMERIZED HMA SURFACE COURSE, MIX E, N105, 1 1/2"
- \* FOR INFORMATION ONLY - NOT PAY ITEMS  
SEE MIX DESIGN TABLES FOR MORE INFORMATION

### LEGEND

- (1) EXISTING SUBBASE GRANULAR MATERIAL, TYPE A 4"
- (2) EXISTING PCC PAVEMENT 10"
- (3) EXISTING HOT-MIX ASPHALT OVERLAY 3 1/4"
- (4) EXISTING HOT-MIX ASPHALT SHOULDER 8"
- (5) EXISTING CONCRETE MEDIAN SURFACE 4"
- (6) EXISTING COMBINATION C&G TYPE B-6.12
- (7) EXISTING BARRIER CURB, SPECIAL
- (8) EXISTING COMBINATION C&G TYPE B-6.24
- (9) EXISTING SOLID MEDIAN, SB-6.06
- (10) EXISTING PCC PAVEMENT 13"
- (11) EXISTING SUBBASE GRANULAR MATERIAL, TYPE A 7"
- (12) PROPOSED PAVEMENT REMOVAL
- (13) PROPOSED PAVED SHOULDER REMOVAL
- (14) PROPOSED COMBINATION C&G REMOVAL
- (15) PROPOSED HMA SURFACE REMOVAL
- (16) PROPOSED HOT-MIX ASPHALT SURFACE REMOVAL, 1 1/2"
- (17) PROPOSED SUBBASE GRANULAR MATERIAL, TYPE A 8"
- (18) PROPOSED SUBBASE GRANULAR MATERIAL, TYPE C
- (19) PROPOSED HOT-MIX ASPHALT PAVEMENT (FULL-DEPTH), 14 3/4"
- (20) PROPOSED HOT-MIX ASPHALT SHOULDERS, 8"
- (21) PROPOSED COMBINATION CONCRETE CURB & GUTTER, TYPE B-6.24
- (22) PROPOSED POLYMERIZED HOT-MIX ASPHALT SURFACE COURSE, MIX "E", N105, 1 1/2"
- (23) PROPOSED CONCRETE MEDIAN SURFACE 4"
- (24) PROPOSED SUBBASE GRANULAR MATERIAL, TYPE A 6"
- (25) PROPOSED PORTLAND CEMENT CONCRETE PAVEMENT 10"
- (26) PROPOSED CONCRETE MEDIAN, TYPE SB-6.06
- (27) PROPOSED PORTLAND CEMENT CONCRETE SIDEWALK, 5"
- (28) PROPOSED HOT-MIX ASPHALT SURFACE REMOVAL, 3 1/4"
- (29) PROPOSED POLYMERIZED LEVELING BINDER (MACHINE METHOD), N105, 1 3/4"
- (30) PROPOSED MEDIAN REMOVAL
- (31) PROPOSED MEDIAN SURFACE REMOVAL

|  |                             |            |           |   |   |                    |                        |                           |              |           |  |
|--|-----------------------------|------------|-----------|---|---|--------------------|------------------------|---------------------------|--------------|-----------|--|
| FILE NAME =                            | USER NAME = thomashf        | DESIGNED - | REVISED - | <b>STATE OF ILLINOIS</b><br><b>DEPARTMENT OF TRANSPORTATION</b> | <b>TYPICAL SECTIONS</b><br><b>FAP 331 (IL 13)</b> | F.A.P. RTE.        | SECTION                | COUNTY                    | TOTAL SHEETS | SHEET NO. |  |
| cd:\pwork\pwork\thomashf\d0157472\7815 | 5-shit-misc.dgn             | DRAWN -    | REVISED - |   |   | 331                | (1X-1R-1,RS-2,N-2,TS-3 | WILLIAMSON                | 167          | 20        |  |
|  | PLOT SCALE = 50.0000' / IN. | CHECKED -  | REVISED - |   |   | CONTRACT NO. 78155 |                        | ILLINOIS FED. AID PROJECT |              |           |  |
|  | PLOT DATE = 4/19/2011       | DATE -     | REVISED - |   |   | SCALE:             | SHEET NO. OF SHEETS    | STA. TO STA.              |              |           |  |