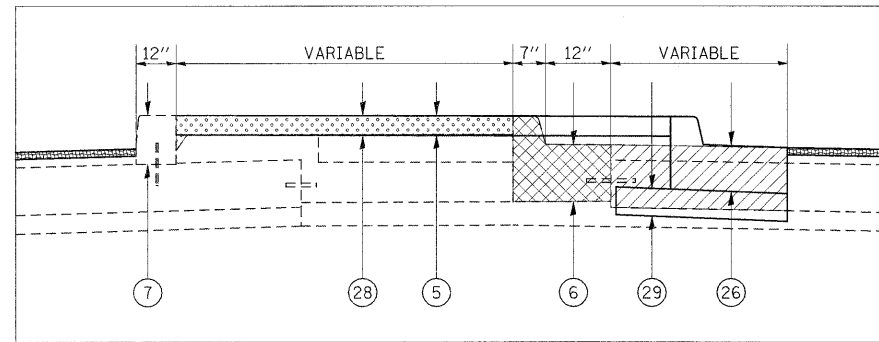


MEDIAN DETAIL



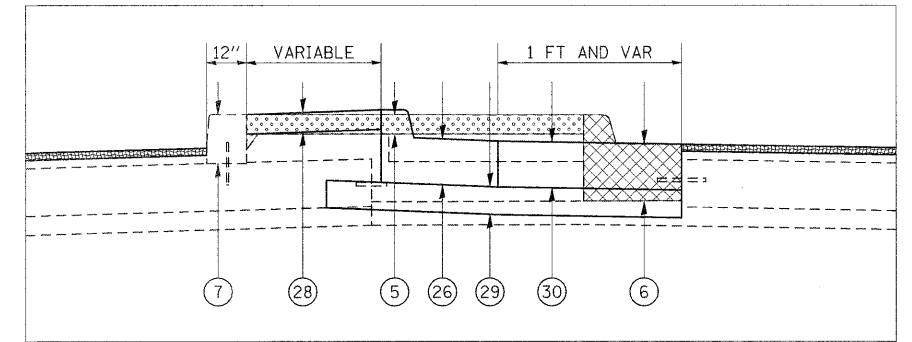
TO BE USED:  
STA 854+54.00 TO STA 855+59.57

TYPICAL SECTION #14

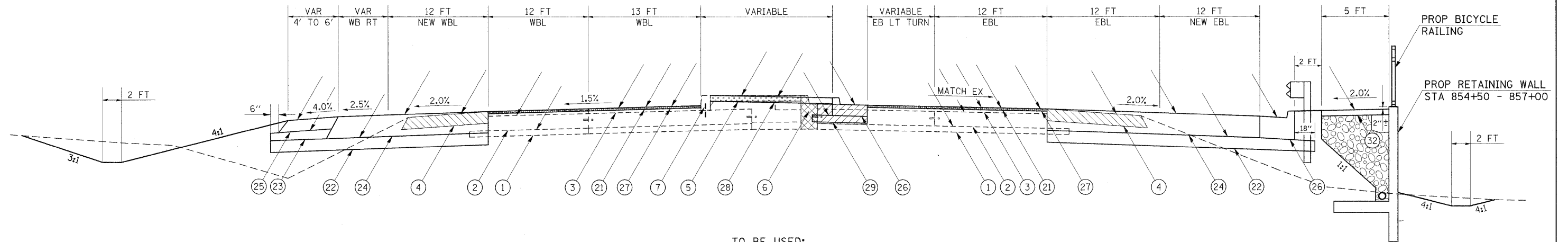
ADDITIONAL LANES WITH RESURFACING

WILLIAMSON COUNTY  
FAP 331 (IL 13)  
(LOOKING EAST)

MEDIAN DETAIL



TO BE USED:  
STA 855+59.57 TO STA 856+00.00

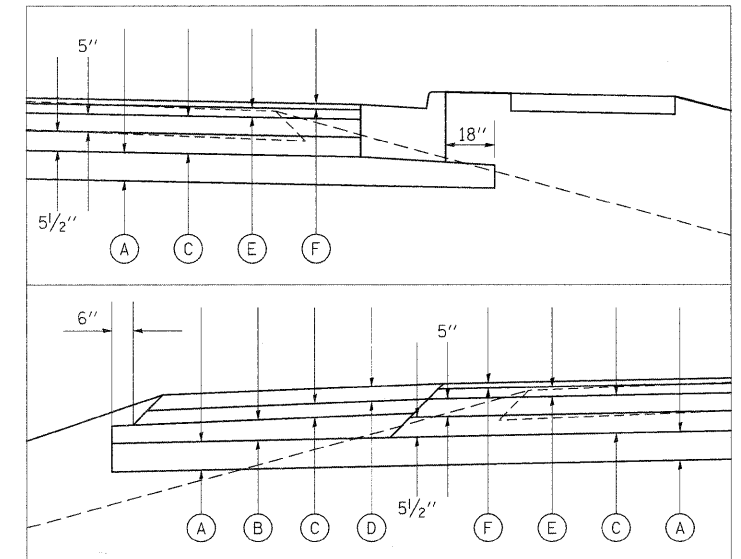


TO BE USED:  
STA 854+54.00 TO STA 856+00.00

LEGEND

- |                                                 |                                                                               |
|-------------------------------------------------|-------------------------------------------------------------------------------|
| ① EXISTING SUBBASE GRANULAR MATERIAL, TYPE A 4" | ②① PROPOSED HOT-MIX ASPHALT SURFACE REMOVAL, 1 1/2"                           |
| ② EXISTING PCC PAVEMENT 10"                     | ②② PROPOSED SUBBASE GRANULAR MATERIAL, TYPE A 8"                              |
| ③ EXISTING HOT-MIX ASPHALT OVERLAY 3/4"         | ②③ PROPOSED SUBBASE GRANULAR MATERIAL, TYPE C                                 |
| ④ EXISTING HOT-MIX ASPHALT SHOULDER 8"          | ②④ PROPOSED HOT-MIX ASPHALT PAVEMENT (FULL-DEPTH), 14 3/4"                    |
| ⑤ EXISTING CONCRETE MEDIAN SURFACE 4"           | ②⑤ PROPOSED HOT-MIX ASPHALT SHOULDERS, 8"                                     |
| ⑥ EXISTING COMBINATION C&G TYPE B-6.12          | ②⑥ PROPOSED COMBINATION CONCRETE CURB & GUTTER, TYPE B-6.24                   |
| ⑦ EXISTING BARRIER CURB, SPECIAL                | ②⑦ PROPOSED POLYMERIZED HOT-MIX ASPHALT SURFACE COURSE, MIX "E", N105, 1 1/2" |
| ⑧ EXISTING COMBINATION C&G TYPE B-6.24          | ②⑧ PROPOSED CONCRETE MEDIAN SURFACE 4"                                        |
| ⑨ EXISTING SOLID MEDIAN, SB-6.06                | ②⑨ PROPOSED SUBBASE GRANULAR MATERIAL, TYPE A 6"                              |
| ⑩ EXISTING PCC PAVEMENT 13"                     | ③① PROPOSED CONCRETE MEDIAN, TYPE SB-6.06                                     |
| ⑪ EXISTING SUBBASE GRANULAR MATERIAL, TYPE A 7" | ③② PROPOSED PORTLAND CEMENT CONCRETE SIDEWALK, 5"                             |
| PROPOSED PAVEMENT REMOVAL                       | ③③ PROPOSED HOT-MIX ASPHALT SURFACE REMOVAL, 3/4"                             |
| PROPOSED PAVED SHOULDER REMOVAL                 | ③④ PROPOSED POLYMERIZED LEVELING BINDER (MACHINE METHOD), N105, 1 3/4"        |
| PROPOSED COMBINATION C&G REMOVAL                | PROPOSED MEDIAN REMOVAL                                                       |
| PROPOSED HMA SURFACE REMOVAL                    | PROPOSED MEDIAN SURFACE REMOVAL                                               |

PAVING DETAILS



- Ⓐ PROPOSED SUBBASE GRANULAR MATERIAL, TYPE A 8"
- Ⓑ PROPOSED SUBBASE GRANULAR MATERIAL, TYPE C
- Ⓒ HOT-MIX ASPHALT BINDER COURSE, N90, IL-19.0\*
- Ⓓ HOT-MIX ASPHALT SURFACE COURSE, MIX C, N70 3" MAX\*
- Ⓔ POLYMERIZED HMA BINDER COURSE, N105, IL-19.0, 2 3/4"\*
- Ⓕ POLYMERIZED HMA SURFACE COURSE, MIX E, N105, 1 1/2"

\* FOR INFORMATION ONLY - NOT PAY ITEMS  
SEE MIX DESIGN TABLES FOR MORE INFORMATION

FILE NAME -	USER NAME - thomashf	DESIGNED -	REVISED -	<b>STATE OF ILLINOIS DEPARTMENT OF TRANSPORTATION</b>	<b>TYPICAL SECTIONS FAP 331 (IL 13)</b>	F.A.P. RTE.	SECTION	COUNTY	TOTAL SHEETS	SHEET NO.	
ci:\pwork\pwork\thomashf\d0157472\78155-sh1-misc.dgn	5-sh1-misc.dgn	DRAWN -	REVISED -			331	(1X-1R-1RS-2,N-2,TS-3	WILLIAMSON	167	21	
PLOT SCALE = 50.0000 ' / IN.		CHECKED -	REVISED -			SCALE: SHEET NO. OF SHEETS STA. TO STA.		CONTRACT NO. 78155			
PLOT DATE = 4/19/2011		DATE -	REVISED -			ILLINOIS FED. AID PROJECT					