

STAGE 4 NOTES:

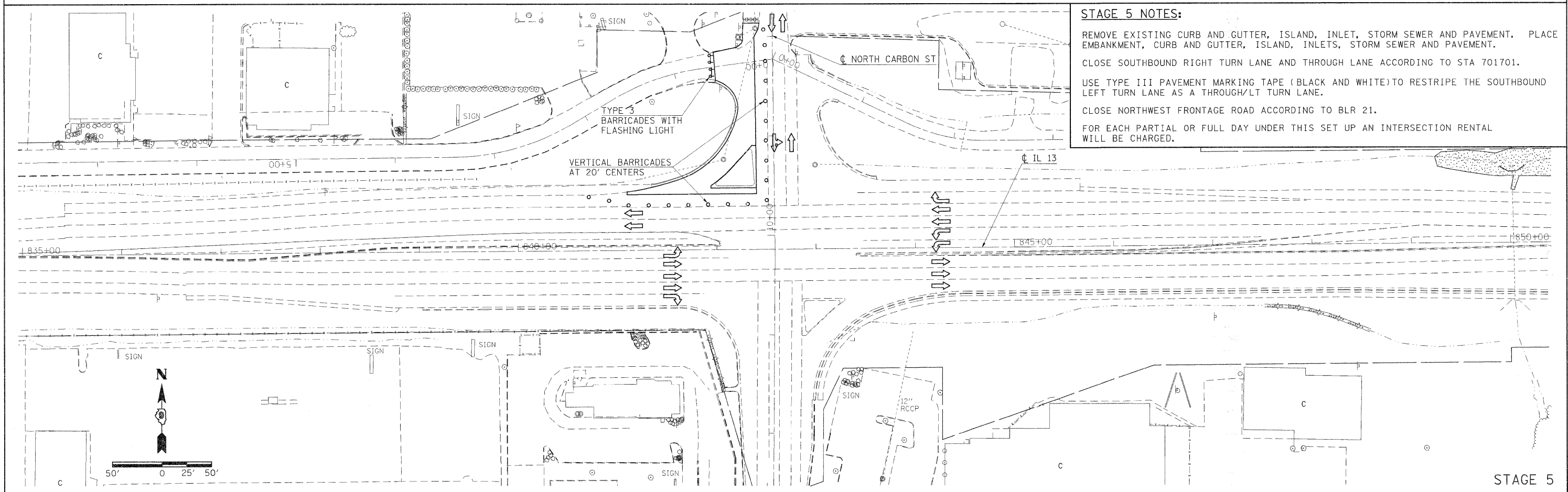
REMOVE EXISTING SHOULDER, PAVEMENT AND CURB AND GUTTER. PLACE EMBANKMENT, CURB AND GUTTER AND PCC PAVEMENT.

CLOSE WESTBOUND RIGHT TURN LANE ACCORDING TO STA 701701

USE TYPE III PAVEMENT MARKING TAPE (BLACK AND WHITE) TO CHANGE THE SOUTHBOUND LEFT TURN LANE TO A NORTHBOUND INGRESS LANE AS DIRECTED BY THE ENGINEER.

FOR EACH PARTIAL OR FULL DAY UNDER THIS SET UP AN INTERSECTION RENTAL WILL BE CHARGED.

STAGE 4



STAGE 5 NOTES:

REMOVE EXISTING CURB AND GUTTER, ISLAND, INLET, STORM SEWER AND PAVEMENT. PLACE EMBANKMENT, CURB AND GUTTER, ISLAND, INLETS, STORM SEWER AND PAVEMENT.

CLOSE SOUTHBOUND RIGHT TURN LANE AND THROUGH LANE ACCORDING TO STA 701701.

USE TYPE III PAVEMENT MARKING TAPE (BLACK AND WHITE) TO RESTRIPE THE SOUTHBOUND LEFT TURN LANE AS A THROUGH/LT TURN LANE.

CLOSE NORTHWEST FRONTAGE ROAD ACCORDING TO BLR 21.

FOR EACH PARTIAL OR FULL DAY UNDER THIS SET UP AN INTERSECTION RENTAL WILL BE CHARGED.

STAGE 5

FILE NAME =	USER NAME = thomashf	DESIGNED -	REVISED -	STATE OF ILLINOIS DEPARTMENT OF TRANSPORTATION	STAGING PLAN STAGES 4 & 5	F.A.P. RTE.	SECTION	COUNTY	TOTAL SHEETS	SHEET NO.
c:\pwork\pwork\thomashf\0157472\staging.dgn	DRAWN -	REVISED -	331			(1X-1R-1,RS-2,N-2,TS-3	WILLIAMSON	167	57	
PLOT SCALE = 5/8,000/00 "/> IN.	CHECKED -	REVISED -	CONTRACT NO. 78155							
PLOT DATE = 3/22/2011	DATE -	REVISED -	ILLINOIS FED. AID PROJECT							
					SCALE: 1"=50'	SHEET NO. OF SHEETS		STA. TO STA.		