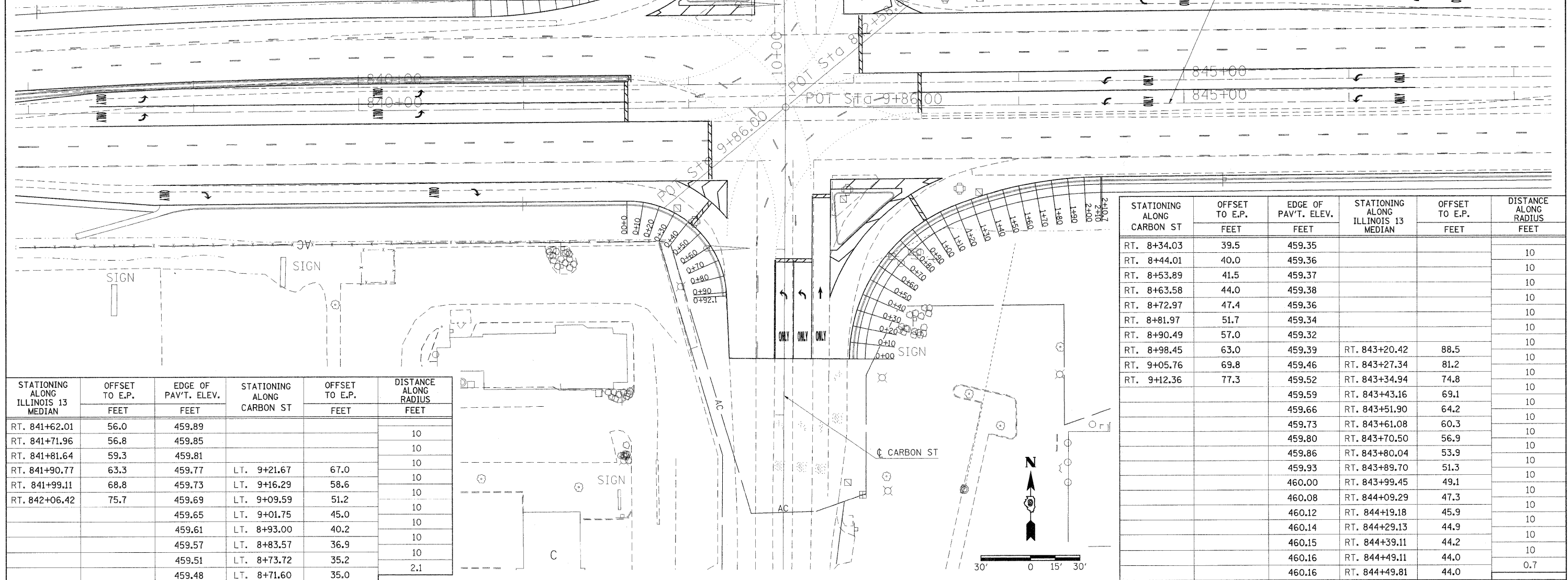


STATIONING ALONG CARBON ST	OFFSET TO E.P.	EDGE OF PAV'T. ELEV.	STATIONING ALONG ILLINOIS 13 MEDIAN	OFFSET TO E.P.	DISTANCE ALONG RADIUS
	FEET	FEET		FEET	FEET
LT. 11+56.48	57.8	461.29			
LT. 11+52.20	48.8	461.04			10
LT. 11+45.59	41.3	460.79			10
LT. 11+36.78	36.7	460.54			10
LT. 11+26.90	35.6	460.29			10
LT. 11+17.15	37.8	460.04			10
LT. 11+07.74	41.1	459.79			10
LT. 10+98.75	45.5	459.54			10
LT. 10+90.30	50.8	459.29			10
LT. 10+82.50	57.1	459.04			10
LT. 10+75.43	64.1	459.16			10
LT. 10+69.20	71.9	459.29	LT. 841+86.38	82.9	10
LT. 10+63.86	80.4	459.41	LT. 841+77.95	77.5	10
LT. 10+59.50	89.4	459.53	LT. 841+68.98	73.1	10
		459.65	LT. 841+59.57	69.7	10
		459.78	LT. 841+49.98	66.9	10
		459.90	LT. 841+40.30	64.4	10
		459.89	LT. 841+30.54	62.2	10
		459.88	LT. 841+20.72	60.3	10
		459.87	LT. 841+10.84	58.8	10
		459.86	LT. 841+00.91	57.6	10
		459.85	LT. 840+90.95	56.7	10
		459.85	LT. 840+80.96	56.2	10
		459.84	LT. 840+70.97	56.0	10
		459.84	LT. 840+69.87	56.0	1.1

STATIONING ALONG ILLINOIS 13 MEDIAN	OFFSET TO E.P.	EDGE OF PAV'T. ELEV.	STATIONING ALONG CARBON ST	OFFSET TO E.P.	DISTANCE ALONG RADIUS
	FEET	FEET		FEET	FEET
LT. 843+74.10	68.0	459.68			
LT. 843+64.13	68.7	459.73			10
LT. 843+54.37	70.8	459.59	RT. 10+56.43	96.0	10
LT. 843+45.01	74.3	459.45	RT. 10+59.96	86.6	10
LT. 843+36.24	79.1	459.31	RT. 10+64.79	77.9	10
		459.17	RT. 10+70.81	69.9	10
		459.23	RT. 10+77.91	62.9	10
		459.42	RT. 10+85.94	56.9	10
		459.61	RT. 10+94.73	52.2	10
		459.80	RT. 11+04.11	48.7	10
		459.99	RT. 11+13.73	46.0	10
		460.18	RT. 11+23.43	43.6	10
		460.30	RT. 11+33.22	41.5	10
		460.42	RT. 11+43.06	39.8	10
		460.54	RT. 11+52.96	38.4	10
		460.66	RT. 11+62.90	37.3	10
		460.78	RT. 11+72.87	36.5	10
		460.90	RT. 11+82.86	36.1	10
		xxx.xx	RT. 11+90.59	36.0	7.7



STATIONING ALONG ILLINOIS 13 MEDIAN	OFFSET TO E.P.	EDGE OF PAV'T. ELEV.	STATIONING ALONG CARBON ST	OFFSET TO E.P.	DISTANCE ALONG RADIUS
	FEET	FEET		FEET	FEET
RT. 841+62.01	56.0	459.89			
RT. 841+71.96	56.8	459.85			10
RT. 841+81.64	59.3	459.81			10
RT. 841+90.77	63.3	459.77	LT. 9+21.67	67.0	10
RT. 841+99.11	68.8	459.73	LT. 9+16.29	58.6	10
RT. 842+06.42	75.7	459.69	LT. 9+09.59	51.2	10
		459.65	LT. 9+01.75	45.0	10
		459.61	LT. 8+93.00	40.2	10
		459.57	LT. 8+83.57	36.9	10
		459.51	LT. 8+73.72	35.2	10
		459.48	LT. 8+71.60	35.0	2.1

STATIONING ALONG CARBON ST	OFFSET TO E.P.	EDGE OF PAV'T. ELEV.	STATIONING ALONG ILLINOIS 13 MEDIAN	OFFSET TO E.P.	DISTANCE ALONG RADIUS
	FEET	FEET		FEET	FEET
RT. 8+34.03	39.5	459.35			10
RT. 8+44.01	40.0	459.36			10
RT. 8+53.89	41.5	459.37			10
RT. 8+63.58	44.0	459.38			10
RT. 8+72.97	47.4	459.36			10
RT. 8+81.97	51.7	459.34			10
RT. 8+90.49	57.0	459.32			10
RT. 8+98.45	63.0	459.39	RT. 843+20.42	88.5	10
RT. 9+05.76	69.8	459.46	RT. 843+27.34	81.2	10
RT. 9+12.36	77.3	459.52	RT. 843+34.94	74.8	10
		459.59	RT. 843+43.16	69.1	10
		459.66	RT. 843+51.90	64.2	10
		459.73	RT. 843+61.08	60.3	10
		459.80	RT. 843+70.50	56.9	10
		459.86	RT. 843+80.04	53.9	10
		459.93	RT. 843+89.70	51.3	10
		460.00	RT. 843+99.45	49.1	10
		460.08	RT. 844+09.29	47.3	10
		460.12	RT. 844+19.18	45.9	10
		460.14	RT. 844+29.13	44.9	10
		460.15	RT. 844+39.11	44.2	10
		460.16	RT. 844+49.11	44.0	10
		460.16	RT. 844+49.81	44.0	0.7