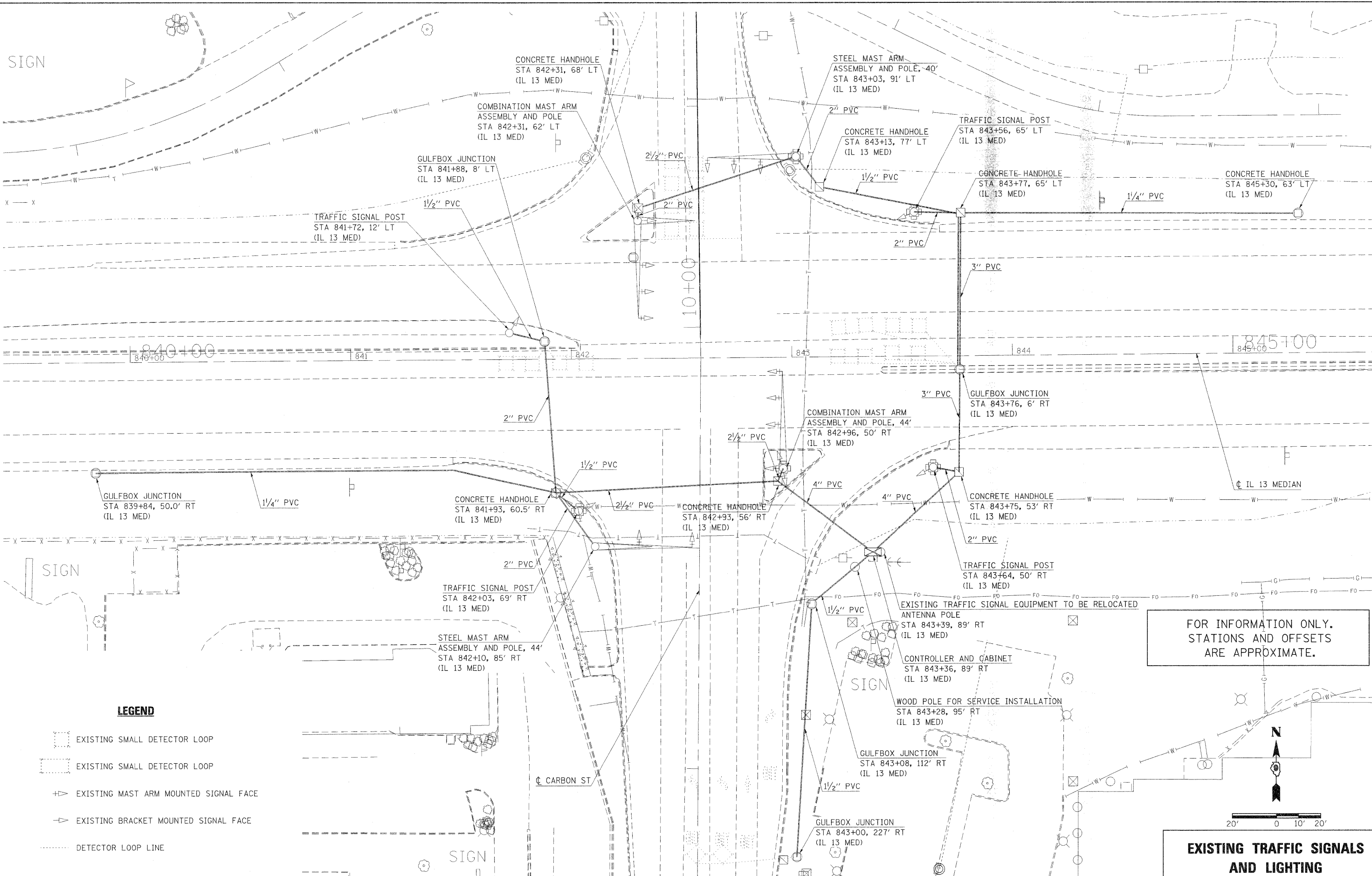
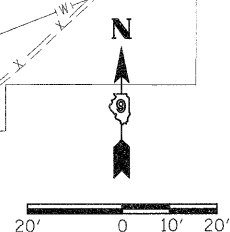


SIGN



FOR INFORMATION ONLY.
STATIONS AND OFFSETS
ARE APPROXIMATE.



EXISTING TRAFFIC SIGNALS AND LIGHTING

F.A.P. RTE.	SECTION	COUNTY	TOTAL SHEETS	SHEET NO.
331	(1X-1R-1,RS-2,N-2,TS-3	WILLIAMSON	167	79
CONTRACT NO. 78155				
ILLINOIS FED. AID PROJECT				

LEGEND

- EXISTING SMALL DETECTOR LOOP
- EXISTING SMALL DETECTOR LOOP
- EXISTING MAST ARM MOUNTED SIGNAL FACE
- EXISTING BRACKET MOUNTED SIGNAL FACE
- DETECTOR LOOP LINE

STATE OF ILLINOIS
DEPARTMENT OF TRANSPORTATION

EXISTING TRAFFIC SIGNALS
AND LIGHTING

SCALE: 1"=20' SHEET NO. OF SHEETS STA. TO STA.

USER NAME = knightsn	DESIGNED -	REVISED -
PLOT SCALE = 20,0000 "/ IN.	DRAWN -	REVISED -
PLOT DATE = 3/22/2011	CHECKED -	REVISED -
	DATE -	REVISED -

FILE NAME = c:\pwworkspace\pwworkspace\100157472\78155-sht-79.dgn