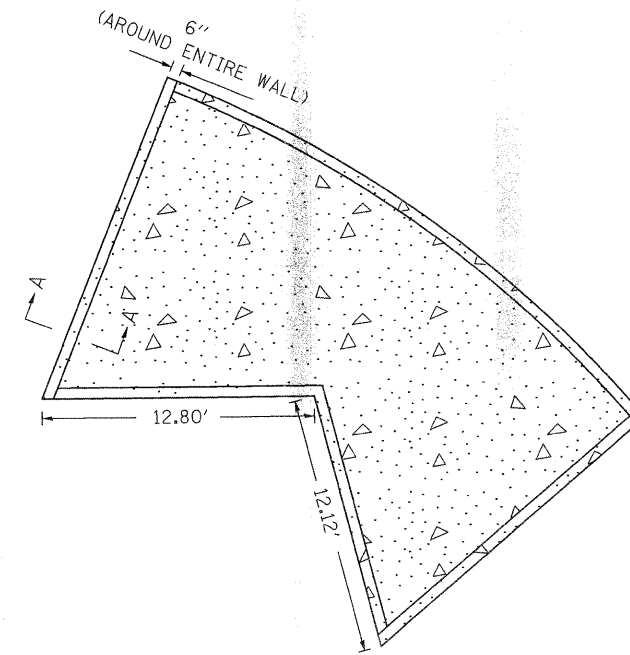
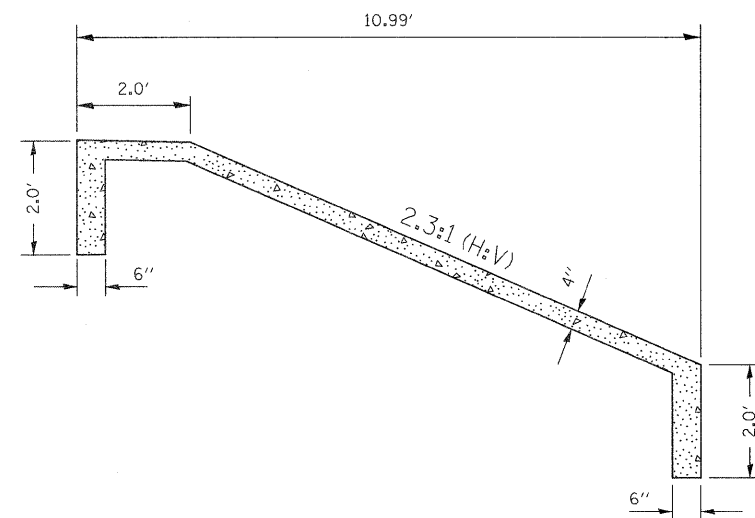


END SECTION VIEW

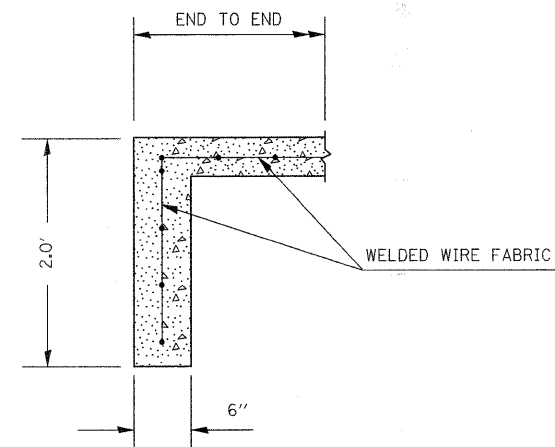


PLAN VIEW

POINT	STATION (IL 13 MED)	OFFSET
SW CORNER	841+77.45	77.71 RT
NW CORNER	841+83.48	62.75 RT
SE CORNER	841+93.29	89.43 RT
NE CORNER	842+05.77	78.83 RT



MID SECTION VIEW @ 0+40 (SW QUAD CARBON)



SECTION A-A

NOTE: SLOPE WALL SHALL BE REINFORCED WITH WELDED WIRE FABRIC, 6 IN. X 6 IN. - W4.0 X W4.0, WEIGHING 58 LBS. PER 100 SQ. FT.

FILE NAME =	USER NAME = knightsm	DESIGNED -	REVISED -
ct:\pwork\pwork\knightsm\0157472\7815-shd-deta1s.dgn		DRAWN -	REVISED -
		CHECKED -	REVISED -
		DATE -	REVISED -

STATE OF ILLINOIS  
DEPARTMENT OF TRANSPORTATION

DETAIL - SLOPE WALL

SCALE: SHEET NO. OF SHEETS STA. TO STA.

F.A.P. RTE.	SECTION	COUNTY	TOTAL SHEETS	SHEET NO.
331	(1X-1)R-1,RS-2,N-2,TS-3	WILLIAMSON	167	84
CONTRACT NO. 78155				
ILLINOIS FED. AID PROJECT				