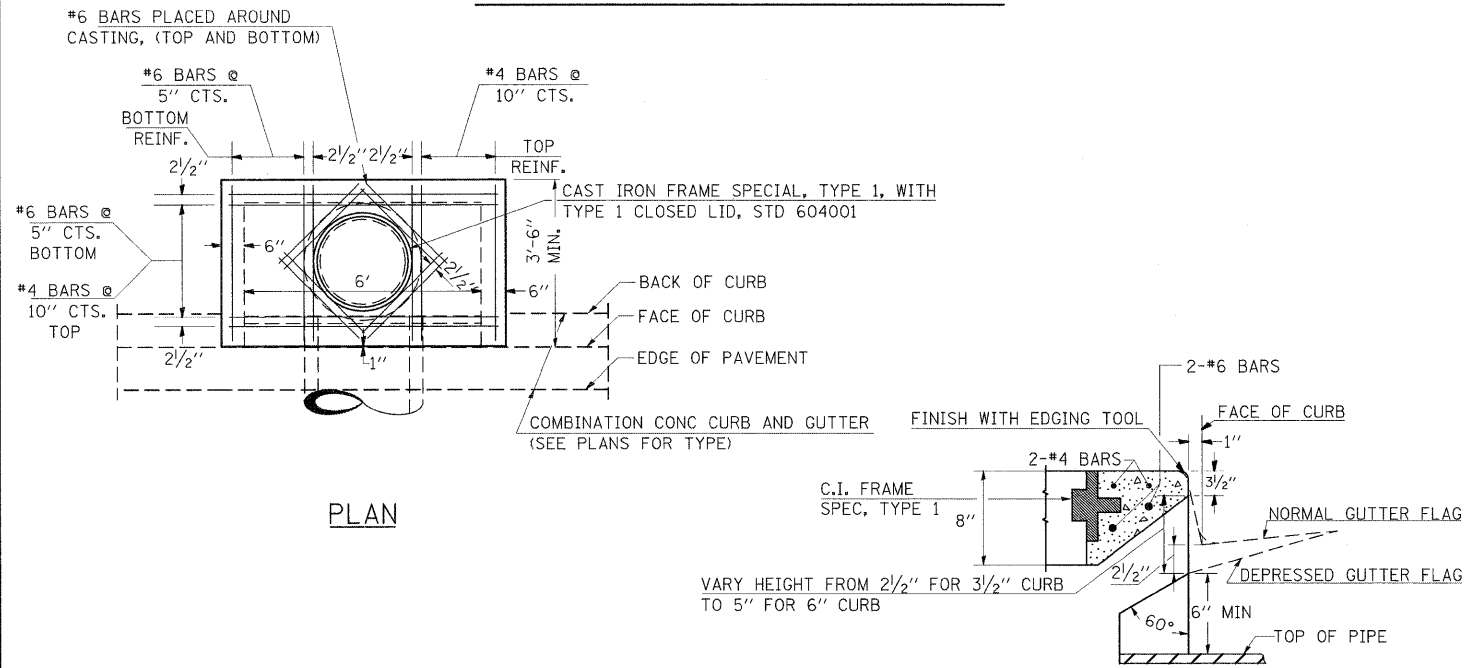
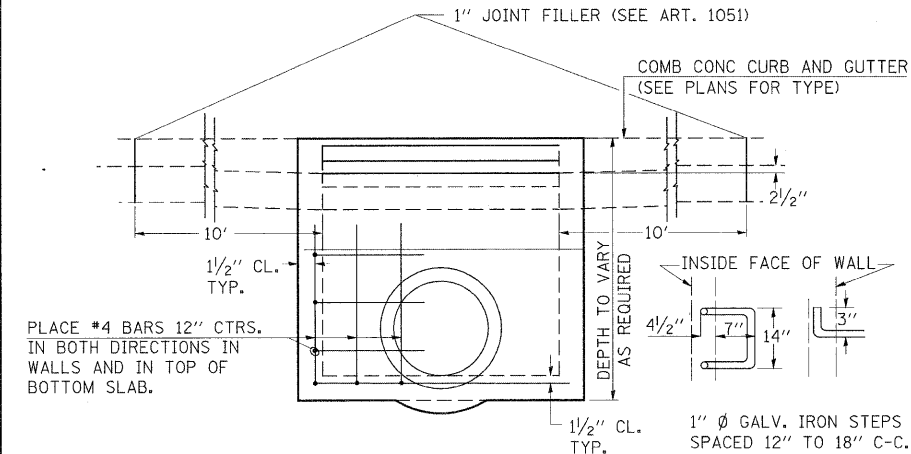


DETAILS OF INLET SPECIAL



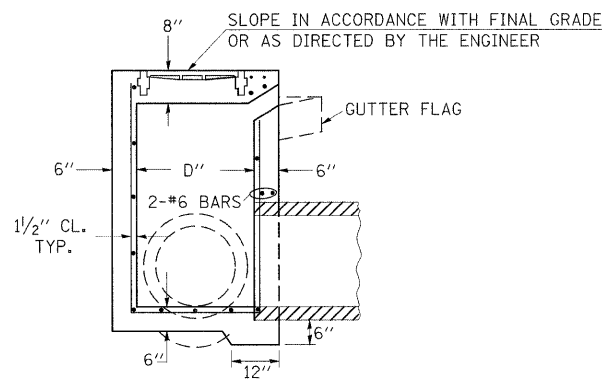
PLAN

SECTION AT WEIR



ELEVATION

DESIGN	PIPE DIA	"D"
A	18" & LESS	2'-6"
B	21" & 24"	3'-0"
C	27" & 30"	3'-7"
D	33" & 36"	4'-2"
E	42"	4'-9"
F	48"	5'-0"
G	54"	6'-1"



SECTION

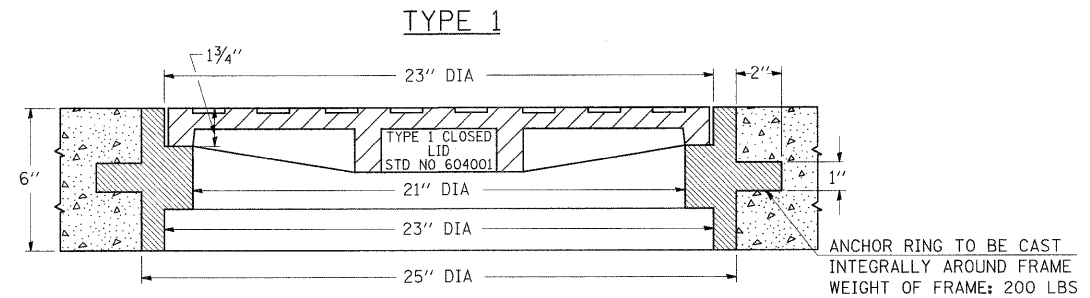
NOTE TO DESIGNER:

WHEN USING THIS STANDARD THE DESIGNER SHOULD ALSO CHECK BDE SPECIAL PROVISION 419 "PRECAST CONCRETE PRODUCTS".

REVISIONS			
REDRAWN	2-15-89	REVISED	3-26-08
REVISED	8-15-94	REVISED	
REVISED	1-19-99	REVISED	
REVISED	5-6-04	REVISED	

STD. 9-1

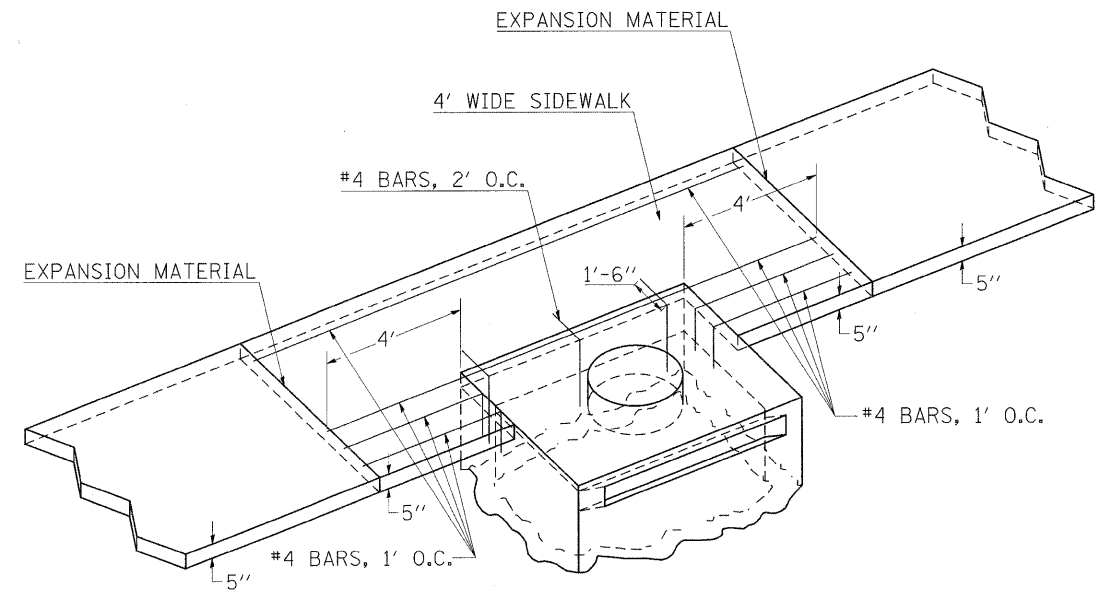
DETAILS OF CAST IRON FRAMES SPECIAL TYPE 1 WITH TYPE 1 CLOSED LID



THE FRAMES MAY BE MADE OF EITHER GRAY IRON CONFORMING TO THE STANDARD SPECIFICATIONS OR DUCTILE IRON CONFORMING TO THE SPECIFICATIONS FOR DUCTILE IRON CASTING, A.S.T.M. DESIGNATION: A536, GRADE 60-45-10.

REVISIONS	
REDRAWN	2-15-89
REVISED	12-14-01
REVISED	3-26-08

INLET/SIDEWALK JOINT



DRAWING NOT TO SCALE

NOTES:

- PAYMENT FOR THIS WORK SHALL BE AT THE CONTRACT UNIT PRICE PER SQUARE FOOT FOR PCC SIDEWALK 5". NO ADDITIONAL COMPENSATION WILL BE MADE FOR THE REBAR REINFORCEMENT.
- 5/8" HOOK BARS WITH THREADED COUPLING MAY BE USED IN LIEU OF THE #4 REBARS. (SEE STD 420001)

NOTES:

PROVIDE 1/2" CLEARANCE TYP. ALL REINFORCEMENT UNLESS OTHERWISE SPECIFIED.

CLASS S1 CONCRETE SHALL BE USED THROUGHOUT. SET FACE OF INLET 1" BEHIND FACE OF CURB. DEPRESS GUTTER FLOWLINE AT INLET 2 1/2" BELOW NORMAL GUTTER FLOWLINE. CONSTRUCT TRANSITION IN FLOWLINE IN 10 FEET EACH SIDE OF INLET. PIPES TO BE CONNECTED TO INLET AS SHOWN ON STORM SEWER LAYOUT.

INLETS WILL BE PAID FOR AT THE CONTRACT UNIT PRICE EACH FOR INLET, SPECIAL WHICH PRICE SHALL INCLUDE THE CAST IRON FRAME, SPECIAL, TYPE 1 WITH TYPE 1 CLOSED LID, THE REINFORCEMENT BARS, METAL STEPS AND JOINT FILLER.

**THE GALVANIZED IRON STEPS AS DETAILED HEREON ARE TYPICAL. STEPS OF OTHER DESIGN AND MATERIAL THAT WILL CONFORM TO THE MINIMUM REQUIREMENTS OF THE STEPS SHOWN, MAY BE USED WHEN APPROVED BY THE ENGINEER.

IF THE INLET IS NOT CAST IN PLACE THEN THE INLET SHALL BE PRODUCED ACCORDING TO THE DEPARTMENT'S CURRENT POLICY MEMORANDUM, "QUALITY CONTROL/QUALITY ASSURANCE PROGRAM FOR PRECAST CONCRETE PRODUCTS".

FILE NAME =	USER NAME = thomashf	DESIGNED -	REVISED -	STATE OF ILLINOIS DEPARTMENT OF TRANSPORTATION	DETAILS - INLET/SIDEWALK JOINT, TY. 1 FRAME, AND INLET SPECIAL	F.A.P. RTE.	SECTION	COUNTY	TOTAL SHEETS	SHEET NO.	
ct:\pwork\pwsdot\thomashf\d0157472\78155-sht-deta1.s.dgn	PLOT SCALE = 50.0000 "/> <td>CHECKED -</td> <td>REVISED -</td> <td>331</td> <td>(1X-1R-1,RS-2,N-2,TS-3</td> <td>WILLIAMSON</td> <td>167</td> <td>90</td>	CHECKED -	REVISED -			331	(1X-1R-1,RS-2,N-2,TS-3	WILLIAMSON	167	90	
PLOT DATE = 4/19/2011	DATE -	REVISED -	REVISED -			CONTRACT NO. 78155					
						SCALE:	SHEET NO.	OF	SHEETS	STA.	TO

ILLINOIS FED. AID PROJECT