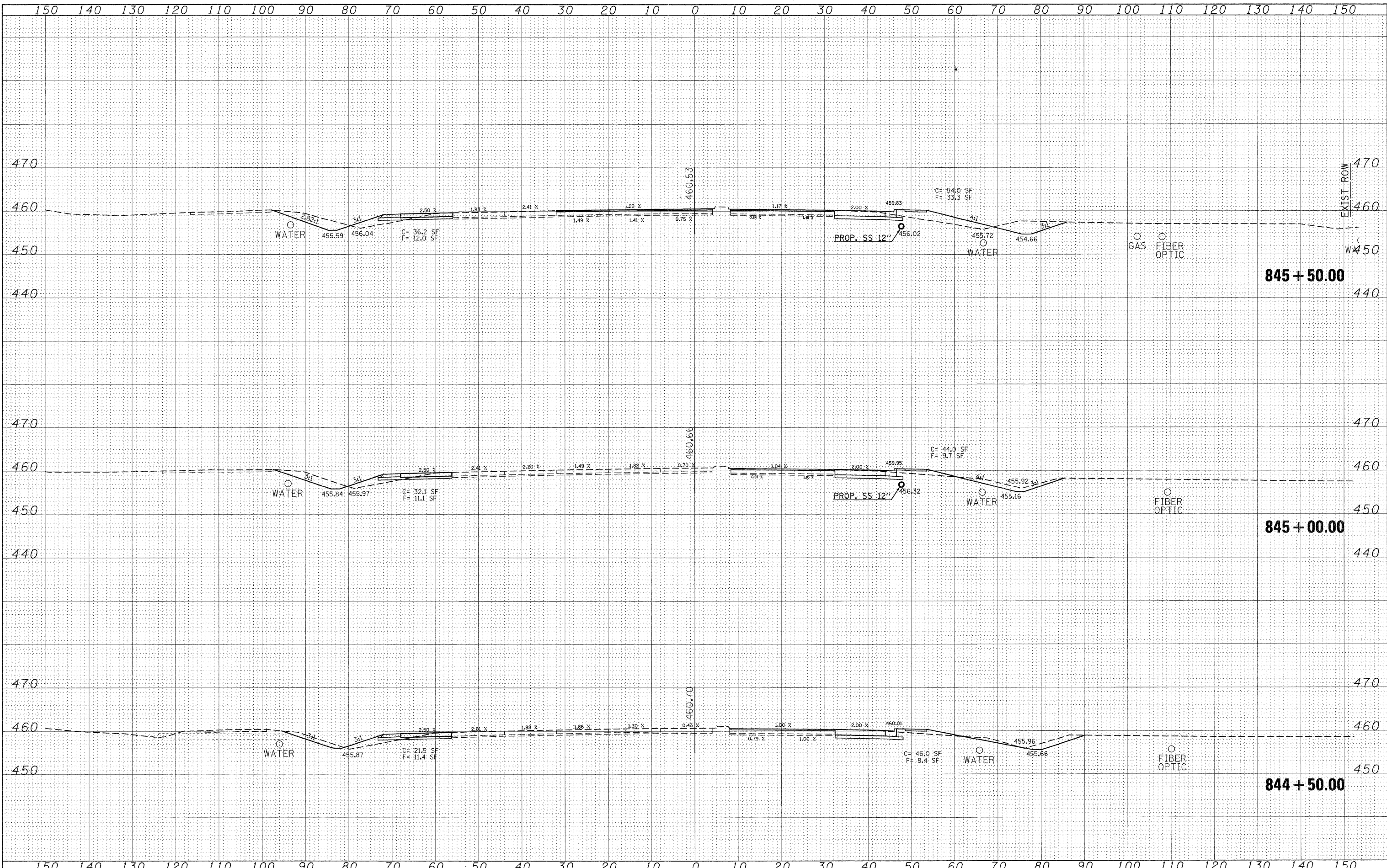


BY \_\_\_\_\_ DATE \_\_\_\_\_  
 SURVEYED \_\_\_\_\_  
 PLOTTED \_\_\_\_\_  
 NOTE BOOK \_\_\_\_\_  
 AREAS CHECKED \_\_\_\_\_

BY \_\_\_\_\_ DATE \_\_\_\_\_  
 SURVEYED \_\_\_\_\_  
 PLOTTED \_\_\_\_\_  
 NOTE BOOK \_\_\_\_\_  
 AREAS CHECKED \_\_\_\_\_



FILE NAME = c:\pwork\pwork\thomashf\0157472\78155-sht-13.dgn  
 USER NAME = thomashf

DESIGNED -  
 DRAWN -  
 CHECKED -  
 DATE -

REVISED -  
 REVISED -  
 REVISED -  
 REVISED -

**STATE OF ILLINOIS  
 DEPARTMENT OF TRANSPORTATION**

**IL 13  
 CROSS SECTIONS**

SCALE: 1"=10' SHEET NO. OF SHEETS STA. 844+50.00 TO STA. 845+50.00

F.A.P. RTE. 331	SECTION (IX-1R-1,RS-2,N-2,TS-3)	COUNTY WILLIAMSON	TOTAL SHEETS 167	SHEET NO. 102
CONTRACT NO. 78155			[ILLINOIS] FED. AID PROJECT	