

STATE OF ILLINOIS
DEPARTMENT OF TRANSPORTATION
DIVISION OF HIGHWAYS

**PROPOSED
HIGHWAY PLANS**

FAP ROUTE 332 (US 45/IL 34)
D9 CM PAVEMENT REPAIR 2011-1
PAVEMENT REPAIR
SALINE COUNTY

F.A.P. RTE.	SECTION	COUNTY	TOTAL SHEETS	SHEET NO.
331/332	D9 CM PAVEMENT REPAIR 2011-1	SALINE	6	1
ILLINOIS CONTRACT NO. 78240				

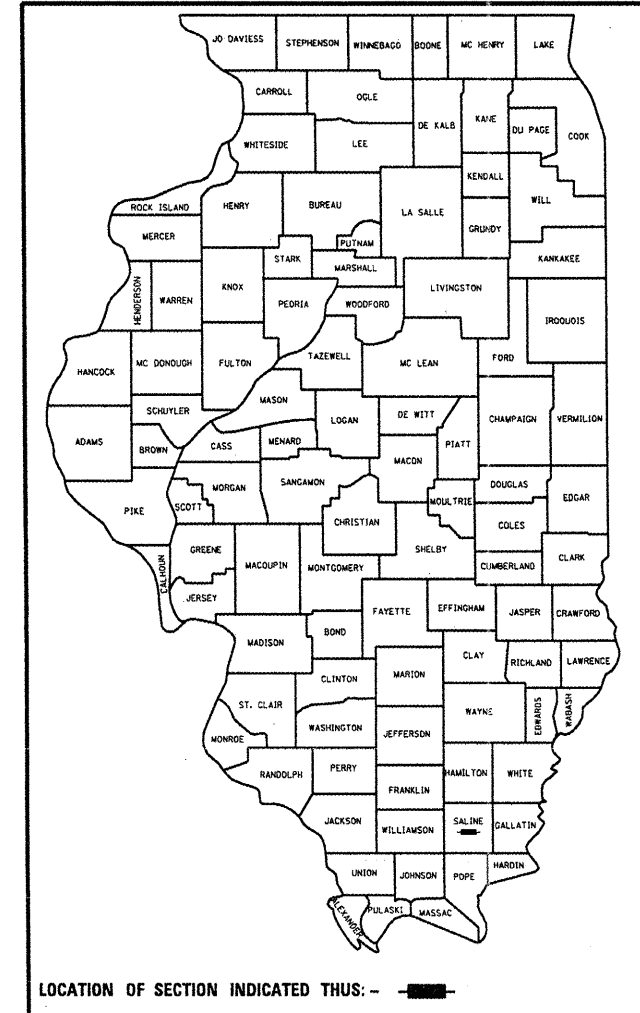
FOR INDEX OF SHEETS, SEE SHEET NO. 2
FOR SUMMARY OF QUANTITIES, SEE SHEET NO. 3

TRAFFIC DATA

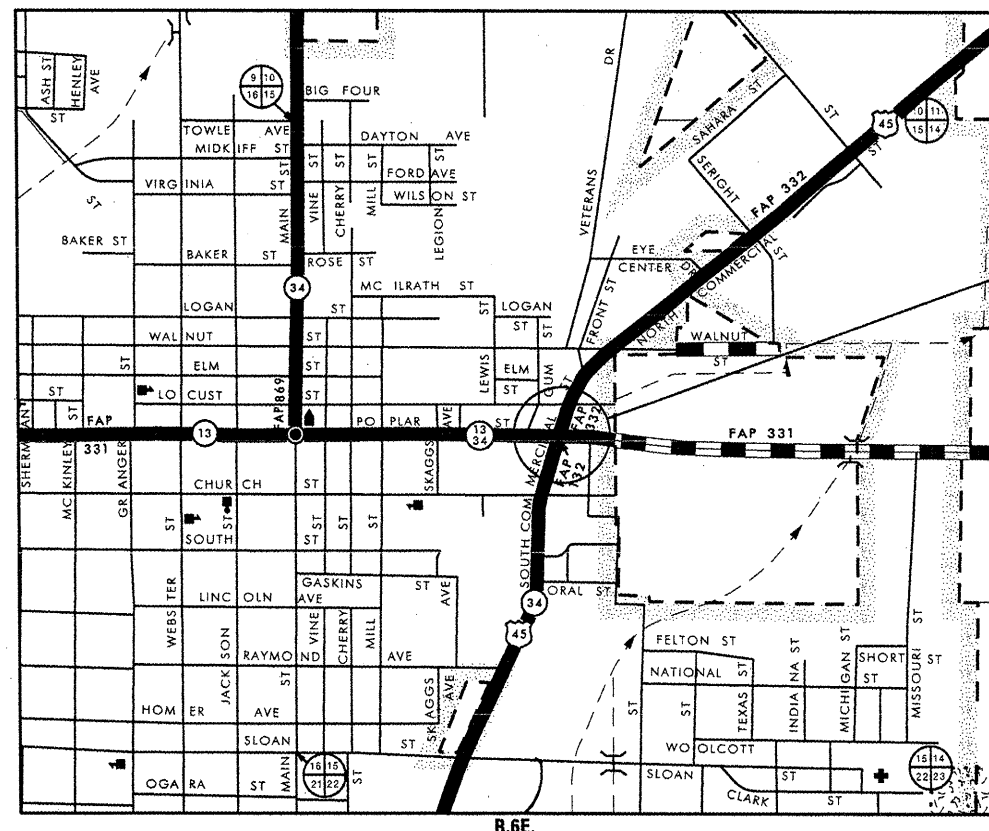
US 45 (NORTH LEG)	2009 ADT = 16100 WITH 6.2% TRUCKS
US 45 /IL 34 (SOUTH LEG)	2009 ADT = 17500 WITH 8.6% TRUCKS
IL 13 /IL 34 (WEST LEG)	2009 ADT = 12900 WITH 4.5% TRUCKS
IL 13 (EAST LEG)	2009 ADT = 4950 WITH 6.6% TRUCKS

TOWNSHIP: HARRISBURG

D-99-017-11

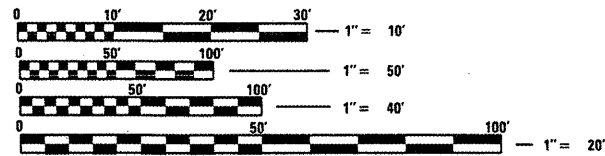


C-99-027-11



R.6E.

PROJECT LOCATION (IL13 / US45)



FULL SIZE PLANS HAVE BEEN PREPARED USING STANDARD ENGINEERING SCALES. REDUCED SIZED PLANS WILL NOT CONFORM TO STANDARD SCALES. IN MAKING MEASUREMENTS ON REDUCED PLANS, THE ABOVE SCALES MAY BE USED.

J.U.L.I.E.
JOINT UTILITY LOCATION INFORMATION FOR EXCAVATION
1-800-892-0123
OR 811

PROJECT ENGINEER: PATRICK NAAS
PROJECT MANAGER: SUSAN POE

CONTRACT NO. 78240

STATE OF ILLINOIS
DEPARTMENT OF TRANSPORTATION
DIVISION OF HIGHWAYS

SUBMITTED *March 31, 2011*
My [Signature]
DEPUTY DIRECTOR OF HIGHWAYS, REGION ENGINEER

May 13, 2011
Scott E. Stitt, P.E.
ENGINEER OF DESIGN AND ENVIRONMENT

May 13, 2011
Christine M. Poedler
DIRECTOR OF HIGHWAYS, CHIEF ENGINEER

**PRINTED BY THE AUTHORITY
OF THE STATE OF ILLINOIS**

FILE NAME: c:\p-work\pando\roads\78240\hrr-plans\p...