

STATE OF ILLINOIS
DEPARTMENT OF TRANSPORTATION
DIVISION OF HIGHWAYS

**PROPOSED
HIGHWAY PLANS**

FAP ROUTE 332 (US 45/IL 34)
D9 CM PAVEMENT REPAIR 2011-1
PAVEMENT REPAIR
SALINE COUNTY

F.A.P. RTE.	SECTION	COUNTY	TOTAL SHEETS	SHEET NO.
331/332	D9 CM PAVEMENT REPAIR 2011-1	SALINE	6	1
ILLINOIS CONTRACT NO. 78240				

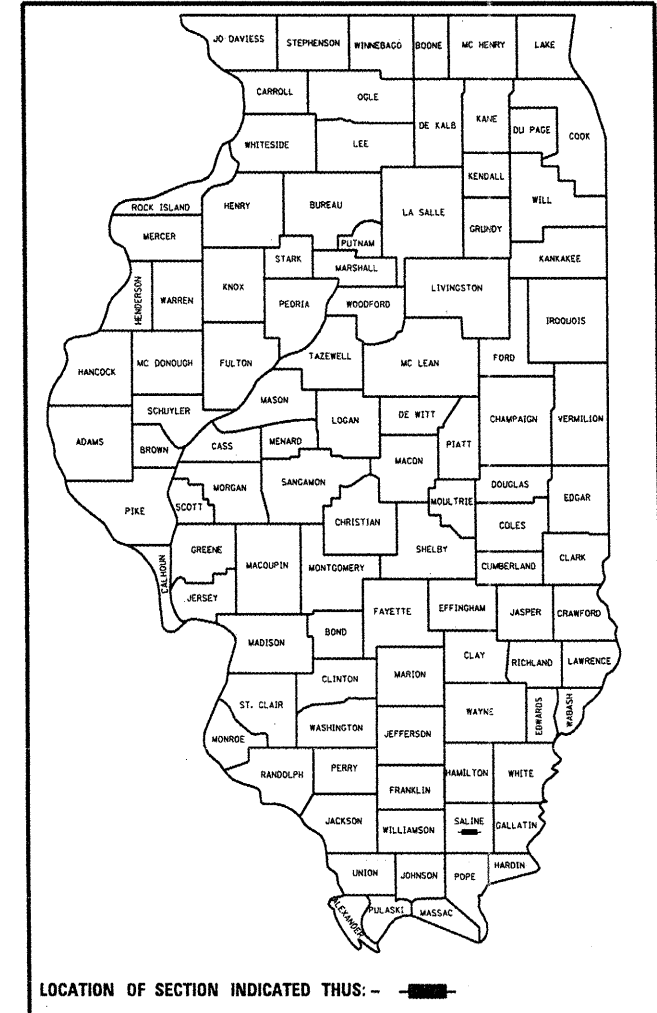
FOR INDEX OF SHEETS, SEE SHEET NO. 2
FOR SUMMARY OF QUANTITIES, SEE SHEET NO. 3

TRAFFIC DATA

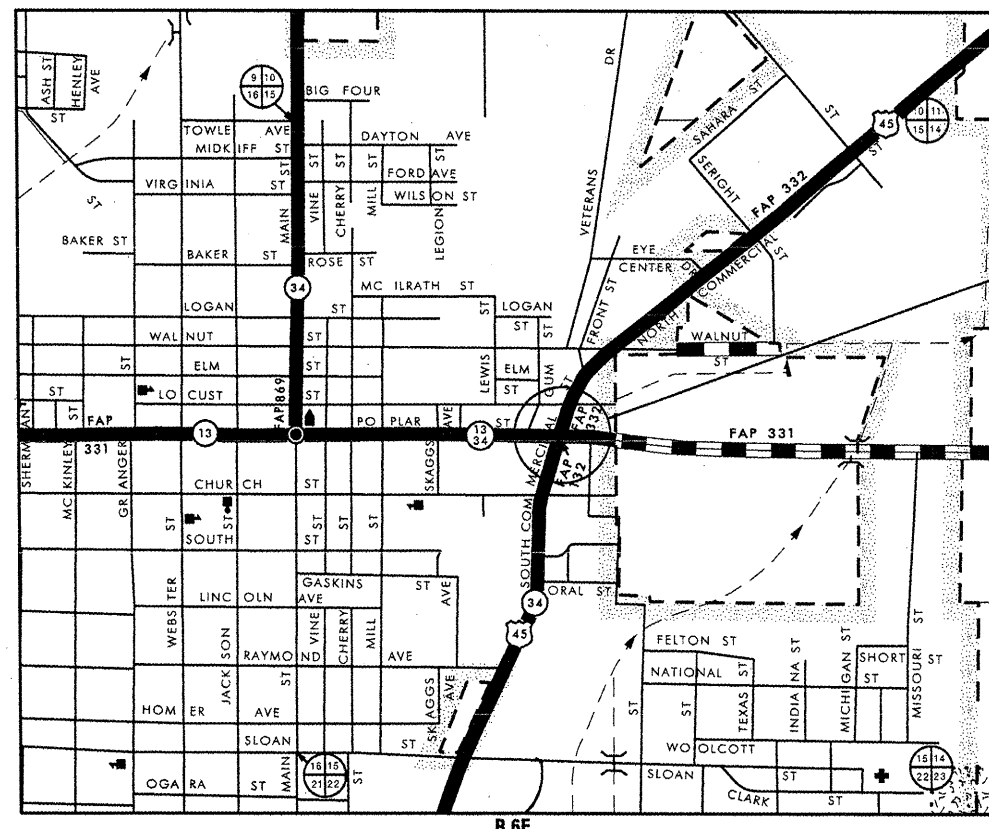
US 45 (NORTH LEG)	2009 ADT = 16100 WITH 6.2% TRUCKS
US 45 /IL 34 (SOUTH LEG)	2009 ADT = 17500 WITH 8.6% TRUCKS
IL 13 /IL 34 (WEST LEG)	2009 ADT = 12900 WITH 4.5% TRUCKS
IL 13 (EAST LEG)	2009 ADT = 4950 WITH 6.6% TRUCKS

TOWNSHIP: HARRISBURG

D-99-017-11

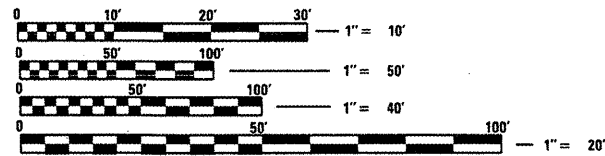


C-99-027-11



R.6E.

T.9S.



FULL SIZE PLANS HAVE BEEN PREPARED USING STANDARD ENGINEERING SCALES. REDUCED SIZED PLANS WILL NOT CONFORM TO STANDARD SCALES. IN MAKING MEASUREMENTS ON REDUCED PLANS, THE ABOVE SCALES MAY BE USED.

J.U.L.I.E.
JOINT UTILITY LOCATION INFORMATION FOR EXCAVATION
1-800-892-0123
OR 811

PROJECT ENGINEER: PATRICK NAAS
PROJECT MANAGER: SUSAN POE

CONTRACT NO. 78240

STATE OF ILLINOIS
DEPARTMENT OF TRANSPORTATION
DIVISION OF HIGHWAYS

SUBMITTED *March 31 2011*
Myt Hamis
DEPUTY DIRECTOR OF HIGHWAYS, REGION ENGINEER

May 13 2011
Scott E. Stett, P.E.
ENGINEER OF DESIGN AND ENVIRONMENT

May 13 2011
Christine M. Poedler
DIRECTOR OF HIGHWAYS, CHIEF ENGINEER

**PRINTED BY THE AUTHORITY
OF THE STATE OF ILLINOIS**

FILE NAME: c:\pwork\pwork\road\78240\h1\plan.dgn

GENERAL NOTES

ANY PAVEMENT MARKING THAT IS REMOVED OR DAMAGED DUE TO PATCHING OR WHITETOPPING REPAIR OPERATIONS WILL NOT BE REPLACED AS PART OF THIS CONTRACT.

INDEX OF SHEETS

- 1 COVER SHEET
- 2 GENERAL NOTES / INDEX OF SHEETS / LIST OF STANDARDS
- 3 SUMMARY OF QUANTITIES
- 4 TYPICAL SECTION
- 5 SCHEDULE (CLASS B PATCHING / WHITETOPPING REPAIR)
- 6 PLAN SHEETS

STANDARDS

000001-06	STANDARD SYMBOLS, ABBREVIATIONS, AND PATTERNS
001001-02	AREAS OF REINFORCEMENT BARS
001006	DECIMAL OF AN INCH AND OF A FOOT
420106-04	36' JOINTED PCC PAVEMENT
420701-02	PAVEMENT FABRIC
442101-07	CLASS B PATCHES
701602-05	URBAN LANE CLOSURE, MULTILANE, 2W WITH BIDIRECTIONAL LEFT TURN LANE
701701-07	URBAN LANE CLOSURE, MULTILANE INTERSECTION
701901-01	TRAFFIC CONTROL DEVICES
780001-02	TYPICAL PAVEMENT MARKINGS
701421-03	

Prepared By: Joe Zlanievic
DISTRICT STUDIES & PLANS ENGINEER

Examined By: James Travis Emey
DISTRICT LAND ACQUISITION ENGINEER

Examined By: Carrie Nelson
DISTRICT PROGRAM DEVELOPMENT ENGINEER

Examined By: Karl Kelly
DISTRICT OPERATIONS ENGINEER

Examined By: [Signature]
DISTRICT CONSTRUCTION ENGINEER

Examined By: Bruce W. Leebles
DISTRICT MATERIALS ENGINEER

Examined By: _____
DISTRICT PROJECT IMPLEMENTATION ENGINEER

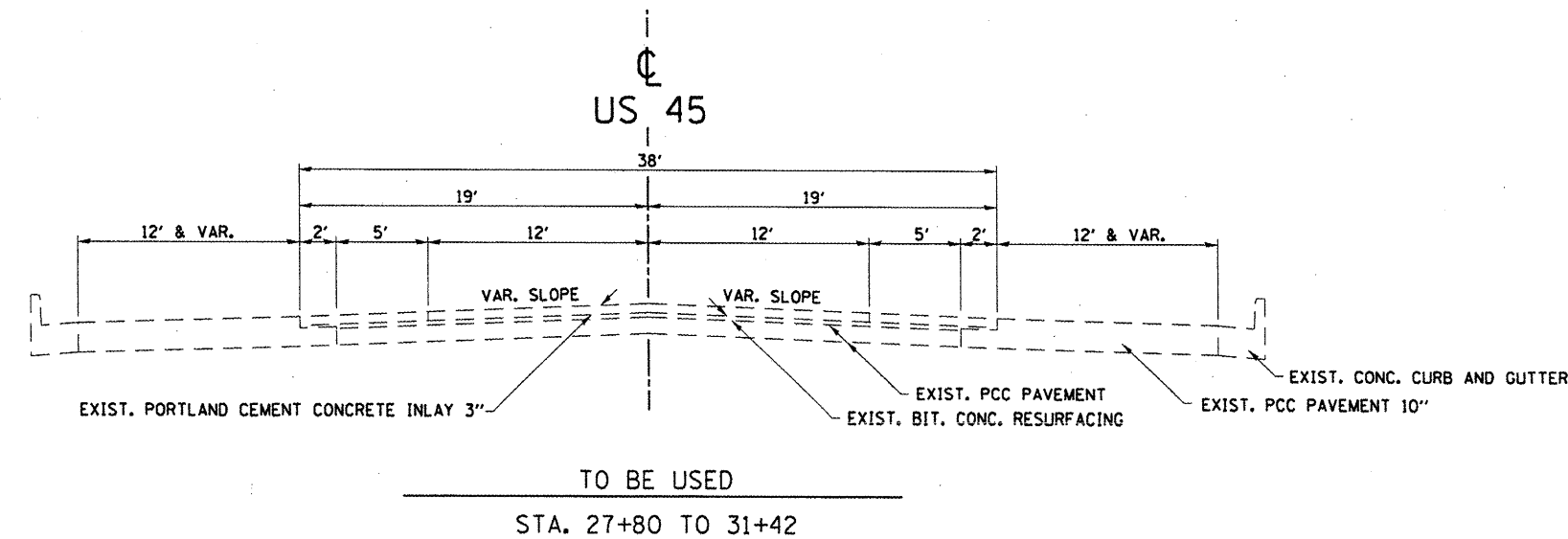
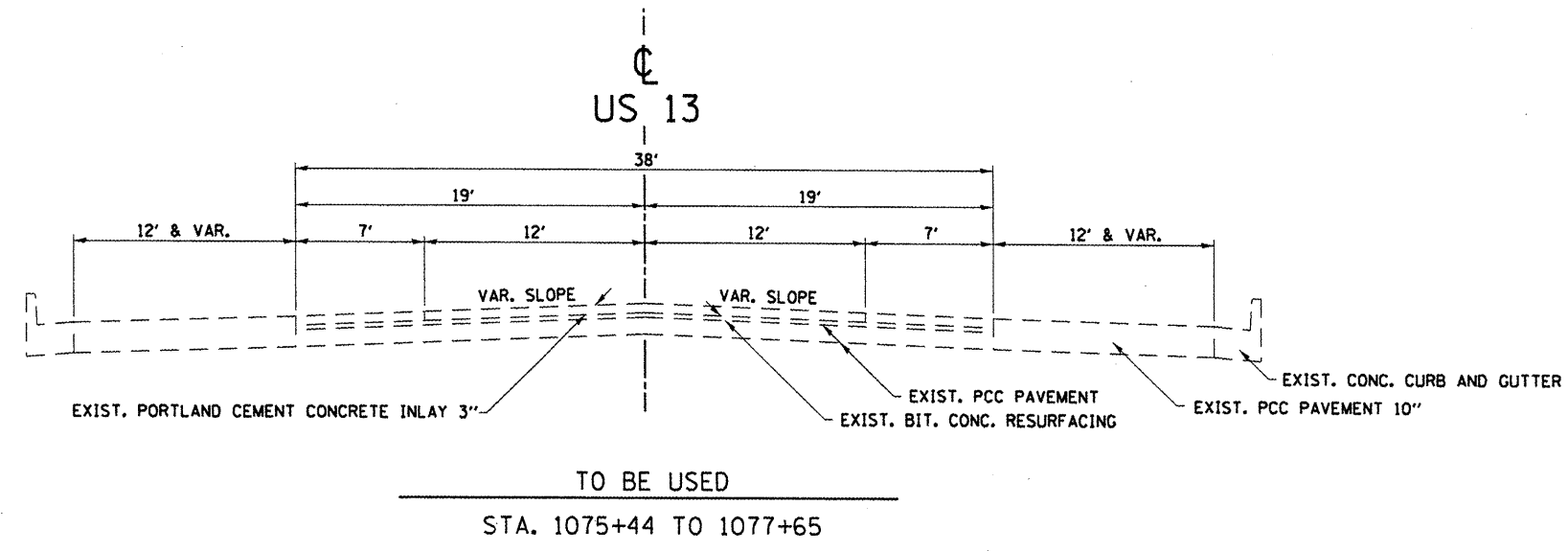
Approved By: Maria C. Kamis
DEPUTY DIRECTOR OF HIGHWAYS, REGION 5 ENGINEER

March 21 20 11
DATE

FILE NAME =	USER NAME = neosdp	DESIGNED -	REVISED -	STATE OF ILLINOIS DEPARTMENT OF TRANSPORTATION	GENERAL NOTES, INDEX OF SHEETS, LIST OF STANDARDS	F.A.P. RTE.	SECTION	COUNTY	TOTAL SHEETS	SHEET NO.
c:\pwork\pwork\neosdp\0253881\78240	shp-plan.dgn	DRAWN -	REVISED -			331/332/09	CM PAVEMENT REPAIR 2011-1	SALINE	6	2
PLOT SCALE = 100.0000' / IN.	CHECKED -	REVISED -	REVISED -			CONTRACT NO. 78240				
PLOT DATE = 3/15/2011	DATE -	REVISED -	REVISED -			ILLINOIS FED. AID PROJECT				
						SCALE:	SHEET NO.	OF	SHEETS	STA. TO STA.

SUMMARY OF QUANTITIES

CODE NO.	ITEM	CONST. TYPE CODE 0004	
		UNIT	TOTAL QUANTITIES 100% STATE
X4200830	PORTLAND CEMENT CONCRETE INLAY, 3"	SO YD	106
X4404400	PAVEMENT REMOVAL (SPECIAL)	SO YD	106
31100300	SUBBASE GRANULAR MATERIAL, TYPE A 4"	SO YD	267
42000501	PORTLAND CEMENT CONCRETE PAVEMENT 10" (JOINTED)	SO YD	267
42001300	PROTECTIVE COAT	SO YD	267
44000100	PAVEMENT REMOVAL	SO YD	267
44200976	CLASS B PATCHES, TYPE IV, 10 INCH	SO YD	25
44201299	DOWEL BARS 1 1/2"	EACH	28
44213100	PAVEMENT FABRIC	SO YD	292
44213200	SAW CUTS	FOOT	1824
67100100	MOBILIZATION	L SUM	1
70102632	TRAFFIC CONTROL AND PROTECTION, STANDARD 701602	L SUM	1
70102635	TRAFFIC CONTROL AND PROTECTION, STANDARD 701701	L SUM	1
70106800	CHANGEABLE MESSAGE SIGN	CAL MO	4



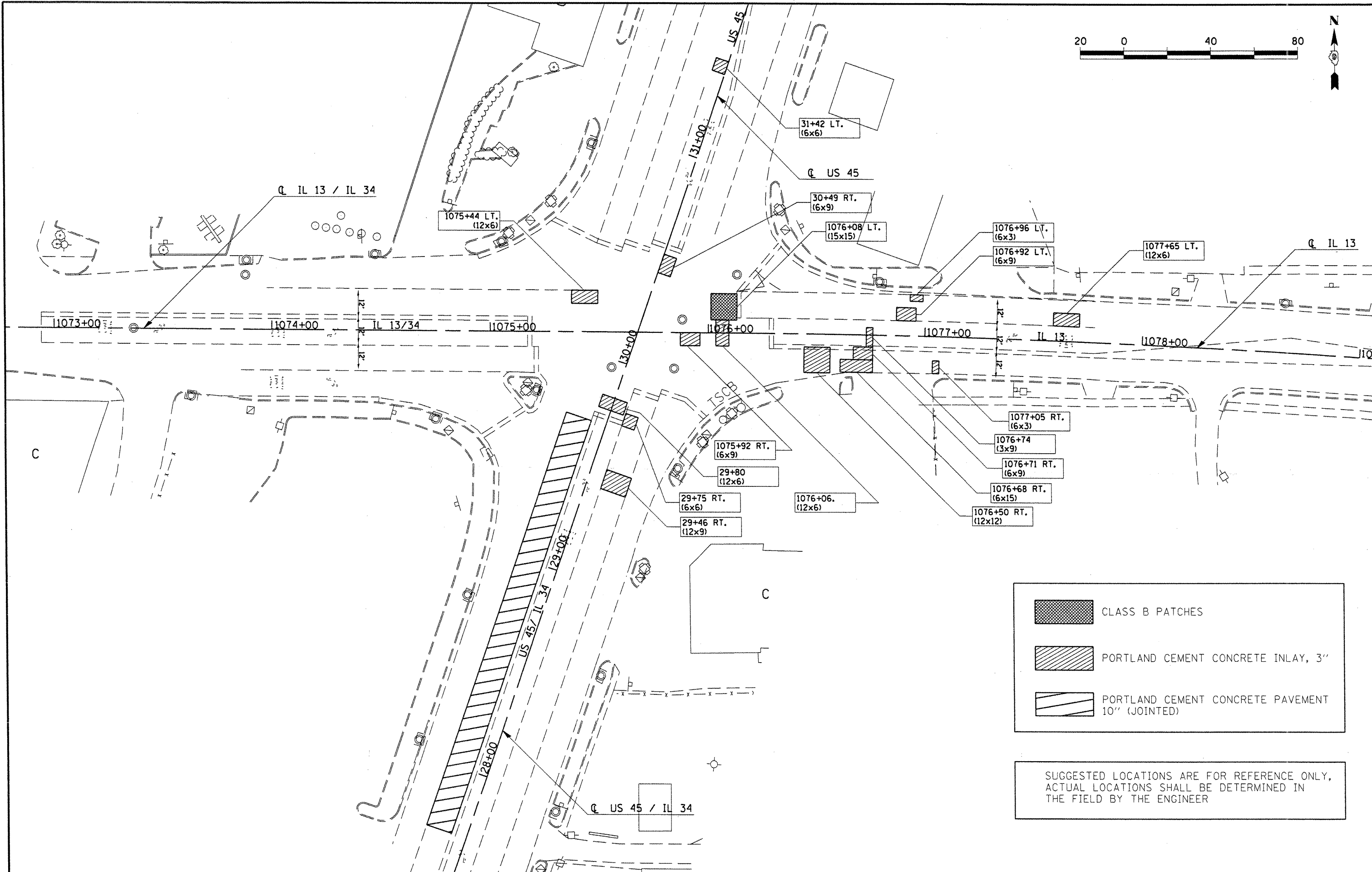
FILE NAME =	USER NAME = noesdp	DESIGNED -	REVISED -	STATE OF ILLINOIS DEPARTMENT OF TRANSPORTATION	TYPICAL SECTIONS			F.A. RTE.	SECTION	COUNTY	TOTAL SHEETS	SHEET NO.
et\pw\work\pwidot\noesdp\d0253881\78240	shp:plan.dgn	DRAWN -	REVISED -					331/332/D9	CM PAVEMENT REPAIR 2011-I	SALINE	6	4
PLOT SCALE = 18.0000 / IN.	CHECKED -	REVISED -	REVISED -		CONTRACT NO. 78240			ILLINOIS FED. AID PROJECT				
PLOT DATE = 3/28/2011	DATE -	REVISED -	REVISED -		SCALE:	SHEET NO.	OF SHEETS				STA.	TO STA.

PAVEMENT REPAIR AND PATCHING SCHEDULE

STATION (CENTER OF PATCH)	SIZE (FOOT)	PAVEMENT REMOVAL (SPECIAL) (SQ YD)	PAVEMENT REMOVAL (SQ YD)	SUBBASE GRANULAR MATERIAL TYPE A, 4" (SQ YD)	PORTLAND CEMENT CONCRETE PAVEMENT 10" (JOINTED) (SQ YD)	PROTECTIVE COAT (SQ YD)	PORTLAND CEMENT CONCRETE INLAY, 3" (SQ YD)	CLASS B PATCHES TYPE IV 10 INCH (SQ YD)	SAW CUTS (FOOT)	DOWEL BARS 1 1/2" (EACH)	PAVEMENT FABRIC (SQ YD)
US 45											
27+70 TO 29+70 LT.	200 X 12		267	267	267	267					267
29+46 RT.	12 X 9	12					12		186		
29+75 RT.	6 X 6	4					4		72		
29+80 C. L.	12 X 6	8					8		132		
30+49 RT.	6 X 9	6					6		102		
31+42 LT.	6 X 6	4					4		72		
IL 13											
1075+44 LT.	12 X 6	8					8		132		
1075+92 RT.	6 X 9	6					6		102		
1076+06 C. L.	12 X 6	8					8		*120		
1076+08 LT.	15 X 15							25	90	28	25
1076+50 RT.	12 X 12	16					16		240		
1076+68 RT.	6 X 15	10					10		*144		
1076+71 RT.	3 X 9	3					3		*54		
1076+74 C. L.	3 X 9	3					3		60		
1076+92 LT.	6 X 9	6					6		102		
1076+96 LT.	6 X 3	2					2		42		
1077+05 RT.	6 X 3	2					2		42		
1077+65 LT.	12 X 6	8					8		132		
TOTALS		106	267	267	267	267	106	25	1824	28	292

*SAWCUT QUANTITY HAS BEEN REDUCED DUE TO PROPOSED SAWCUT FROM ADJOINING PATCH

FILE NAME =	USER NAME = neesdp	DESIGNED -	REVISED -	STATE OF ILLINOIS DEPARTMENT OF TRANSPORTATION	SCHEDULES (PAVEMENT REPAIR AND PATCHING)	F.A. RTE.	SECTION	COUNTY	TOTAL SHEETS	SHEET NO.	
ct\pwork\puidot\neesdp\d0253881\78240	ght-plan.dgn	DRAWN -	REVISED -			331/332D9	CM PAVEMENT REPAIR 2011-1	SALINE	6	5	
	PLOT SCALE = 80.0000' / IN.	CHECKED -	REVISED -			CONTRACT NO. 78240					
	PLOT DATE = 3/28/2011	DATE -	REVISED -			ILLINOIS FED. AID PROJECT					
					SCALE:	SHEET NO. OF SHEETS STA.		TO STA.			



	CLASS B PATCHES
	PORTLAND CEMENT CONCRETE INLAY, 3"
	PORTLAND CEMENT CONCRETE PAVEMENT 10" (JOINTED)

SUGGESTED LOCATIONS ARE FOR REFERENCE ONLY, ACTUAL LOCATIONS SHALL BE DETERMINED IN THE FIELD BY THE ENGINEER

FILE NAME =	USER NAME = neesdp	DESIGNED -	REVISED -	STATE OF ILLINOIS DEPARTMENT OF TRANSPORTATION	CLASS B PATCHING AND WHITETOPPING REPAIR LOCATION SHEET	F.A. RTE.	SECTION	COUNTY	TOTAL SHEETS	SHEET NO.	
at:\pwork\pwidot\neesdp\d0253881\78240	ah:plan.dgn	DRAWN -	REVISED -			331/332D9	CM PAVEMENT REPAIR 2011-1	SALINE	6	6	
	PLOT SCALE = 40.0000' / IN.	CHECKED -	REVISED -			CONTRACT NO. 78240					
	PLOT DATE = 3/28/2011	DATE -	REVISED -			ILLINOIS FED. AID PROJECT					