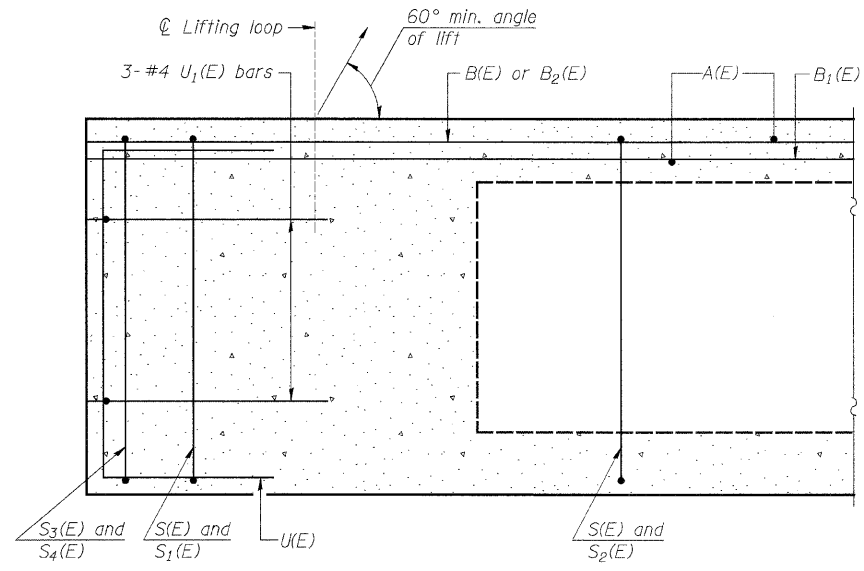
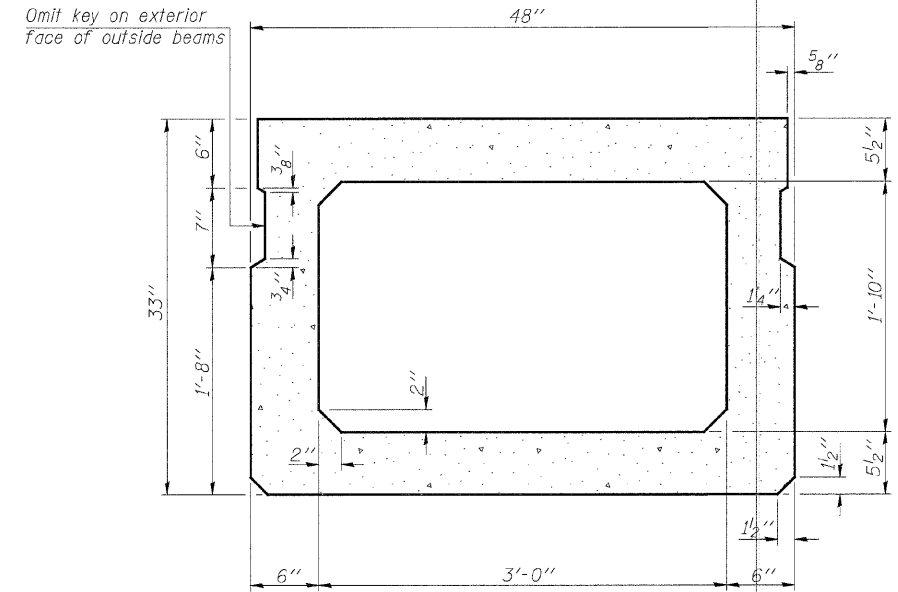


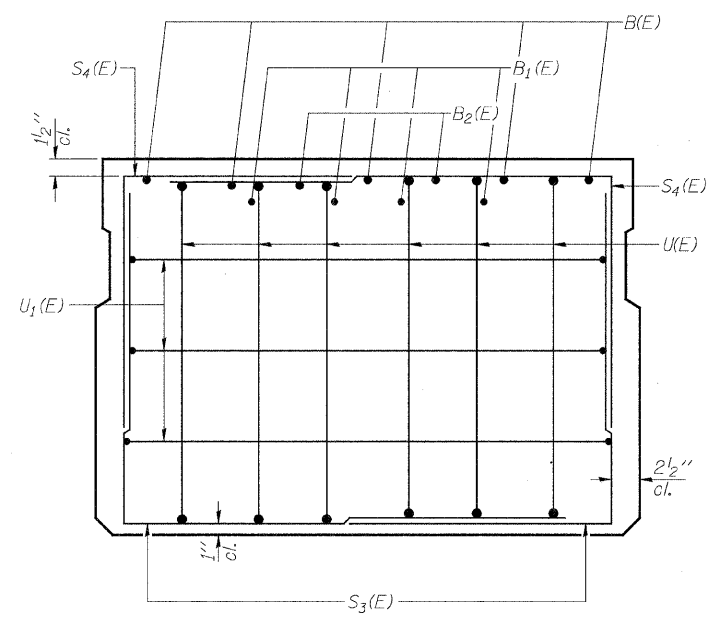
FILE NAME = S:\PROJECTS\2010\1285010-BureauCo.-TR240\DESIGN\STRUCTURE Drawings\1285010Beam.dgn



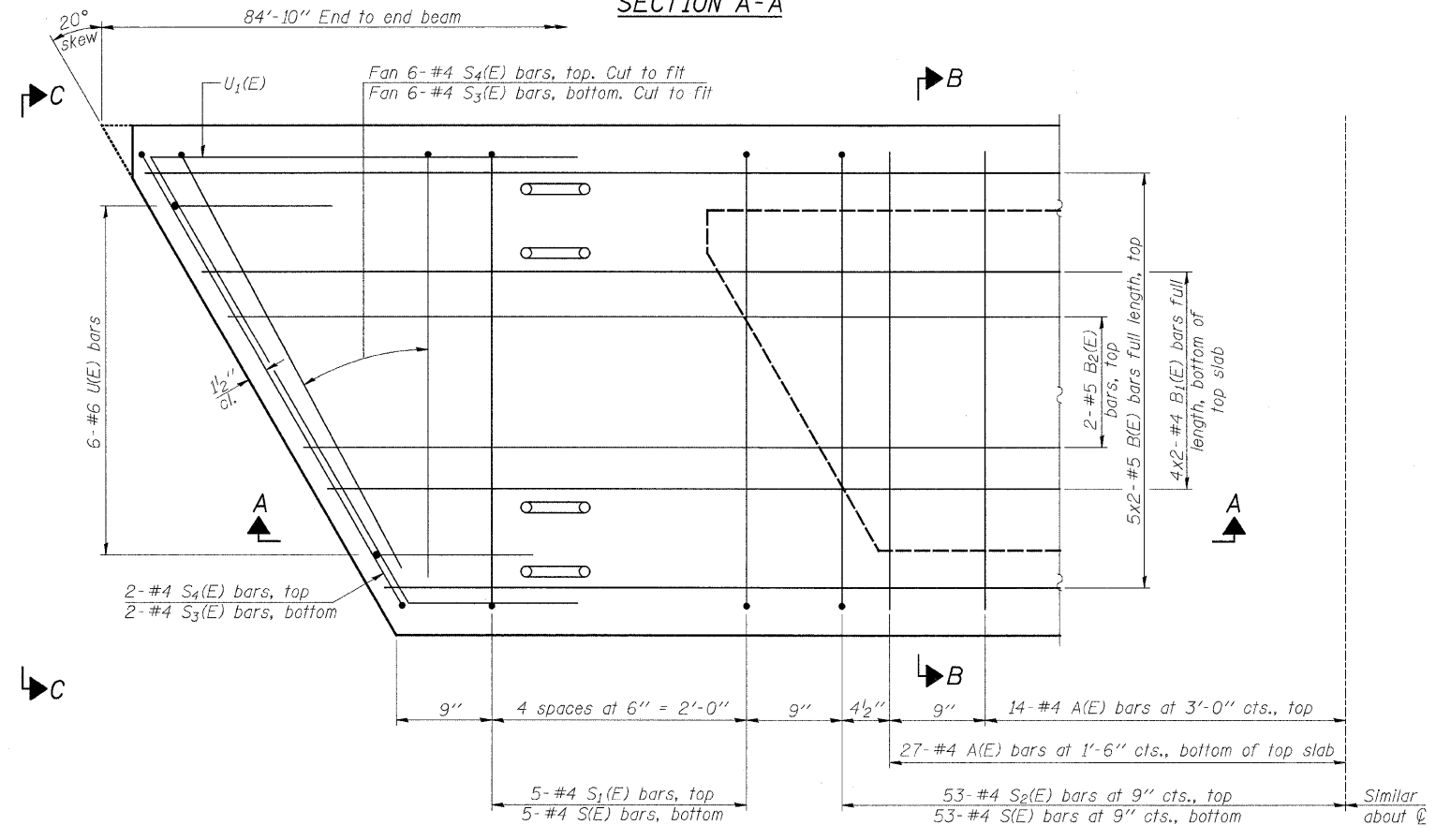
SECTION A-A



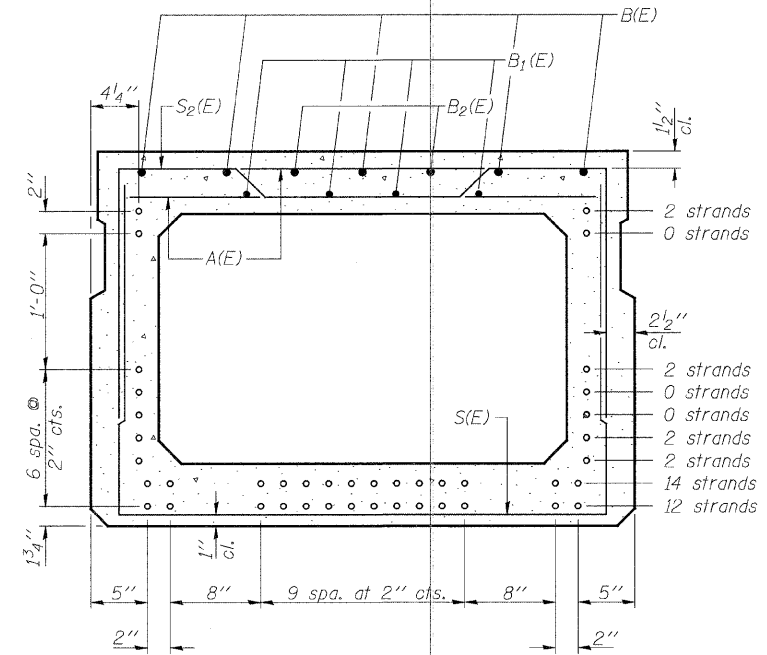
SECTION B-B
(Showing dimensions)



VIEW C-C



PLAN VIEW



SECTION B-B
(Showing reinforcement and permissible strand locations)

Note: Place the number of strands specified in each row symmetrically about the centerline of beam in the permissible strand locations shown.

BAR LIST
ONE BEAM ONLY
(For information only)

Bar	No.	Size	Length	Shape
A(E)	82	#4	3'-7"	—
B(E)	10	#5	43'-7"	—
B1(E)	8	#4	43'-4"	—
B2(E)	4	#5	10'-0"	—
S(E)	116	#4	8'-5"	┌
S1(E)	10	#4	7'-3"	┌
S2(E)	116	#4	7'-6"	┌
S3(E)	16	#4	4'-10"	┌
S4(E)	16	#4	4'-3"	┌
U(E)	12	#6	5'-0"	┌
U1(E)	6	#4	7'-6"	┌

NOTES:

See Structural Sheet 4 of 9 for additional details and Bill of Material.
Spacing of S(E) and S2(E) bars may be adjusted up to 4" in the immediate area of the transverse tie diaphragms to miss the block outs for the transverse ties.
Bars indicated thus 5x2-#5 etc. indicates 5 lines of bars with 2 lengths per line.

MINIMUM BAR LAP
#4 bar = 2'-0"
#5 bar = 2'-6"

USER NAME =	DESIGNED - B.S.K.	REVISED -
PLOT SCALE =	CHECKED - B.K.C.	REVISED -
PLOT DATE =	DRAWN - F.D.L.	REVISED -
	CHECKED - M.A.C.	REVISED -

BUREAU COUNTY
T.R. 240 OVER PLOW HOLLOW CREEK
STATION 15 + 00

33' x 48" PPC DECK BEAM
STRUCTURE NO. 006-4012
STRUCTURAL SHEET NO. 3 OF 9 SHEETS

TWP. RTE.	SECTION	COUNTY	TOTAL SHEETS	SHEET NO.
240	10-01121-00-BR	BUREAU	23	12
WHA* 1285010		CONTRACT NO. 87483		
ILLINOIS		FED. AID PROJECT BROS 0011(075)		