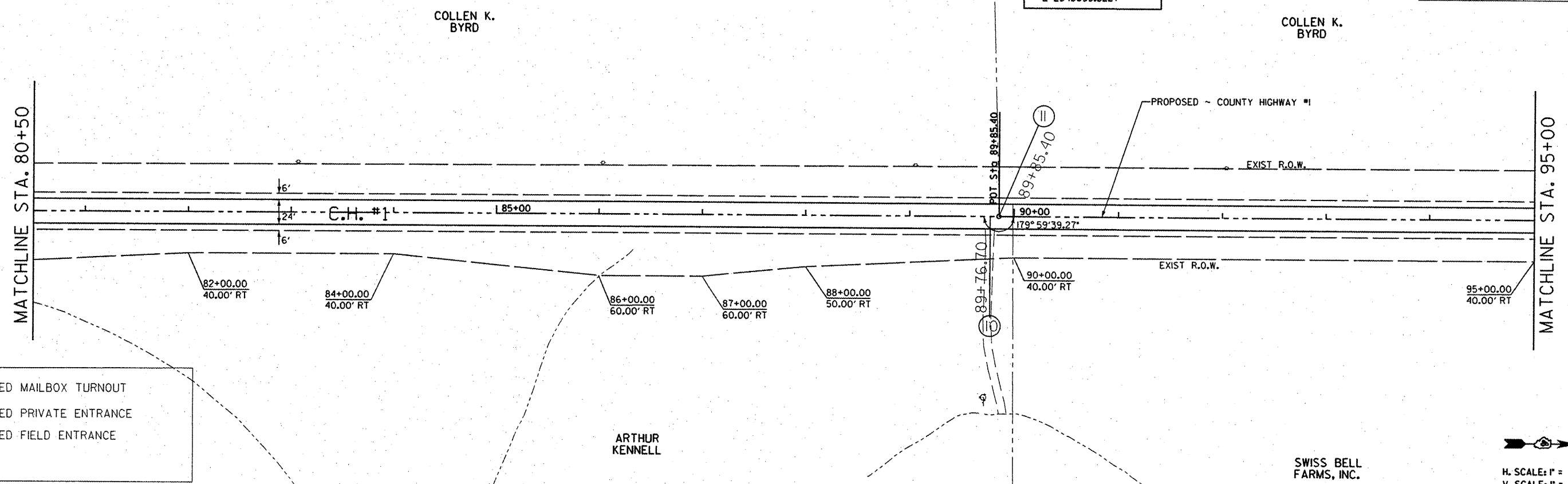


F.A. RTE.	SECTION	COUNTY	TOTAL SHEETS	SHEET NO.
358	86-00075-04-PV	WOODFORD	33	15
STA.		TO STA.		
FED. ROAD DIST. NO.		ILLINOIS	FED. AID PROJECT	

~ County Highway #1
 POT STA 89+85.40
 N 151844.3835
 E 2543699.5227



- PROPOSED MAILBOX TURNOUT
- PROPOSED PRIVATE ENTRANCE
- PROPOSED FIELD ENTRANCE



H. SCALE: 1" = 50'
 V. SCALE: 1" = 5'

DATE	BY

DATE	BY

PLOT DATE • DATES
 FILE NAME • FILE#
 PLOT SCALE • SCALE
 USER NAME • USER

