

CONTRACT NO. 89596

F.A. RTE.	SECTION	COUNTY	TOTAL SHEETS	SHEET NO.
358	R6-00075-04-PV	WOODFORD	33	22
STA. 185+00.00		TO STA. 200+00.00		
FED. ROAD DIST. NO.	ILLINOIS	FED. AID PROJECT		

~ County Highway #1
 POT STA 197+24.54
 N 1522581.764
 E 25433506.308

- PROPOSED MAILBOX TURNOUT
- PROPOSED PRIVATE ENTRANCE
- PROPOSED FIELD ENTRANCE

JAY H. SCHERTZ, ET AL

JAY H. SCHERTZ ET AL

JOHN P. KENNEL, ET UX

JOHN P. KENNEL, ET UX

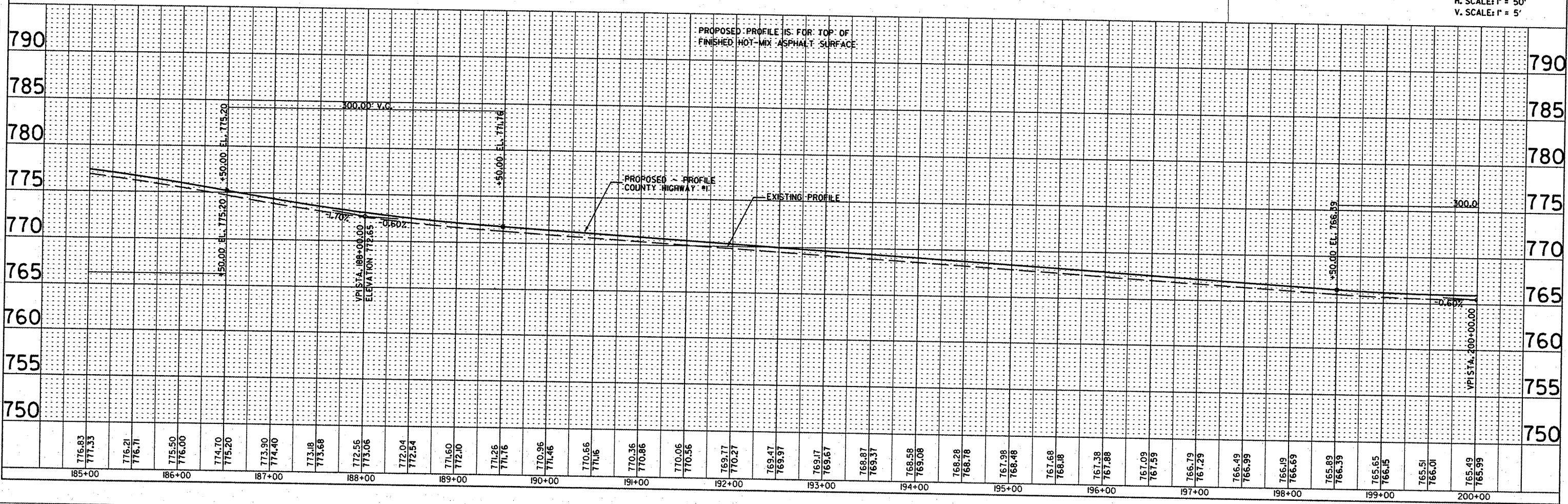
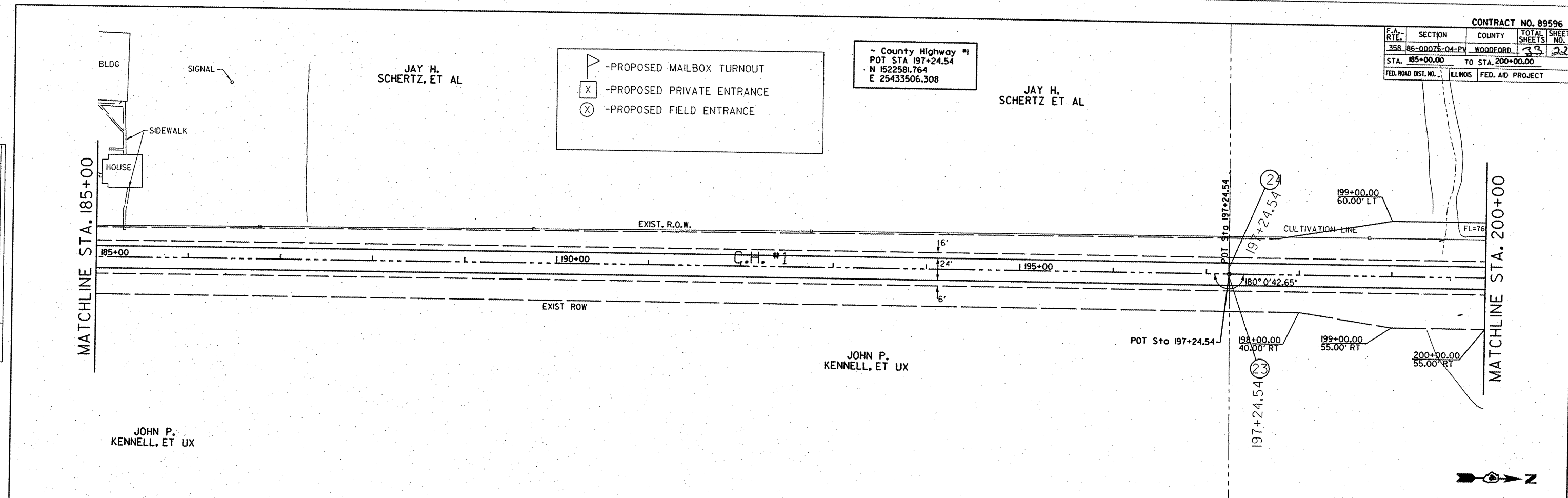
MATCHLINE STA. 185+00

MATCHLINE STA. 200+00

PLAN	DATE
REVISION	
NOTED	
CHECKED	
DATE	

PROFILE	DATE
REVISION	
NOTED	
CHECKED	
DATE	

PLOT DATE * DATE
 PLOT SCALE * SCALE
 USER NAME * USER



H. SCALE: 1" = 50'
 V. SCALE: 1" = 5'