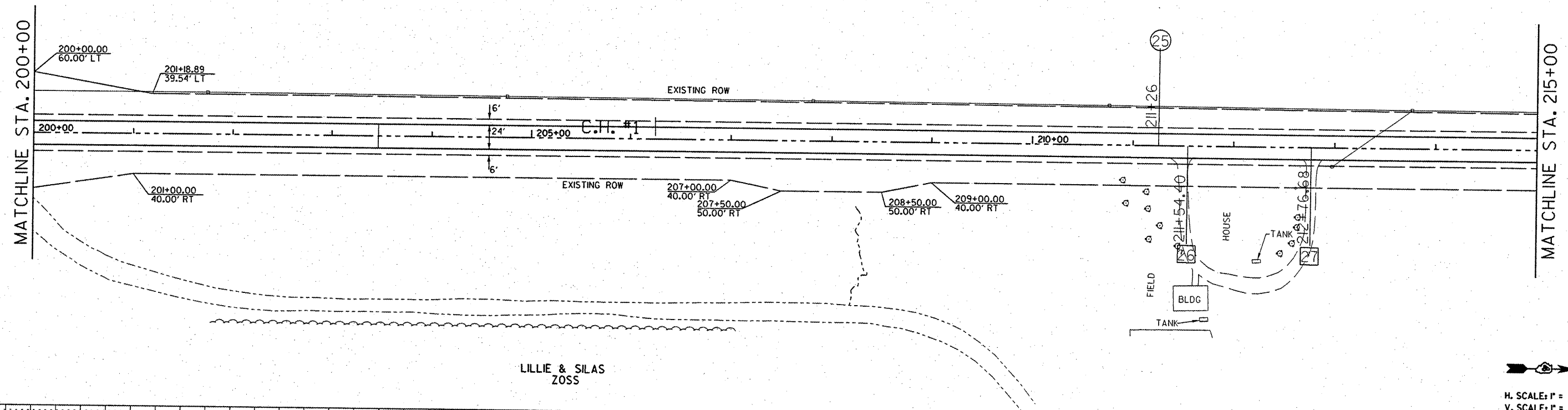


F.A. RTE.	SECTION	COUNTY	TOTAL SHEETS	SHEET NO.
358	86-00075-04-PV	WOODFORD	33	23
STA. 200+00.00		TO STA. 215+00.00		
FED. ROAD DIST. NO.	ILLINOIS	FED. AID PROJECT		

- PROPOSED MAILBOX TURNOUT
- PROPOSED PRIVATE ENTRANCE
- PROPOSED FIELD ENTRANCE

MILDRED NICHOLS WOODS

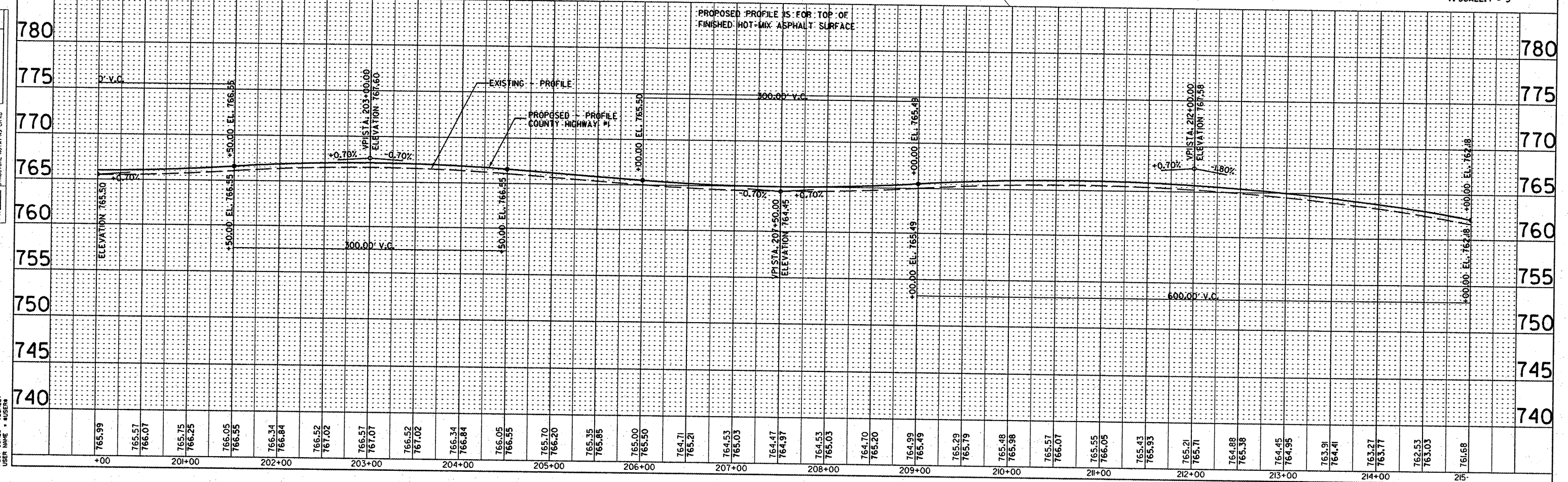


LILLIE & SILAS ZOSS

H. SCALE: 1" = 50'
V. SCALE: 1" = 5'

PLAN	DATE
BY	
REVISION	
NO.	
DATE	
BY	
REVISION	
NO.	
DATE	

PROFILE	DATE
BY	
REVISION	
NO.	
DATE	
BY	
REVISION	
NO.	
DATE	



PLOT DATE	DATE
BY	
REVISION	
NO.	
DATE	
BY	
REVISION	
NO.	
DATE	