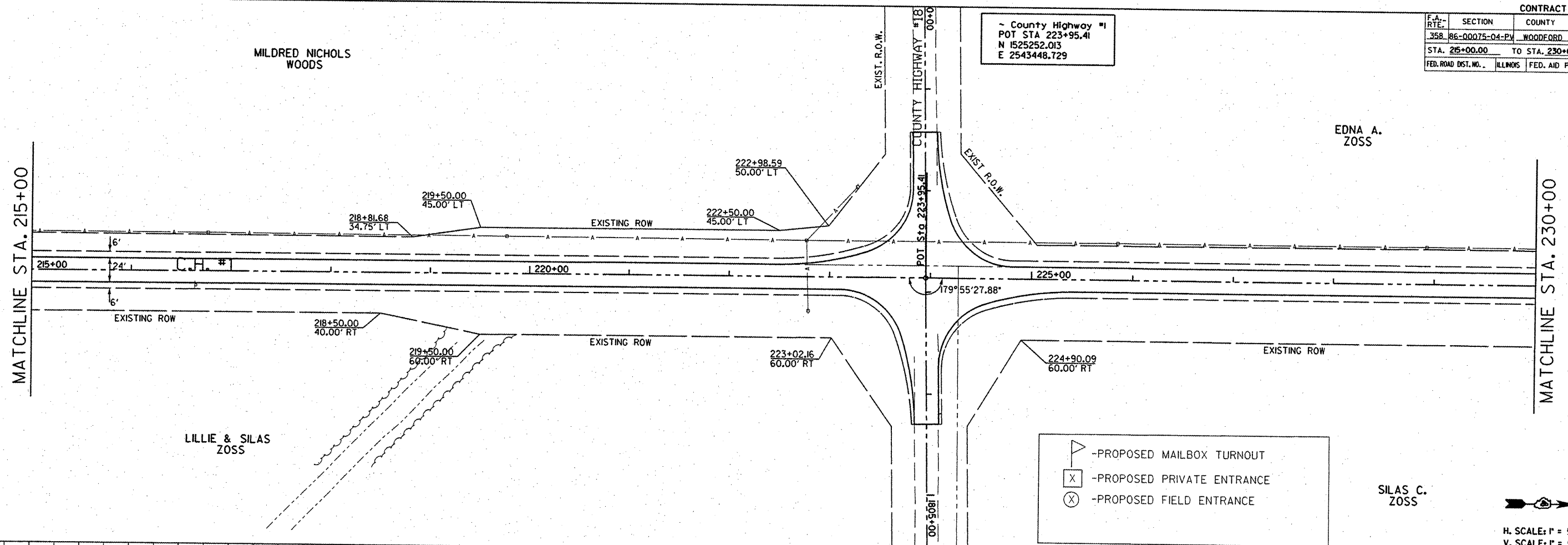


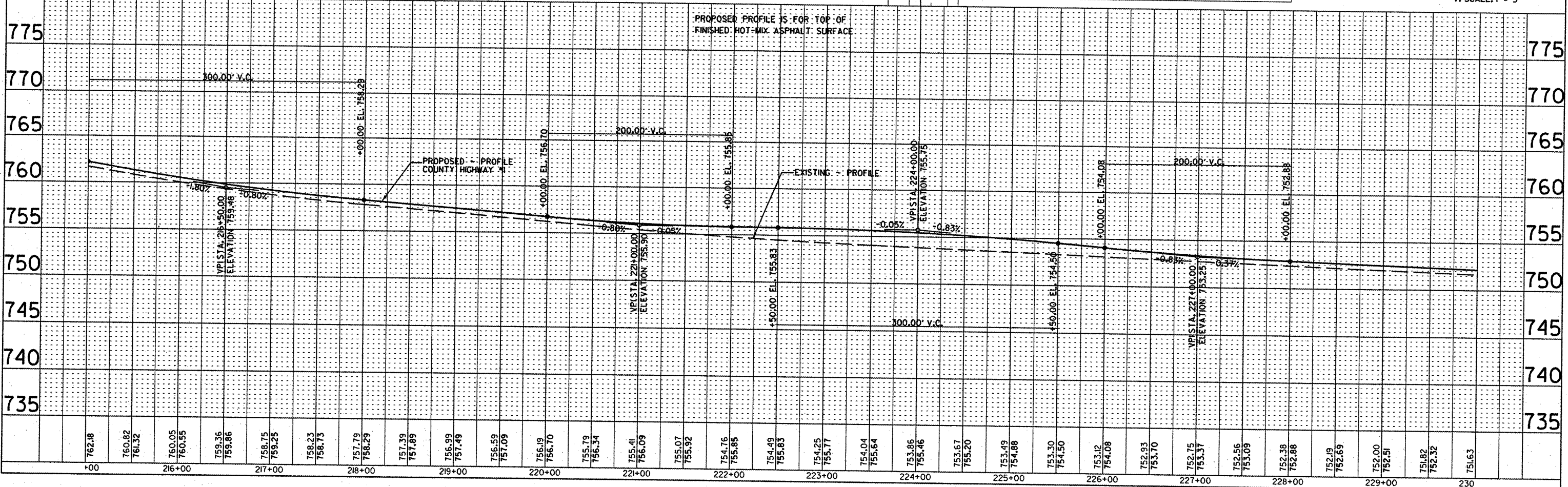
F.A. RTE.	SECTION	COUNTY	TOTAL SHEETS	SHEET NO.
35B	86-00075-04-PV	WOODFORD	33	24
STA. 215+00.00		TO STA. 230+00.00		
FED. ROAD DIST. NO.		ILLINOIS FED. AID PROJECT		

~ County Highway #1
 POT STA 223+95.41
 N 1525252.013
 E 2543448.729

PLAN	DATE	BY
SURVEYED		
PLOTTED		
NOTE BOOK NO.		
NO. OF SHEETS		
NO. OF SHEETS CHECKED		
FILE NAME		



PROFILE	DATE	BY
SURVEYED		
GRADES ORDERED		
STATIONING		
NOTE BOOK NO.		
NO.		



DATE	BY