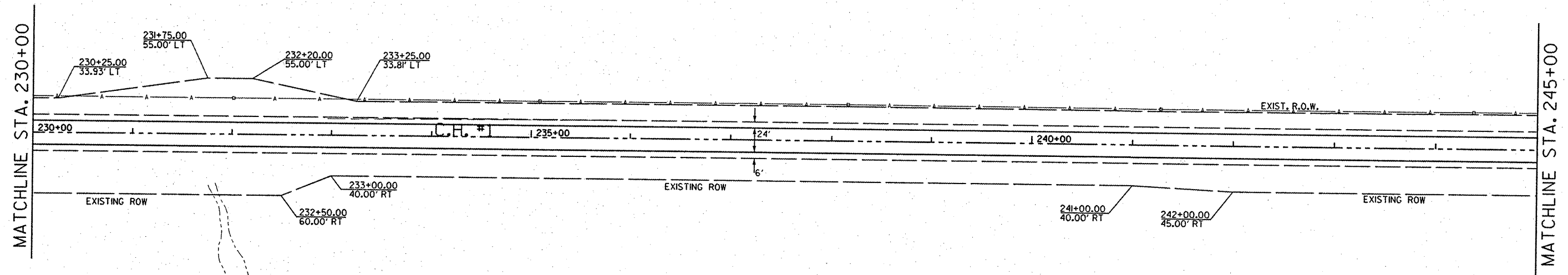


CONTRACT NO. 89596

| F.A. RTE. | SECTION | COUNTY | TOTAL SHEETS | SHEET NO. |
|---------------------|----------------|-------------------|--------------|-----------|
| 388 | R6-00075-04-PW | WOODFORD | 23 | 25 |
| STA. 230+00.00 | | TO STA. 245+00.00 | | |
| FED. ROAD DIST. NO. | ILLINOIS | FED. AID PROJECT | | |

EDNA A. ZOSS



SILAS C. ZOSS

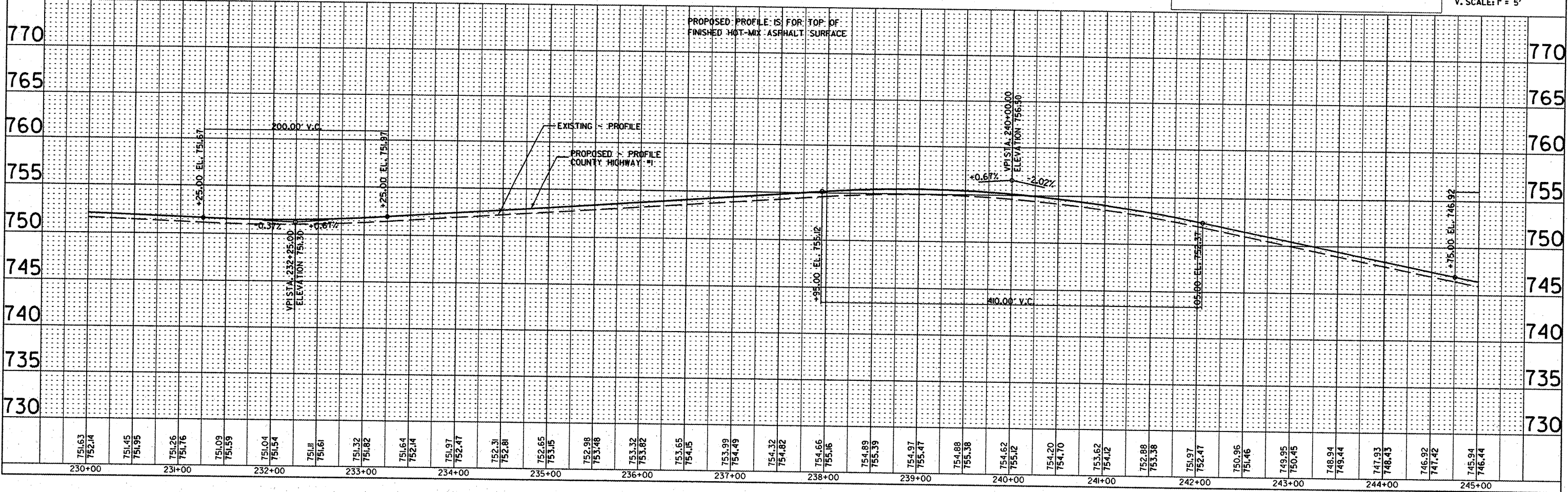
- PROPOSED MAILBOX TURNOUT
- PROPOSED PRIVATE ENTRANCE
- PROPOSED FIELD ENTRANCE

N
H. SCALE: P = 50'
V. SCALE: P = 5'

| | | |
|------|-----------|------|
| PLAN | REVISIONS | DATE |
| NO. | BY | |
| NO. | BY | |
| NO. | BY | |
| NO. | BY | |

| | | |
|---------|-----------|------|
| PROFILE | REVISIONS | DATE |
| NO. | BY | |
| NO. | BY | |
| NO. | BY | |
| NO. | BY | |

PLOT DATE: * DATE *
PLOT SCALE: * SCALE *
USER NAME: * USER *



PROPOSED PROFILE IS FOR TOP OF FINISHED HOT-MIX ASPHALT SURFACE