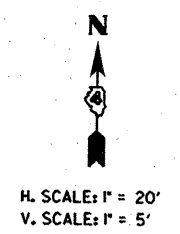
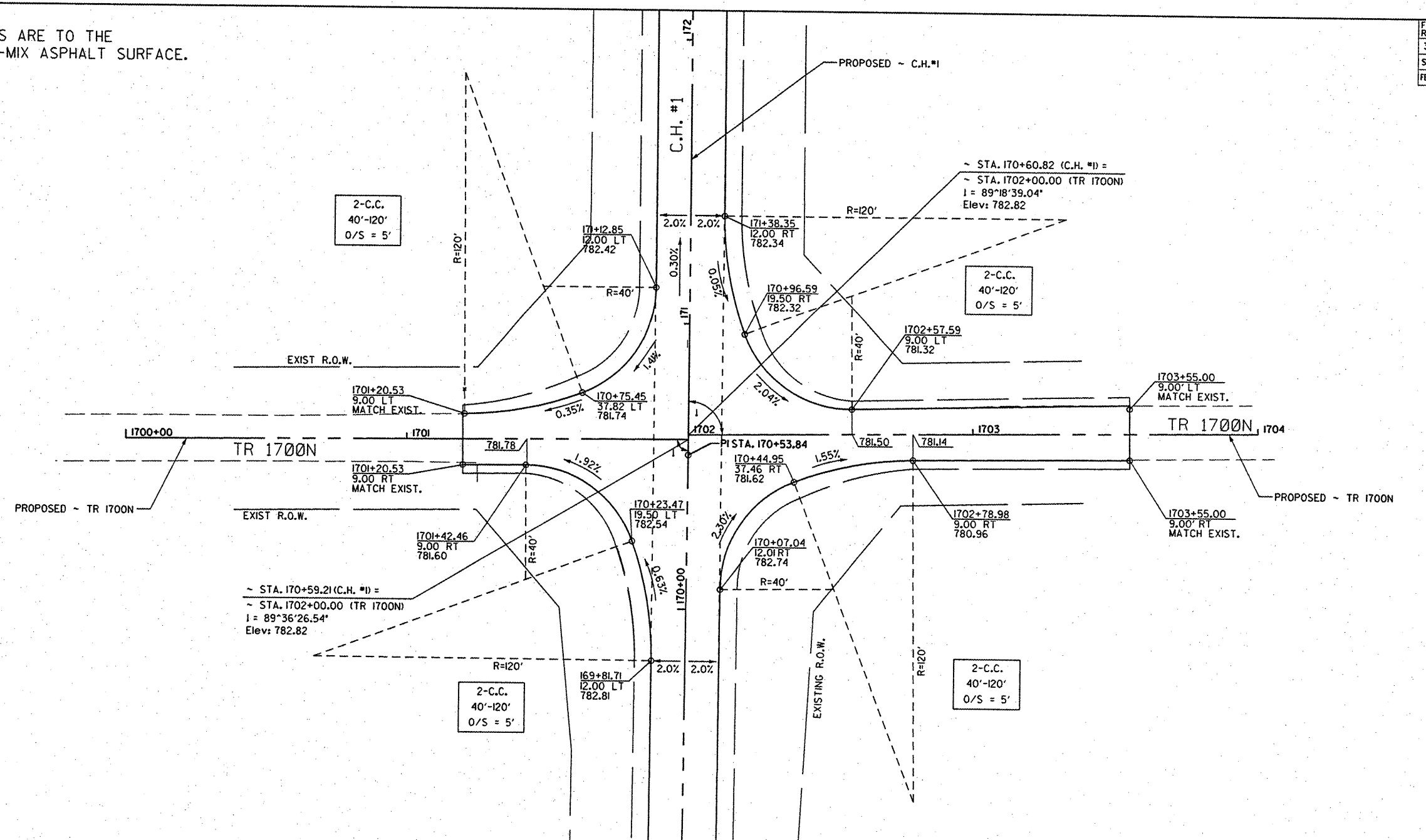


NOTE: PROFILE & ELEVATIONS ARE TO THE TOP OF FINISHED HOT-MIX ASPHALT SURFACE.

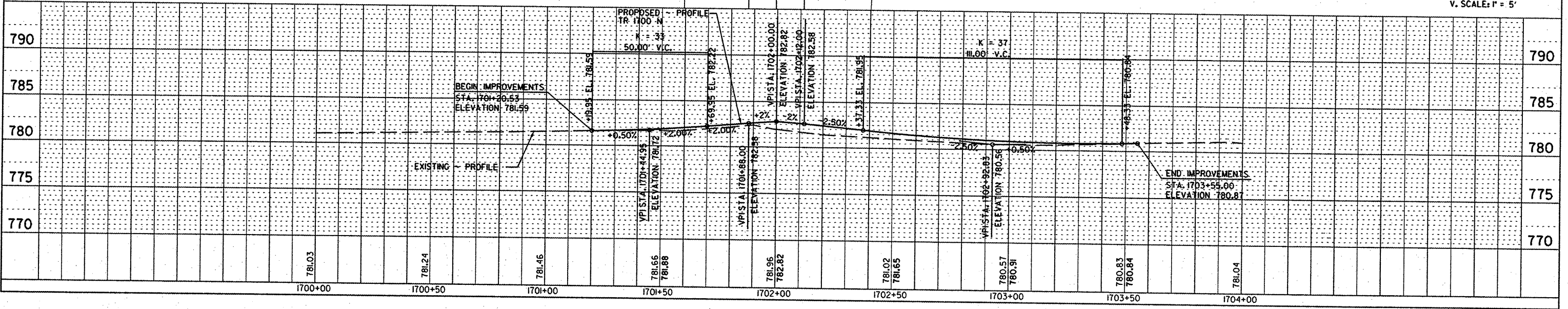
CONTRACT NO. 89596			
F.A. RTE.	SECTION	COUNTY	TOTAL SHEETS
358	B6-00076-04-PV	WOODFORD	33
31			
STA.	TO STA.		
FED. ROAD DIST. NO.	ILLINOIS	FED. AID PROJECT	



DATE	BY
DATE	BY
DATE	BY

DATE	BY
DATE	BY
DATE	BY

DATE	BY
DATE	BY
DATE	BY



TR 1700N INTERSECTION DETAIL