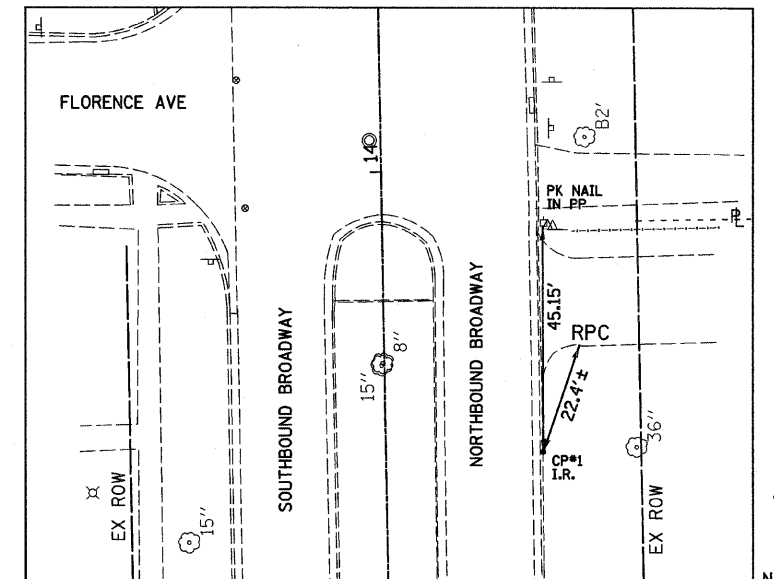


GENERAL NOTES

1. ANY REFERENCE TO A STANDARD IN THESE PLANS SHALL BE TAKEN TO MEAN THE LATEST EDITION OF THE CITED STANDARD.
2. ALL SAW CUTTING OF EXISTING PAVEMENT SHALL BE INCLUDED IN THE RESPECTIVE REMOVAL PAY ITEMS. A SAW CUT ALONG THE EDGES OF HOT-MIX ASPHALT SURFACE REMOVAL, VARIABLE DEPTH SHALL BE SAW CUT WITH SMOOTH STRAIGHT LINES AND SHALL BE INCLUDED IN THE HOT-MIX ASPHALT SURFACE REMOVAL, VARIABLE DEPTH UNIT COST.
3. THE EXISTING ROAD SIGNS THAT INTERFERE WITH THE CONSTRUCTION SHALL BE REMOVED BY THE TOWN OF NORMAL. THE CONTRACTOR SHALL GIVE THE TOWN 48 HOURS NOTICE (EXCLUSIVE OF WEEKENDS OR HOLIDAYS) BEFORE COMMENCING ACTIVITIES REQUIRING SIGN REMOVAL AND/OR RELOCATION. UNDER NO CIRCUMSTANCES SHALL THE CONTRACTOR REMOVE CITY SIGNS.
4. IT SHALL BE THE CONTRACTOR'S RESPONSIBILITY TO DETERMINE THE ACTUAL LOCATION OF ALL UNDERGROUND UTILITY FACILITIES BEFORE STARTING CONSTRUCTION. THE CONTRACTOR SHALL ALSO OBTAIN FROM THE RESPECTIVE UTILITY COMPANIES DETAILED INFORMATION RELATIVE TO THE LOCATION OF THEIR FACILITIES AND THE WORKING SCHEDULES OF THE UTILITY COMPANIES FOR THEIR MARKING OF THE EXACT LOCATIONS. THE CONTRACTOR SHALL COORDINATE CONSTRUCTION ACTIVITIES WITH UTILITY COMPANIES. ANY CHANGE IN STORM SEWER ELEVATIONS/GRADES WILL NOT BE PAID FOR BUT SHALL BE INCLUDED IN THE VARIOUS BID ITEMS.
5. THE TOWN OF NORMAL SHALL PROVIDE ALL PERMANENT STREET SIGNAGE NOT SHOWN.
6. THE CONTRACTOR SHALL BE RESPONSIBLE FOR PROTECTING UTILITY PROPERTY (ESPECIALLY THE 24" WATER MAINS) FROM CONSTRUCTION OPERATIONS AS OUTLINED IN ARTICLE 107.26 OF THE STANDARD SPECIFICATIONS. THE J.U.L.I.E. TELEPHONE NUMBER IS 1-800-892-0123. A MINIMUM OF 48 HOURS ADVANCE NOTICE IS REQUIRED. MEMBERS OF J.U.L.I.E. KNOWN TO BE WITHIN THE PROJECT AREA ARE:

TOWN OF NORMAL	AMEREN I.P.	CITY OF BLOOMINGTON
COMCAST CABLE COMPANY	NICOR	
FRONTIER	B.N.W.R.D.	

7. THE CONTRACTOR IS RESPONSIBLE FOR MAINTAINING DRAINAGE THROUGHOUT THE PROJECT. EXISTING INLETS/MANHOLES TO BE REMOVED SHALL REMAIN IN PLACE AND ACTIVE UNTIL THE PROPOSED INLETS/MANHOLES ARE CONSTRUCTED AND ACTIVATED TO PROVIDE SUITABLE DRAINAGE.
8. TREES OR BUSHES SHALL BE SAVED WHERE POSSIBLE. THE CONTRACTOR SHALL MEET WITH THE TOWN AND RESIDENT ENGINEER PRIOR TO ANY TREE OR BUSH TRIMMING OR REMOVAL OPERATIONS.

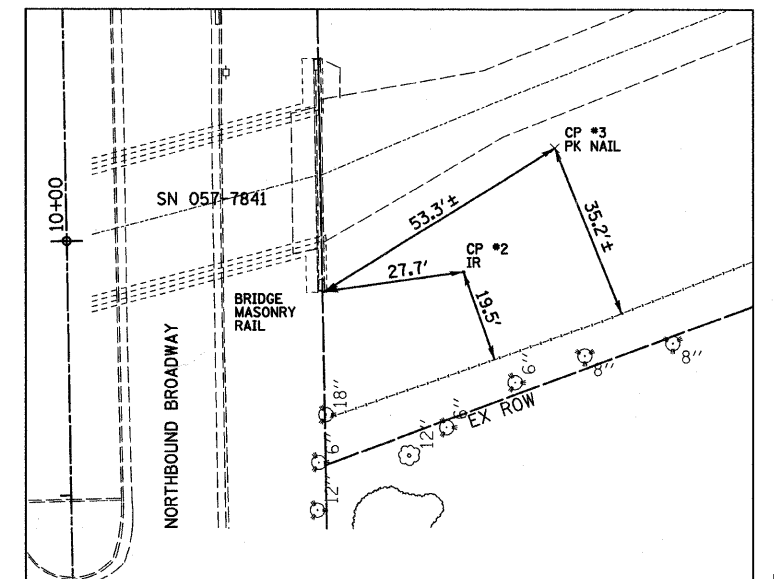


CONTROL TIE #1
I.R. W/CAP #5
STA 13+44.4, 30.8' RT
N 1,398,077.35
E 802,883.71

UTILITY AGENCIES THAT RECEIVED PLANS		
	PRE-FINAL PLANS SENT	FINAL PLANS SENT
TOWN OF NORMAL ENGINEERING	FEBRUARY 3, 2011	FEBRUARY 25, 2011
TOWN OF NORMAL WATER DEPARTMENT	FEBRUARY 3, 2011	FEBRUARY 25, 2011
AMEREN ILLINOIS POWER	FEBRUARY 3, 2011	FEBRUARY 25, 2011
NICOR GAS	FEBRUARY 3, 2011	FEBRUARY 25, 2011
COMCAST	FEBRUARY 3, 2011	FEBRUARY 25, 2011
CORNBELT ENERGY COMPANY	FEBRUARY 3, 2011	FEBRUARY 25, 2011
FRONTIER	FEBRUARY 3, 2011	FEBRUARY 25, 2011
BNWRD	FEBRUARY 3, 2011	FEBRUARY 25, 2011
CITY OF BLOOMINGTON WATER DEPARTMENT	FEBRUARY 3, 2011	FEBRUARY 25, 2011

BENCHMARKS:

1. STA 3+91.91, 33.9' LT
TOP OF FIRE HYDRANT
NORTH CORNER OF ARCHIE AVE
WEST SIDE OF BROADWAY AVE
ELEV=779.29 (BK 2675/61)
2. STA 8+01.7, 33.0' LT
TOP OF FIRE HYDRANT
WEST SIDE BROADWAY AVE
100'± SOUTH OF BRIDGE
IN FRONT OF HOUSE #903
ELEV=770.29 (BK 2675/61)
3. STA 14+40.29, 37.3' LT
TOP OF FIRE HYDRANT
NORTH CORNER OF BROADWAY
TERRACE, WEST SIDE OF
BROADWAY AVE
ELEV=774.52 (BK 2675/61)



CONTROL TIE #2
I.R. W/CAP
STA 9+92.6, 77.6' RT
N 1,397,726.43
E 802,936.71

CONTROL TIE #3
NAIL
STA 10+16.7, 96.0' RT
N 1,397,750.80
E 802,954.60

BASELINE COORDINATES		
STATION	NORTHING	EASTING
8+00.00	1,397,532.45	802,862.48
10+00.00	1,397,732.42	802,858.96
12+00.00	1,397,932.39	802,855.44

#FILED #
DATE #
BY Town of Normal/2008/0080881 Broadway Ave Brd/dgn

DESIGNED - BAB/JCZ	REVISED -
DRAWN - JTC/JWK	REVISED -
CHECKED - MSW	REVISED -
DATE - 02/25/11	REVISED -

TOWN OF NORMAL

GENERAL NOTES, CONTROL TIES AND BENCHMARKS

**BROADWAY AVENUE OVER SUGAR CREEK
SECTION 07-00233-00-BR
MCLEAN, COUNTY**

F.A.U.	SECTION	COUNTY	TOTAL SHEETS	SHEET NO.
	07-00233-00-BR	MCLEAN	40	2
S.N. 057-7841			CONTRACT NO. 91422	
FED. ROAD DIST. NO. 5 ILLINOIS FED. AID PROJECT				

SCALE: N.T.S. SHEET NO. 2 OF 40 SHEETS STA. 8+30 TO STA. 11+75

FARNSWORTH GROUP, INC.

CONSULTING ENGINEERS - 2709 MCGRAW DRIVE BLOOMINGTON, ILLINOIS 61704 (309) 663-8435 / (309) 663-1571 FAX

24-8175