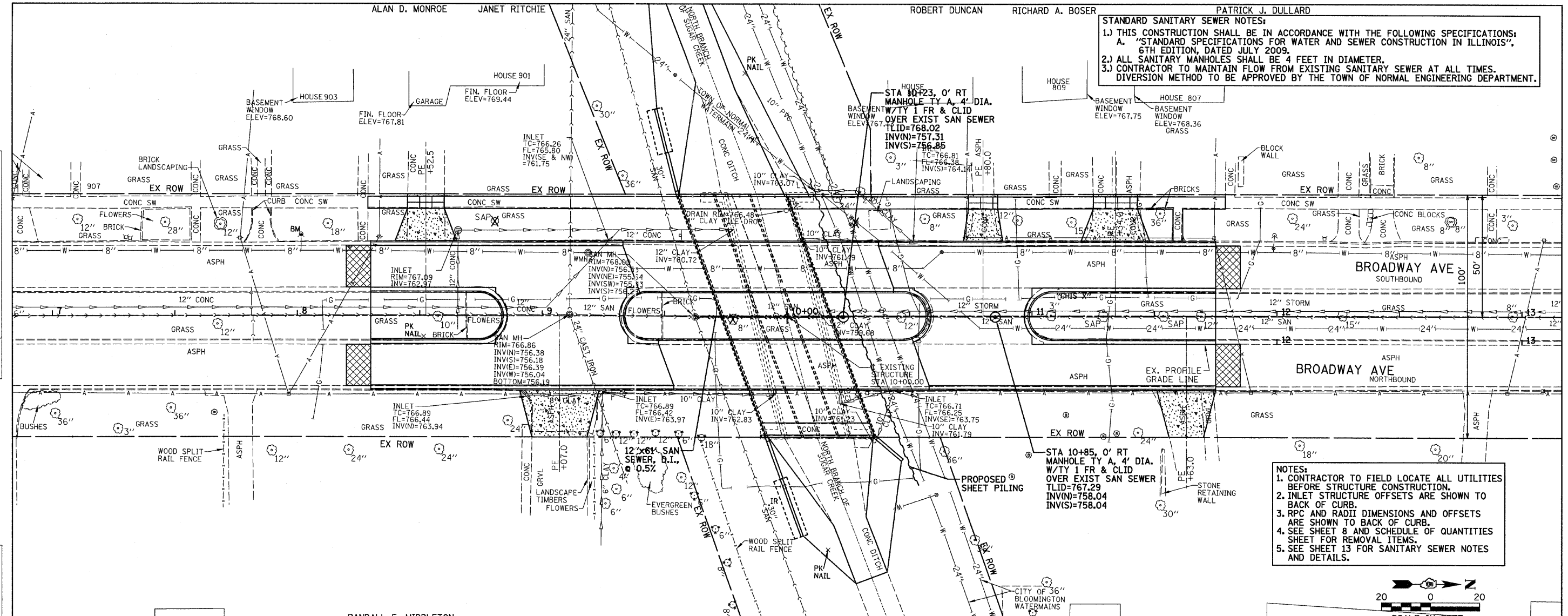
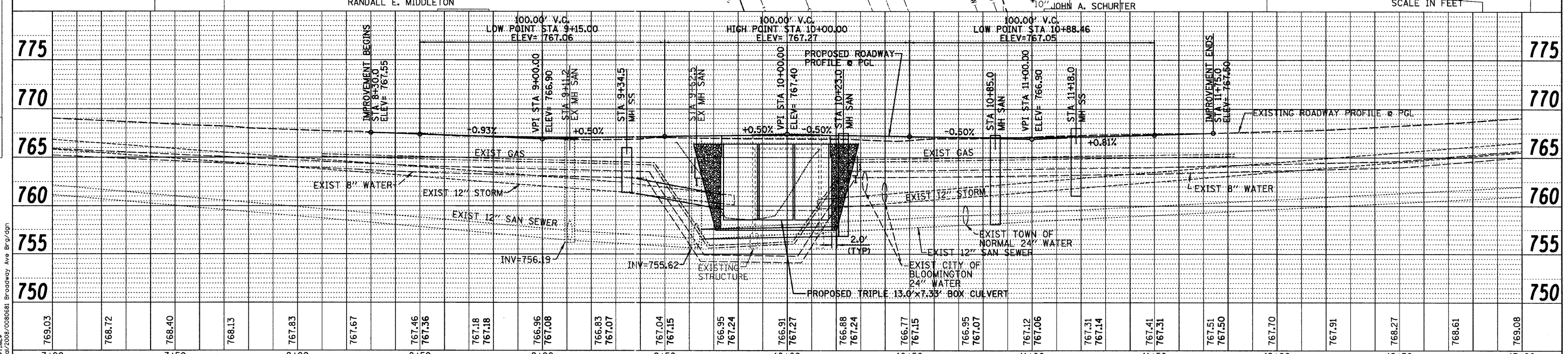
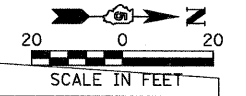


ALAN D. MONROE JANET RITCHIE ROBERT DUNCAN RICHARD A. BOSER PATRICK J. DULLARD

STANDARD SANITARY SEWER NOTES:
 1.) THIS CONSTRUCTION SHALL BE IN ACCORDANCE WITH THE FOLLOWING SPECIFICATIONS:
 A. "STANDARD SPECIFICATIONS FOR WATER AND SEWER CONSTRUCTION IN ILLINOIS",
 6TH EDITION, DATED JULY 2009.
 2.) ALL SANITARY MANHOLES SHALL BE 4 FEET IN DIAMETER.
 3.) CONTRACTOR TO MAINTAIN FLOW FROM EXISTING SANITARY SEWER AT ALL TIMES.
 DIVERSION METHOD TO BE APPROVED BY THE TOWN OF NORMAL ENGINEERING DEPARTMENT.



NOTES:
 1. CONTRACTOR TO FIELD LOCATE ALL UTILITIES BEFORE STRUCTURE CONSTRUCTION.
 2. INLET STRUCTURE OFFSETS ARE SHOWN TO BACK OF CURB.
 3. RPC AND RADII DIMENSIONS AND OFFSETS ARE SHOWN TO BACK OF CURB.
 4. SEE SHEET 8 AND SCHEDULE OF QUANTITIES SHEET FOR REMOVAL ITEMS.
 5. SEE SHEET 13 FOR SANITARY SEWER NOTES AND DETAILS.



DATE	
BY	
DATE	
BY	
DATE	
BY	
DATE	
BY	
DATE	
BY	

DATE	
BY	
DATE	
BY	
DATE	
BY	
DATE	
BY	
DATE	
BY	

FILE# 07-00233-00-BR
 DATE 02/25/11
 PROJECT: TOWN OF NORMAL, BROADWAY AVE BRG/CGN

DESIGNED - BAB/JCZ	REVISED -	TOWN OF NORMAL	SANITARY SEWER PLAN AND PROFILE	BROADWAY AVENUE OVER SUGAR CREEK SECTION 07-00233-00-BR MCLEAN COUNTY	F.A.U.	SECTION	COUNTY	TOTAL SHEETS	SHEET NO.
DRAWN - JTC/JWK	REVISED -				07-00233-00-BR	MCLEAN	40	10	
CHECKED - MSW	REVISED -				S.N. 057-7841		CONTRACT NO. 91422		
DATE - 02/25/11	REVISED -				FED. ROAD DIST. NO. 5 [ILLINOIS] FED. AID PROJECT				