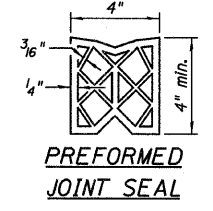
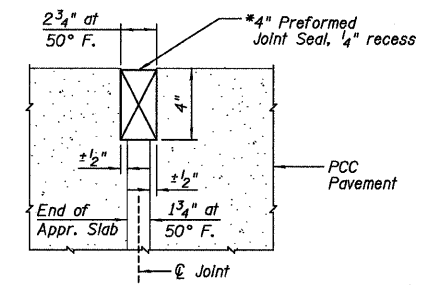
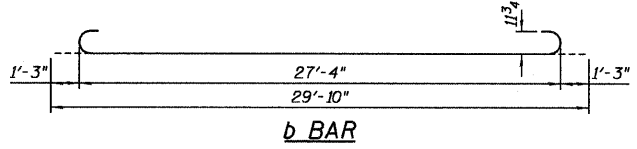
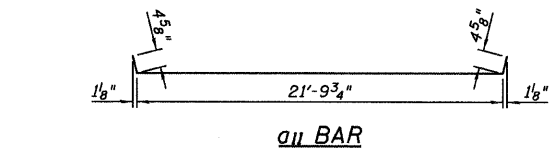


**NORTHWEST APPROACH SLAB
BILL OF MATERIAL**

Bar	No.	Size	Length	Shape
a10	46	#5	22'-2"	—
a11	25	#4	22'-7"	—
b	51	#9	29'-10"	⌒
b1	20	#4	29'-8"	—
t2	44	#5	10'-3"	—
w3	40	#5	22'-2"	—
Item	Unit	Quantity		
Concrete Structures	Cu. Yd.	6.9		
Concrete Superstructure	Cu. Yd.	32.8		
Reinforcement Bars, Epoxy Coated	Pound	8,410		

**SOUTHEAST APPROACH SLAB
BILL OF MATERIAL**

Bar	No.	Size	Length	Shape
a10	46	#5	22'-2"	—
a11	25	#4	22'-7"	—
b	51	#9	29'-10"	⌒
b1	20	#4	29'-8"	—
t2	44	#5	10'-3"	—
w3	40	#5	22'-2"	—
Item	Unit	Quantity		
Concrete Structures	Cu. Yd.	6.9		
Concrete Superstructure	Cu. Yd.	32.8		
Reinforcement Bars, Epoxy Coated	Pound	8,410		

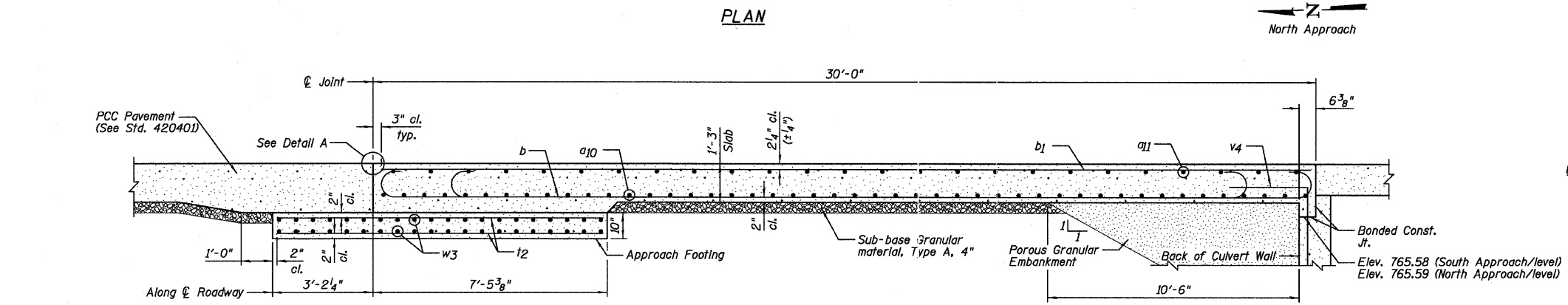


DETAIL A-RIGID PAVEMENT

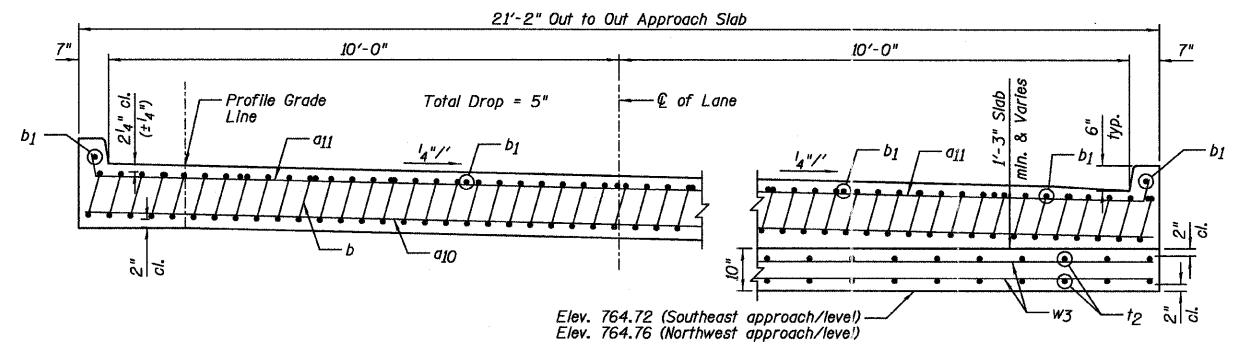
NOTES:

- a10 thru a11 bar spacings measured parallel to C Roadway.
- Tilt #9 b bars as required to maintain clearance.
- Approach Slab concrete shall be paid for as Concrete Superstructure.
- Approach Footing concrete shall be paid for as Concrete Structures.
- Reinforcement shall be paid for as Reinforcement Bars, Epoxy Coated.
- For v4 bar details, see Sheet C2.
- The Approach Footing maximum applied service bearing pressure (Qmax) = 2.0 ksf.
- Cost of excavation for Approach Footing included with Concrete Structures.
- Cost of Sub-base Granular Material, Type A beneath the Approach Slab included with Concrete Superstructure.

**SOUTHEAST AND NORTHWEST
APPROACH SLAB
STRUCTURE NO. 057-7841**



SECTION A-A



NEAR CULVERT

SECTION B-B

AT APPROACH FOOTING

DESIGNED	JCZ
CHECKED	MSW
DRAWN	JWK
CHECKED	MSW
DATE	02/25/11

SHEET NO. C7	F.A.P. RTE.	SECTION	COUNTY	TOTAL SHEETS	SHEET NO.
		07-00233-00-BR	MCLEAN	40	22
19 SHEETS	SN 057-7841		CONTRACT NO. 91422		
FED. ROAD DIST. NO. 5 ILLINOIS FED. AID PROJECT					