

| ROUTE NO.           | SECTION        | COUNTY   | TOTAL SHEETS       | SHEET NO. |
|---------------------|----------------|----------|--------------------|-----------|
| T.R. 221A           | 10-07133-00-BR | McLEAN   | 19                 | 1         |
| FED. ROAD DIST. NO. |                | ILLINOIS | CONTRACT NO. 91455 |           |

STATE OF ILLINOIS  
DEPARTMENT OF TRANSPORTATION  
DIVISION OF HIGHWAYS

# PLANS FOR PROPOSED HIGHWAY BRIDGE PROGRAM

**PROJECT BROS-0113(034)  
SECTION 10-07133-00-BR  
BLUE MOUND ROAD DISTRICT  
McLEAN COUNTY  
T.R. 221A / 1700N ROAD  
PROPOSED STRUCTURE NO. 057-3519  
SCHULDT BRIDGE  
JOB NO. C-95-316-11**

**INDEX OF SHEETS**

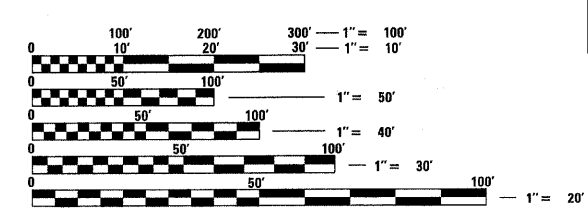
| SHEET NO. | DESCRIPTION                             |
|-----------|---|
| 1.        | COVER SHEET                             |
| 2.        | SUMMARY OF QUANTITIES AND GENERAL NOTES |
| 3.        | TYPICAL CROSS SECTIONS                  |
| 4.        | PLAN & PROFILE                          |
| 5.-10.    | STATION CROSS SECTIONS                  |
| 11.-17.   | BRIDGE PLANS                            |
| 18.-19.   | BORINGS                                 |

HIGHWAY STANDARDS:

|           |   |
|-----------|---|
| 000001-06 | STANDARD SYMBOLS, ABBREVIATIONS, AND PATTERNS   |
| 280001-05 | TEMPORARY EROSION CONTROL SYSTEMS   |
| 515001-03 | NAME PLATE FOR BRIDGES  |
| 701901-01 | TRAFFIC CONTROL DEVICES   |
| BLR 21-8  | TYPICAL APPLICATION OF TRAFFIC CONTROL DEVICES FOR CONSTRUCTION ON RURAL LOCAL HIGHWAYS |
| BLR 23-3  | TRAFFIC BARRIER TERMINAL, TYPE 1  |
| BLR 27-1  | TRAFFIC BARRIER TERMINAL, TYPE 5A   |

**UTILITIES**

- AMEREN IP (NORTH)  
501 E. LAFAYETTE  
BLOOMINGTON, IL 61701
- CORN BELT ENERGY  
ONE ENERGY PLACE  
P.O. BOX 815  
BLOOMINGTON, IL 61702
- FRONTIER COMMUNICATIONS  
104 MULBERRY  
NORMAL, IL 61761
- NICOR GAS  
1305 MARTIN LUTHER KING DRIVE  
BLOOMINGTON, IL 61701
- VILLAGE OF COOKSVILLE  
205 SOUTH WALNUT  
COOKSVILLE, IL 61730



FULL SIZE PLANS HAVE BEEN PREPARED USING STANDARD ENGINEERING SCALES. REDUCED SIZED PLANS WILL NOT CONFORM TO STANDARD SCALES. IN MAKING MEASUREMENTS ON REDUCED PLANS, THE ABOVE SCALES MAY BE USED.



LOCATION OF SECTION INDICATED THUS: - [black rectangle] -

FUNCTIONAL CLASSIFICATION: LOCAL ROAD (0-250 ADT)  
DESIGN SPEED: 30 MPH  
DESIGN TRAFFIC: 50 ADT (2005)

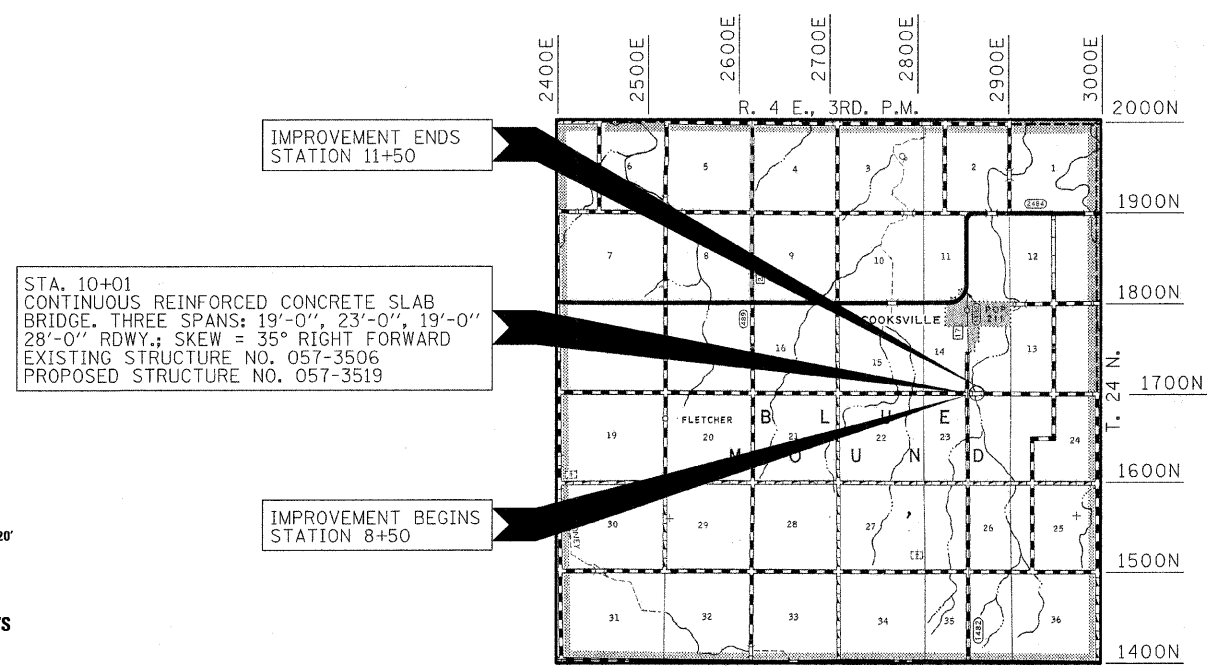
**ILLINOIS DEPARTMENT OF TRANSPORTATION**

APPROVED March 3 2011  
COUNTY ENGINEER

APPROVED 3-3-2011  
ROAD COMMISSIONER

PASSED March 10 2011  
DISTRICT FIVE ENGINEER OF LOCAL ROADS & STREETS

Releasing For Bid Based on Limited Review  
March 10 2011  
DEPUTY DIRECTOR OF HIGHWAYS  
REGION THREE ENGINEER  
STATE OF ILLINOIS  
DEPARTMENT OF TRANSPORTATION



STA. 10+01  
CONTINUOUS REINFORCED CONCRETE SLAB BRIDGE, THREE SPANS: 19'-0", 23'-0", 19'-0"  
28'-0" RDWY.; SKEW = 35° RIGHT FORWARD  
EXISTING STRUCTURE NO. 057-3506  
PROPOSED STRUCTURE NO. 057-3519

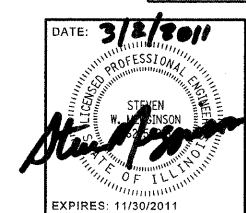
IMPROVEMENT ENDS STATION 11+50

IMPROVEMENT BEGINS STATION 8+50

**LOCATION MAP**

APPROXIMATE SCALE: 0 1 MILE  
NET LENGTH OF SECTION = 300 FEET = 0.057 MILES

**CONTRACT NO. 91455**



**HAMPTON, LENZINI AND RENWICK, INC.**  
CIVIL ENGINEERS - STRUCTURAL ENGINEERS - LAND SURVEYORS  
3085 STEVENSON DRIVE, SUITE 201  
SPRINGFIELD, ILLINOIS 62703  
217.546.3400 www.hlrengineering.com

EXPIRES: 11/30/2011  
PROJECT NUMBER: 10.0353.130  
DATE: 01/16/11