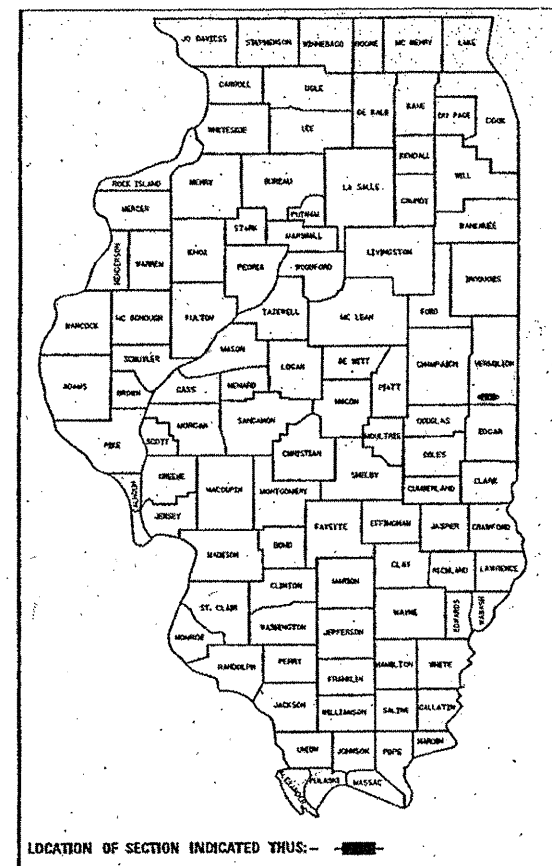


ROUTE	SECTION	COUNTY	TOTAL SHEETS	SHEET NUMBER
C.H. 49	08-00162-01-RS	VERMILION	39	1

STATE OF ILLINOIS
VERMILION COUNTY HIGHWAY DEPARTMENT

**PLANS FOR PROPOSED
FEDERAL AID PROJECT
COUNTY HIGHWAY 49 (FAS 514)
ALLERTON-SIDELL ROAD
SECTION 08-00162-01-RS
JOB NO.- C-95-315-10
PROJECT NO.- RS-0514(101)**

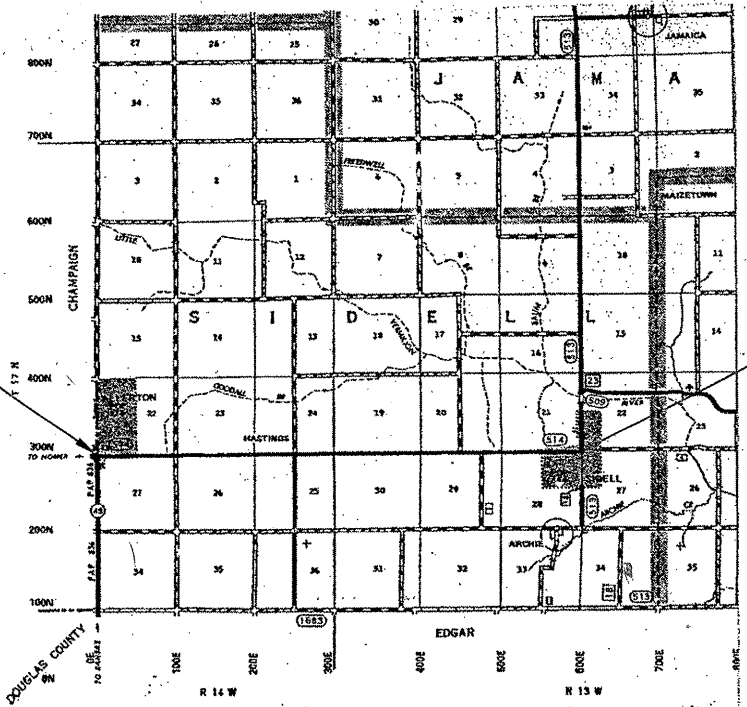


LOCATION OF SECTION INDICATED THUS: —■—

INDEX OF SHEETS

- 1 Cover Sheet
- 2 General Notes and Summary of Quantities
- 3-6 Schedule of Quantities
- 7-11 Existing Typical Cross Section
- 12-18 Proposed Typical Cross Section
- 19-24 Detailed Location Map
- 25-39 Special Details

LOCATION MAP



END PROJECT
STA 805+74.6
(CH 49)

BEGIN PROJECT
STA 482+66.25
(CH 49)

NET LENGTH OF PROJECT: 32308.35 FT = 6.119 MI
Village of Allerton 850 ADT (2008)
Allerton to 250 E 1000 ADT (2008)
250 E to 480 E 900 ADT (2008)
480 E to Chicago St. In Allerton 850 ADT (2008)



Douglas R. Staske
Douglas R. Staske
Illinois Licensed Professional Engineer Number 05509
License Expires 11/30/2011

APPROVED	<i>January 24</i>	,2011
	<i>Doug Staske</i>	COUNTY ENGINEER
PASSED	<i>March 11</i>	,2011
	<i>DJA</i>	DISTRICT 5 ENGINEER OF LOCAL ROADS & STREETS
RELEASED FOR BID BASED ON LIMITED REVIEW	<i>March 10</i>	,2011
	<i>John</i>	DEPUTY DIRECTOR OF HIGHWAYS REGION 3 ENGINEER STATE OF ILLINOIS DEPARTMENT OF TRANSPORTATION

PREPARED BY:
VERMILION COUNTY HIGHWAY DEPARTMENT
ENGINEERING DIVISION JANUARY 24, 2011

IDOT HIGHWAY STANDARDS

- 420001-07 Pavement Joints
- 420701-02 Pavement Fabric
- 442101-07 Class B Patches
- 602301-03 Inlet Type A
- 604036-02 Grate Type A
- 606101-04 Type A Gutter (Inlet, Outlet, Entrance)
- 701001-02 Off Road Operations 2L, 2W, More Than 15' (4.5m) Away
- 701006-03 Off Road Operations 2L, 2W, 15' (4.5m) to 24" (600mm) From Pavement Edge
- 701011-02 Off Road Moving Operations 2L, 2W, Day Only
- 701201-04 Lane Closure 2L, 2W, Day Only For Speeds \geq 45 MPH
- 701201-04 Lane Closure 2L, 2W, Short Time Operations
- 701306-03 Lane Closure 2L, 2W, Slow Moving Operations Day Only, For Speeds \geq 45 MPH
- 701311-03 Lane Closure 2L, 2W, Moving Operations - Day Only
- 701336-06 Lane Closure 2L, 2W, Work Areas in Series, For Speeds \geq 45 MPH
- 701901-01 Traffic Control Devices
- 780001-02 Typical Pavement Markings
- 781001-03 Typical Applications - Raised Reflective Pavement Markers

FUNCTIONAL CLASSIFICATION MAJOR COLLECTOR Contract No. 91459