

F.A.U. RTE.	SECTION	COUNTY	TOTAL SHEETS	SHEET NO.
N/A	10-00121-01-PV	MORGAN	77	1

**CONTRACT NO. 93547**

**STANDARDS**

000001-06	STANDARD SYMBOLS, ABBREVIATIONS AND PATTERNS
280001-05	TEMPORARY EROSION CONTROL SYSTEMS
424001-05	CURB RAMPS FOR SIDEWALKS
442201-03	CLASS C AND D PATCHES
602301-03	INLET, TYPE A
602306-03	INLET, TYPE B
604001-03	FRAME AND LIDS, TYPE 1
604046-02	FRAME AND GRATE, TYPE 10
604051-03	FRAME AND GRATE, TYPE 11
606001-04	CONCRETE CURB, TYPE B, AND COMBINATION CONCRETE CURB AND GUTTER
701501-06	URBAN LANE CLOSURE, 2L, 2W, UNDIVIDED
701502-04	URBAN LANE CLOSURE, 2L, 2W, WITH BIDIRECTIONAL LEFT TURN LANE
701801-04	LANE CLOSURE, MULTILANE 1W OR 2W CROSSWALK OR SIDEWALK CLOSURE
701901-01	TRAFFIC CONTROL DEVICES
720001-01	SIGN PANEL MOUNTING DETAILS
720006-02	SIGN PANEL ERECTIONS DETAILS
728001-01	TELESCOPING STEEL SIGN SUPPORT
780001-02	TYPICAL PAVEMENT MARKINGS

**STATE OF ILLINOIS**  
**DEPARTMENT OF TRANSPORTATION**  
**PLANS FOR PROPOSED**  
**SURFACE TRANSPORTATION / URBAN PROGRAM WITH ITEP**  
**CITY OF JACKSONVILLE**  
**MORGAN COUNTY**  
**SECTION 10-00121-01-PV**  
**PROJECT NO. M-TE-00D6(100)**  
**SOUTH MAIN STREET (FAU 8190)/**  
**COLLEGE AVENUE (FAU 8173) RESURFACING & STREETScape**  
**JOB NO. C-96-210-11**

**INDEX OF SHEETS**

1	COVER SHEET & REQUIRED STANDARDS
2	GENERAL NOTES AND LEGEND
3-7	SUMMARY OF QUANTITIES
8-10	TYPICAL SECTIONS
11-16	SCHEDULE OF QUANTITIES
17	ALIGNMENT, TIES AND BENCHMARKS
18-20	REMOVAL PLANS
21-23	PLAN & PROFILE SHEETS
24-26	EROSION CONTROL PLANS
27-28	DRAINAGE PLAN AND PROFILE SHEETS
29-33	WATER MAIN PLAN AND PROFILE SHEETS
34-41	ELECTRICAL PLAN AND DETAIL SHEETS
42-43	INTERSECTION SHEETS
44-55	LANDSCAPING AND STREETScape PLAN AND DETAIL SHEETS
56-59	SIGNING AND STRIPING PLAN
60-61	SPECIAL DETAILS
62	PARKING LOT DETAIL
63-77	CROSS SECTION SHEETS

**GAS & ELECTRIC**  
AMEREN CIPS  
700 JERSEY ST  
QUINCY, ILLINOIS

**CABLE T.V.**  
MEDIACOM CABLE  
409 MASSEY LANE  
JACKSONVILLE, ILLINOIS

**TELEPHONE**  
FRONTIER COMMUNICATIONS  
300 WEST BEECHER  
JACKSONVILLE, ILLINOIS

**WATER & SEWER**  
CITY OF JACKSONVILLE  
MUNICIPAL BUILDING  
200 WEST DOUGLAS  
JACKSONVILLE, ILLINOIS

COLLEGE AVENUE  
LIMIT OF IMPROVEMENTS  
BEGINS STA 122+34.24

SOUTH MAIN STREET  
SECTION 10-00121-01-PV  
BEGINS STA 102+02.58

SOUTH MAIN STREET  
SECTION 10-00121-01-PV  
ENDS STA 111+16.00

COLLEGE AVENUE  
LIMIT OF IMPROVEMENTS  
ENDS STA 127+65.79

**DESCRIPTION OF WORK**

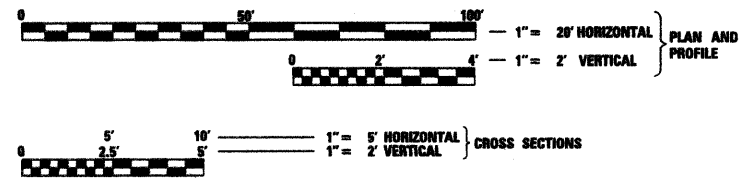
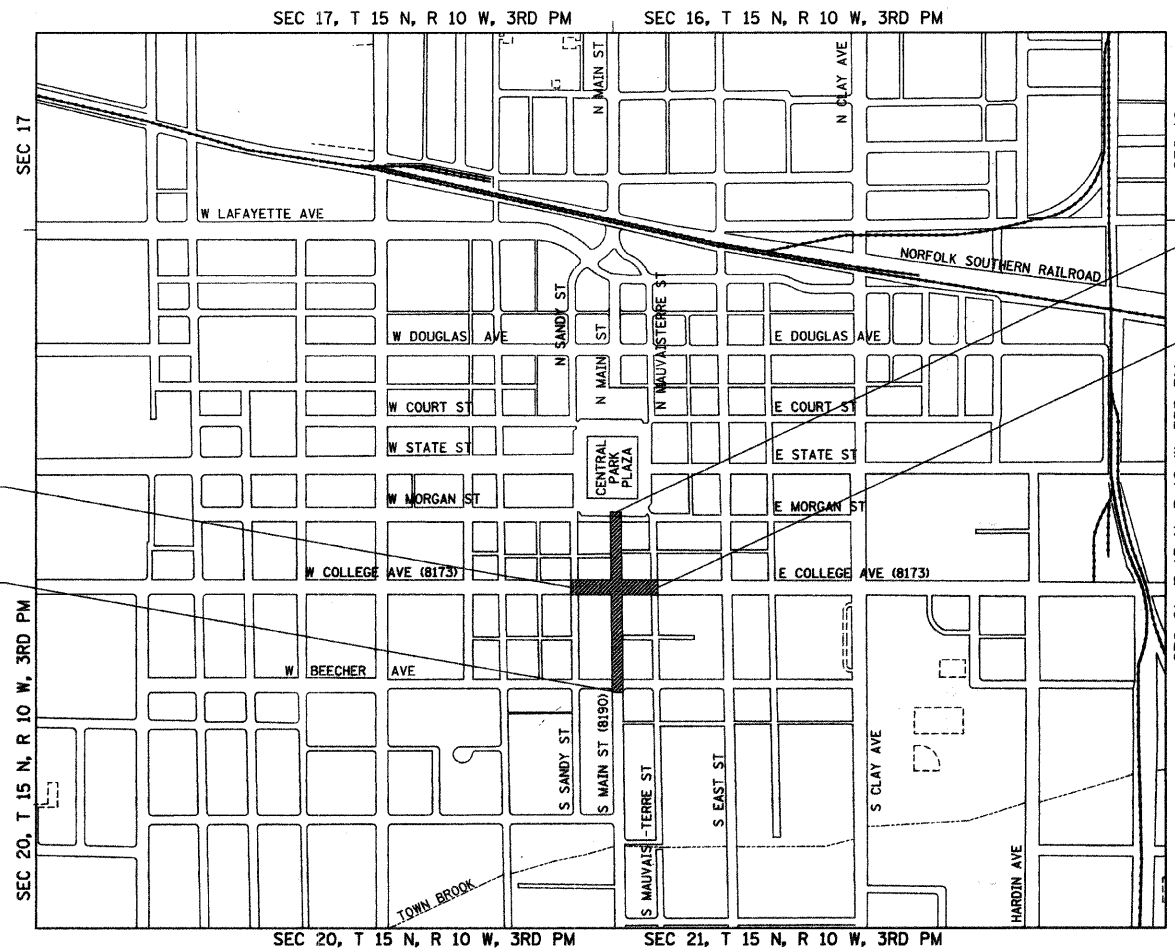
THIS PROJECT CONSISTS OF RESURFACING SOUTH MAIN STREET AND COLLEGE AVENUE AS WELL AS CONSTRUCTION OF THE SOUTH MAIN STREET EXTENSION TO THE DOWNTOWN SQUARE. THE EXISTING HOT-MIX ASPHALT, SIDEWALK AND CURB AND GUTTER WILL BE REMOVED. PROPOSED NEW CONSTRUCTION SECTION WILL CONSIST OF SURFACE WHICH WILL BE 4 1/4" OF HMA SURFACE/BINDER OVER 4 1/2" OF HMA BASE COURSE AND 4" AGGREGATE SUB-BASE. AREAS TO BE RESURFACED ONLY CONSIST OF 1 1/4" HMA SURFACE OVER A VARIABLE THICKNESS OF LEVELING BINDER. B-6.12 COMBINATION CURB AND GUTTER WILL BE PROVIDED THROUGHOUT THE PROJECT. ALSO INCLUDED WILL BE EARTH EXCAVATION, WATER MAIN, PAVEMENT PATCHING, SIDEWALK, DRIVEWAY PAVEMENT, TRAFFIC SIGNALS, LANDSCAPE, LIGHTING AND OTHER RELATED WORK.

APPROVED 3-1-11  
*Andy Engel*  
MAYOR OF CITY OF JACKSONVILLE

PASSED 3-14-2011  
*Jessie Foster*  
DISTRICT SIX ENGINEER OF LOCAL ROADS & STREETS

PASSED 3-14-2011  
*Ron Archambault*  
DISTRICT SIX ENGINEER OF CONSTRUCTION

RELEASING FOR BID  
BASED ON LIMITED  
REVIEW 3-14-2011  
*Roger Dunkel*  
DEPUTY DIRECTOR OF HIGHWAYS, REGION FOUR ENGINEER  
STATE OF ILLINOIS  
DEPARTMENT OF TRANSPORTATION



FULL SIZE PLANS HAVE BEEN PREPARED USING STANDARD ENGINEERING SCALES. REDUCED SIZED PLANS WILL NOT CONFORM TO STANDARD SCALES. IN MAKING MEASUREMENTS ON REDUCED PLANS, THE ABOVE SCALES MAY BE USED.

**J.U.L.I.E.**  
**JOINT UTILITY LOCATION INFORMATION FOR EXCAVATION**  
1-800-892-0123 OR 811

**DESIGN DESIGNATION**

**URBAN COLLECTOR (TWS-2)**  
ADT = 7,930 (2030)  
% PV = 95  
% SU = 4  
% MU = 1

**TOTAL LENGTH OF SOUTH MAIN STREET = 913.42 FEET = 0.173 MILES**  
**NET LENGTH OF COLLEGE AVENUE = 359.15 FEET = 0.068 MILES**  
**NET LENGTH OF PROJECT = 1,272.57 FEET = 0.241 MILES**

**Hutchison Engineering, Inc.**  
SINCE 1946  
1801 West Lafayette  
PO Box 830  
Jacksonville, Illinois 62651  
PHONE : (217)245-7184 FAX (217)245-0468